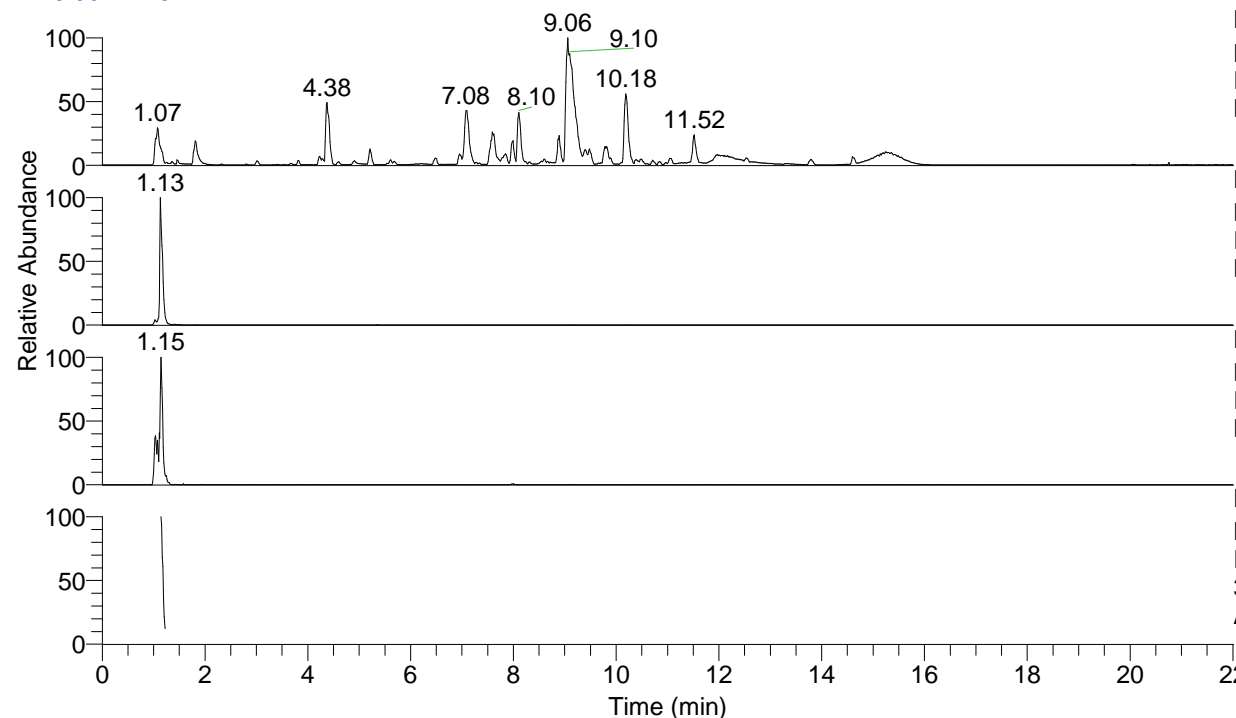


RT: 0.00 - 22.01



NL: 1.54E8
 Base Peak m/z= 100.00000-1500.00000 F:
 FTMS + p ESI Full ms [100.00-1500.00]
 MS Aperta19

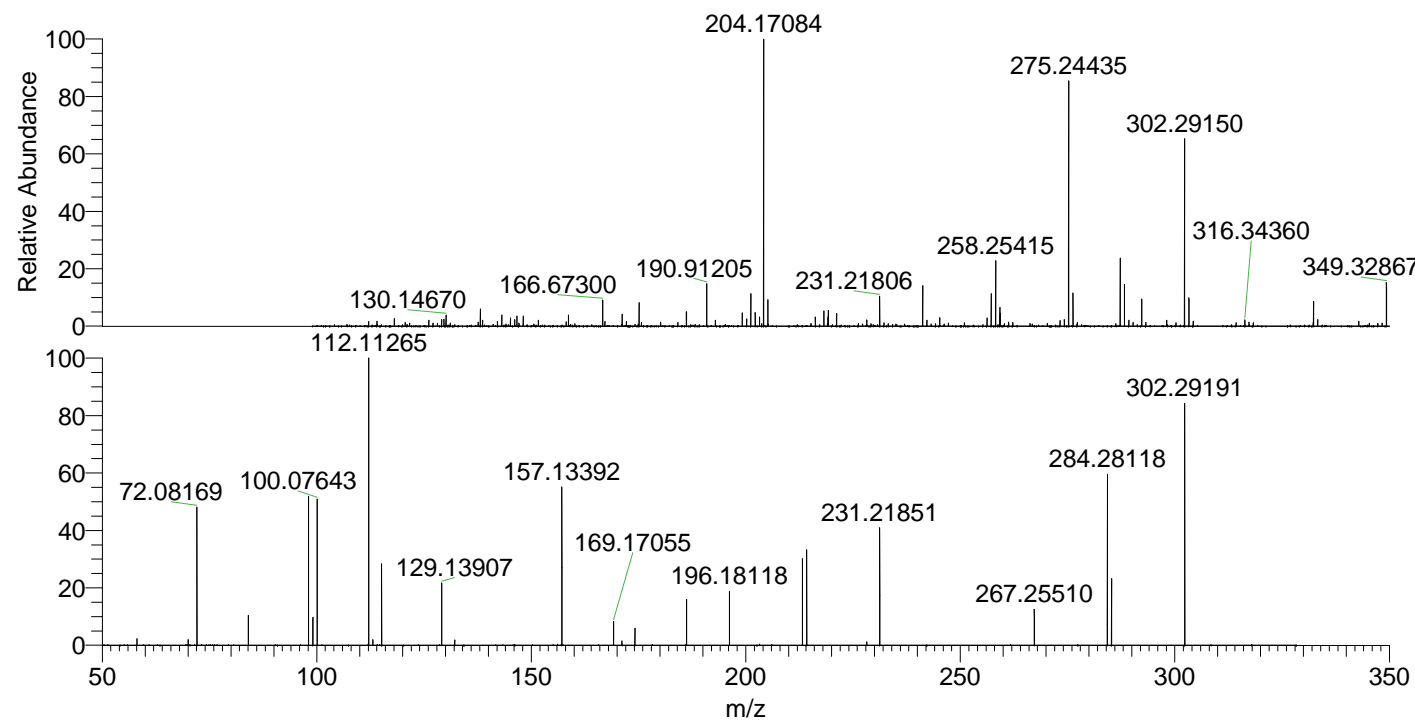
NL: 1.47E7
 Base Peak m/z= 302.29048-302.29350 F:
 FTMS + p ESI Full ms [100.00-1500.00]
 MS Aperta19

NL: 6.81E5
 Base Peak m/z= 151.64915-151.65067 F:
 FTMS + p ESI Full ms [100.00-1500.00]
 MS Aperta19

NL: 9.35E5
 Base Peak m/z= 50.00000-1500.00000 F:
 FTMS + p ESI d Full ms2
 302.29@hcd35.00 [50.00-325.00] MS
 Aperta19

Aperta19#466-495 RT: 1.14-1.21 AV: 6
 F: FTMS + p ESI d Full ms2 302.29 ...
 m/z= 50.00000-1000.00000

m/z	Intensity	Relative
58.06613	12457.0	2.27
70.06611	10722.7	1.95
72.08169	264442.3	48.18
84.08164	57628.9	10.50
98.09716	282973.2	51.56
99.09250	53545.7	9.76
100.07643	288236.4	52.52
112.11265	548842.1	100.00
113.10797	10539.9	1.92
115.12354	155681.8	28.37
129.10272	5910.3	1.08
129.13907	118521.5	21.59
132.15016	10329.9	1.88
157.13392	300509.7	54.75
169.17055	46459.7	8.47
171.14969	8735.8	1.59
174.16073	33145.8	6.04
186.19680	88412.8	16.11
196.18118	103694.2	18.89
213.20798	170617.0	31.09
214.19183	188859.5	34.41
228.20776	6561.8	1.20
231.21851	224297.9	40.87
267.25510	69602.4	12.68
284.28118	327428.5	59.66
285.26538	126810.5	23.11
302.29191	470376.9	85.70



NL: 2.20E7
 Aperta19#463 RT: 1.13
 AV: 1 T: FTMS + p ESI
 Full ms [100.00-1500.00]

NL: 5.45E5
 Aperta19#462-496 RT:
 1.14-1.21 AV: 6 F: FTMS
 + p ESI d Full ms2
 302.29@hcd35.00
 [50.00-325.00]