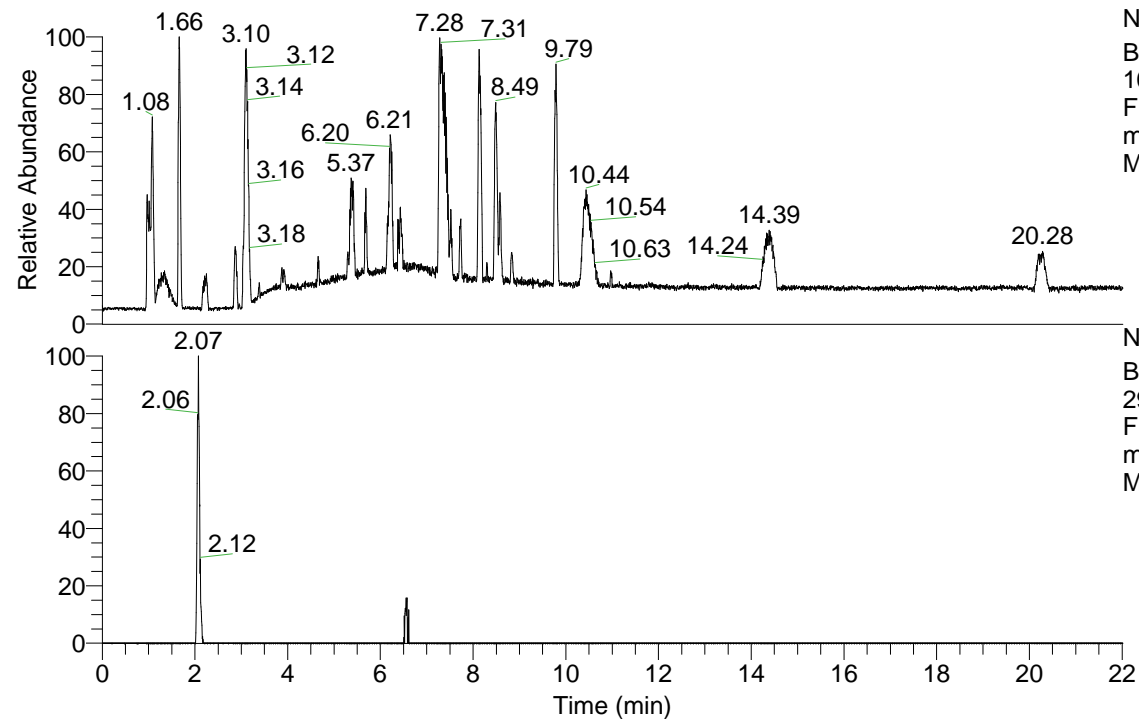


RT: 0.00 - 22.01



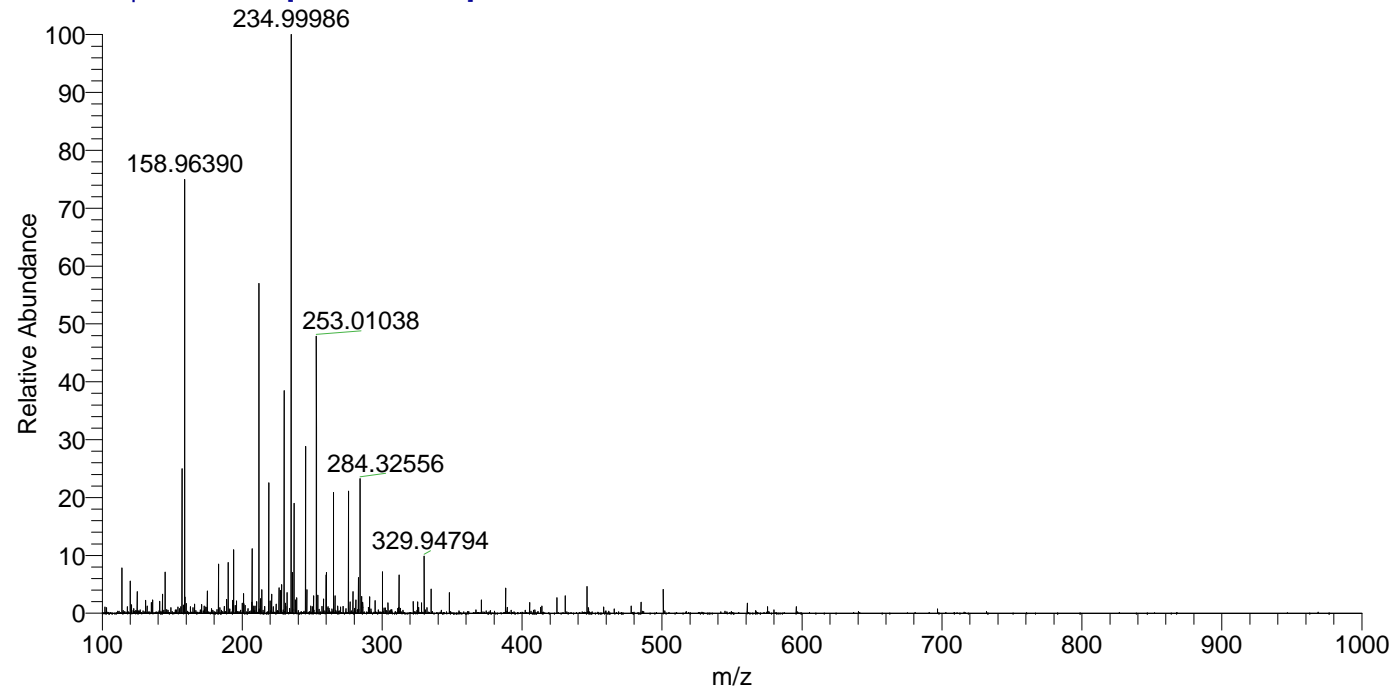
NL: 1.41E8
 Base Peak m/z=
 100.00000-1500.00000
 F: FTMS + p ESI Full
 ms [100.00-1500.00]
 MS Aperta_HDX

Aperta_HDX#333 RT: 2.07
 T: FTMS + p ESI Full ms [100.00-1500.00]
 m/z= 291.00000-292.00000

m/z	Intensity	Relative	Delta (ppm)	Composition
291.14243	208279.0	100.00	-1.57	C ₁₀ H ₇ ² H ₇ O ₅ N ₅
			3.75	C ₁₀ H ₅ ² H ₈ O ₅ N ₅
			-6.89	C ₁₀ H ₉ ² H ₆ O ₅ N ₅
			9.07	C ₁₀ H ₃ ² H ₉ O ₅ N ₅

NL: 2.67E5
 Base Peak m/z=
 291.14197-291.14489
 F: FTMS + p ESI Full
 ms [100.00-1500.00]
 MS Aperta_HDX

Aperta_HDX #333 RT: 2.07 AV: 1 NL: 7.14E6
 T: FTMS + p ESI Full ms [100.00-1500.00]



Aperta_HDX #333 RT: 2.07 AV: 1 NL: 2.04E5
 T: FTMS + p ESI Full ms [100.00-1500.00]

