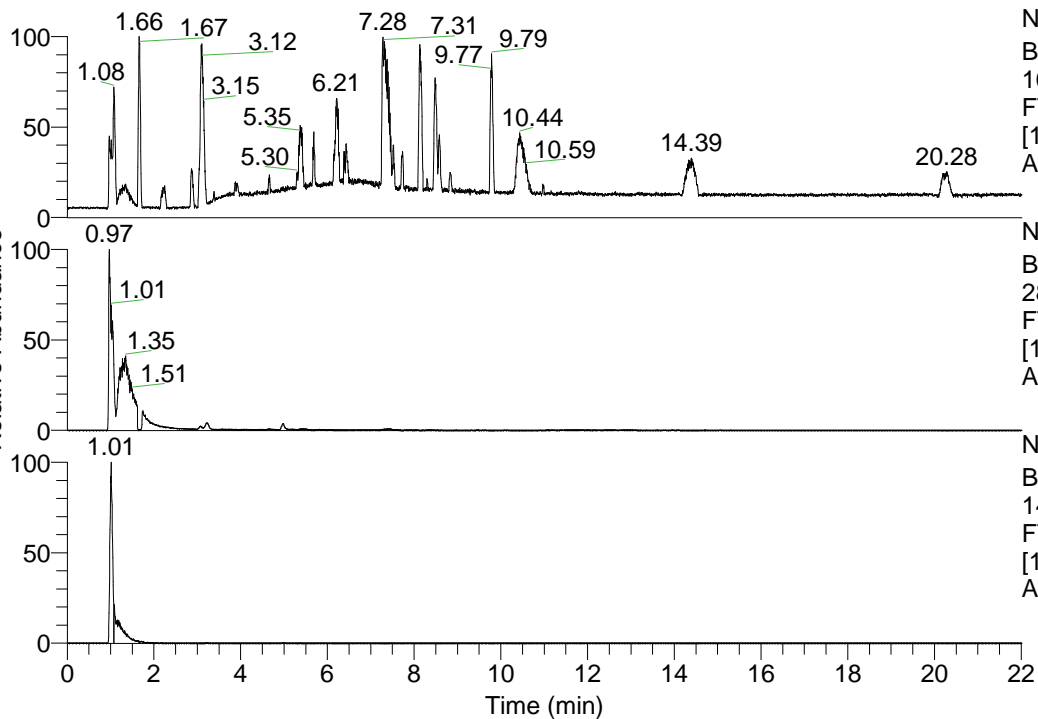


RT: 0.00 - 22.01



NL: 1.41E8
 Base Peak m/z=
 100.00000-1500.00000 F:
 FTMS + p ESI Full ms
 [100.00-1500.00] MS
 Aperta_HDX

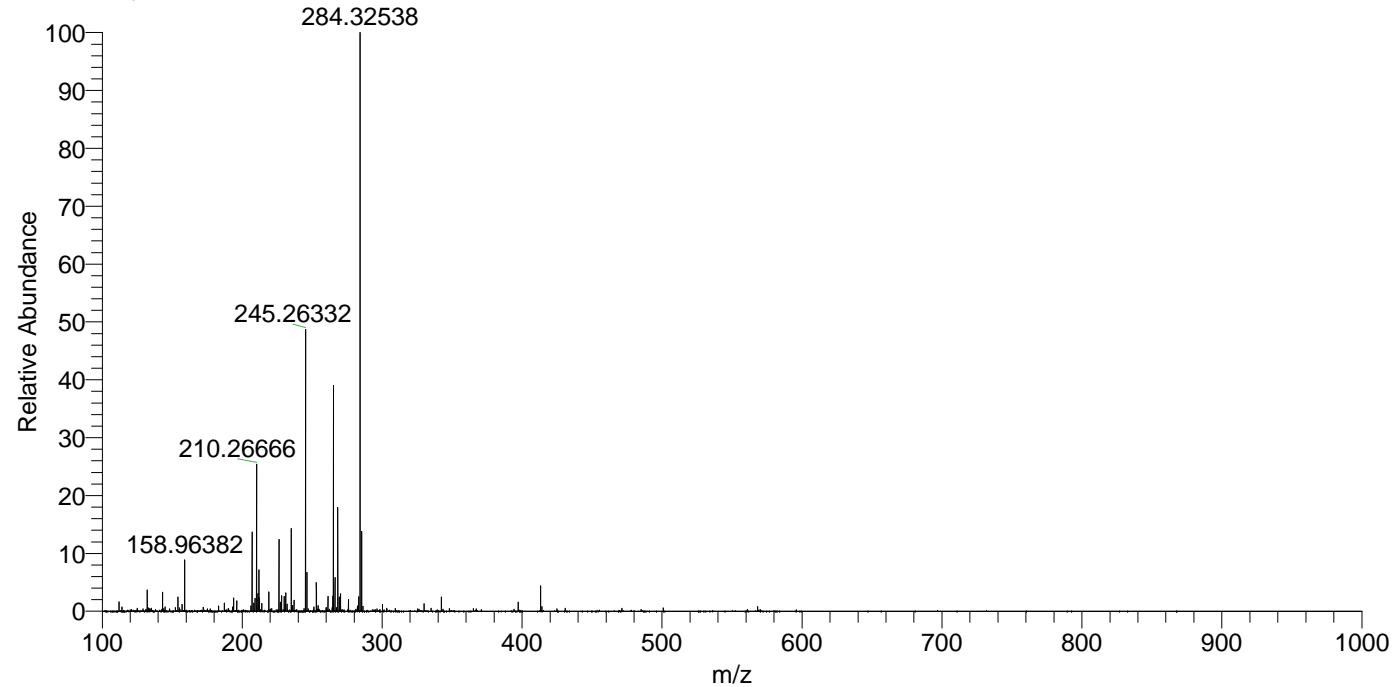
Aperta_HDX#145 RT: 0.97
 T: FTMS + p ESI Full ms [100.00-1500.00]
 m/z= 284.00000-285.00000

m/z	Intensity	Relative	Delta (ppm)	Composition
284.32538	63394208.0	100.00	-2.19	C ₁₃ H ₂₆ ² H ₈ ON ₅
			3.25	C ₁₃ H ₂₄ ² H ₉ ON ₅
			-7.64	C ₁₃ H ₂₈ ² H ₇ ON ₅
			8.70	C ₁₃ H ₂₂ ² H ₁₀ ON ₅

NL: 6.34E7
 Base Peak m/z=
 284.32513-284.32797 F:
 FTMS + p ESI Full ms
 [100.00-1500.00] MS
 Aperta_HDX

NL: 7.93E6
 Base Peak m/z=
 143.16961-143.17105 F:
 FTMS + p ESI Full ms
 [100.00-1500.00] MS
 Aperta_HDX

Aperta_HDX #145 RT: 0.97 AV: 1 NL: 6.31E7
 T: FTMS + p ESI Full ms [100.00-1500.00]



Aperta_HDX #145 RT: 0.97 AV: 1 NL: 6.31E7
 T: FTMS + p ESI Full ms [100.00-1500.00]

