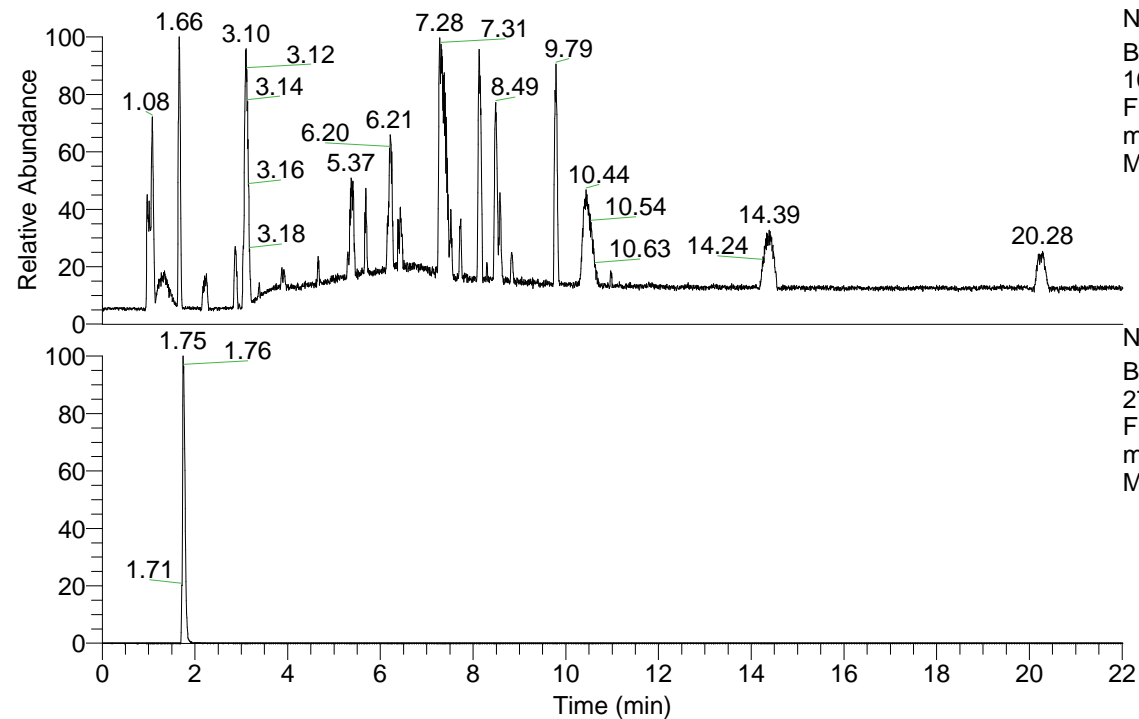


RT: 0.00 - 22.01



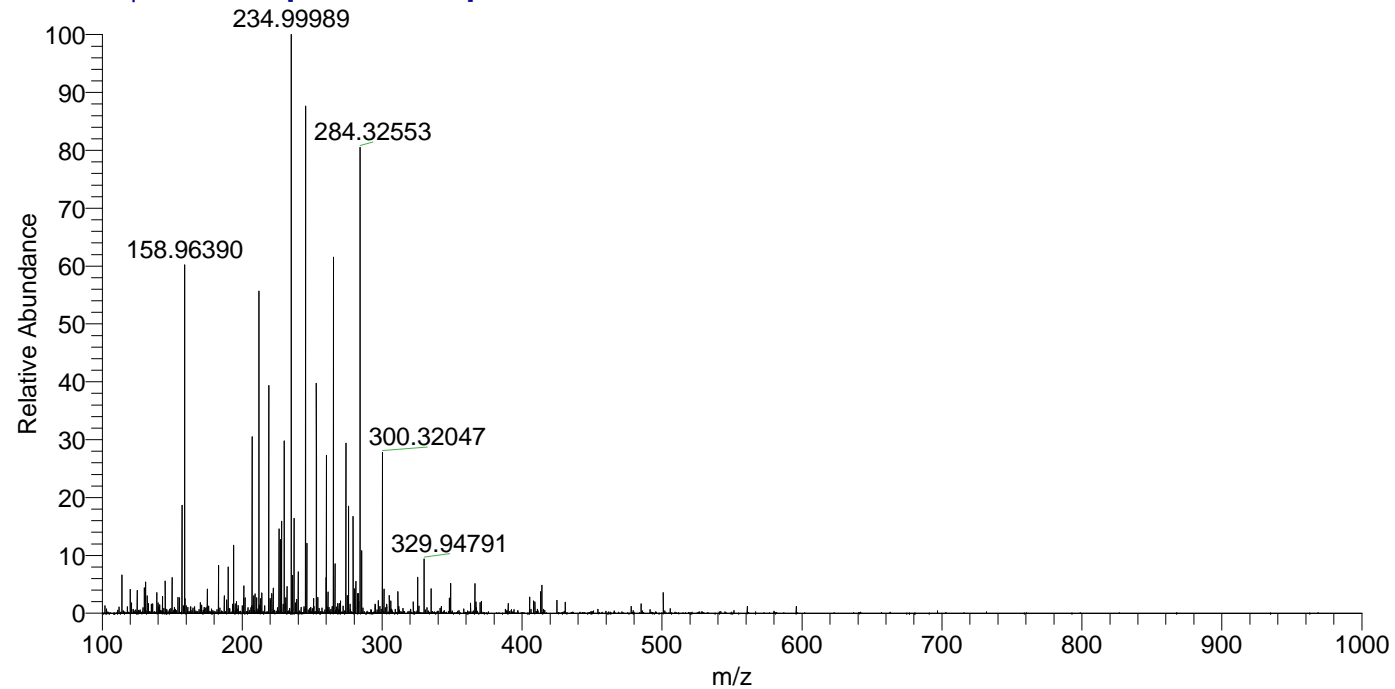
NL: 1.41E8
 Base Peak m/z=
 100.00000-1500.00000
 F: FTMS + p ESI Full
 ms [100.00-1500.00]
 MS Aperta_HDX

Aperta_HDX#283 RT: 1.75
 T: FTMS + p ESI Full ms [100.00-1500.00]
 m/z= 274.00000-275.00000

m/z	Intensity	Relative	Delta (ppm)	Composition
274.14127	2208447.5	100.00	-1.55	C ₁₀ H ₈ ² H ₆ O ₄ N ₅
			4.10	C ₁₀ H ₆ ² H ₇ O ₄ N ₅
			-7.20	C ₁₀ H ₁₀ ² H ₅ O ₄ N ₅
			9.75	C ₁₀ H ₄ ² H ₈ O ₄ N ₅

NL: 2.35E6
 Base Peak m/z=
 274.14087-274.14361
 F: FTMS + p ESI Full
 ms [100.00-1500.00]
 MS Aperta_HDX

Aperta_HDX #283 RT: 1.75 AV: 1 NL: 7.48E6
 T: FTMS + p ESI Full ms [100.00-1500.00]



Aperta_HDX #283 RT: 1.75 AV: 1 NL: 2.20E6
 T: FTMS + p ESI Full ms [100.00-1500.00]

