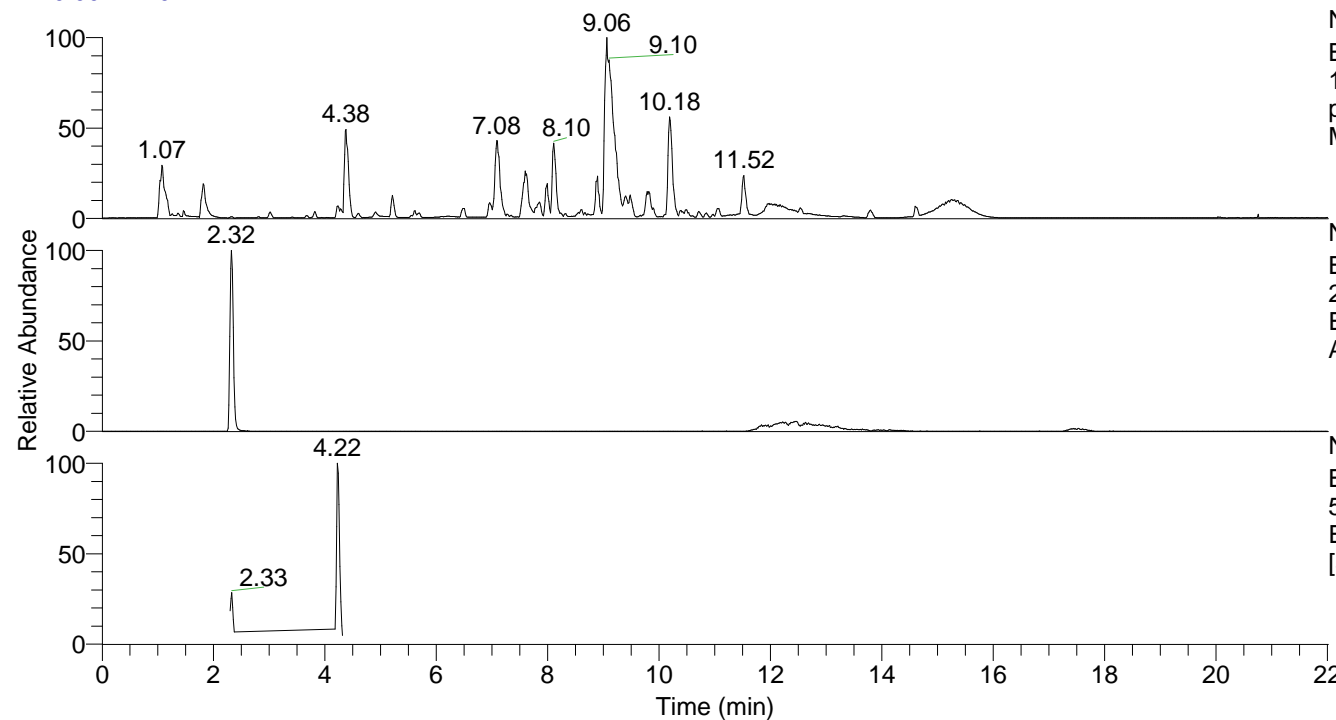


RT: 0.00 - 22.01



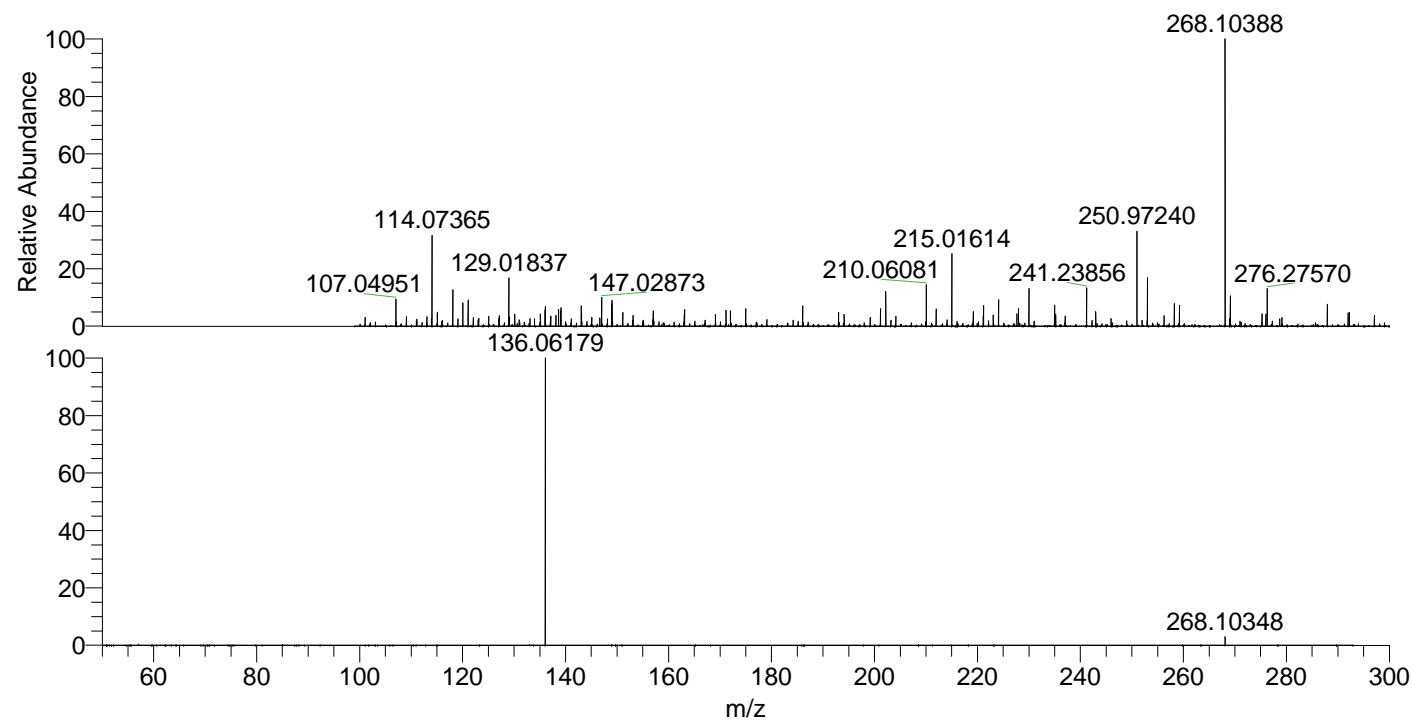
NL: 1.54E8
 Base Peak m/z=
 100.00000-1500.00000 F: FTMS +
 p ESI Full ms [100.00-1500.00]
 MS Aperta19

NL: 1.61E6
 Base Peak m/z=
 268.10323-268.10591 F: FTMS + p
 ESI Full ms [100.00-1500.00] MS
 Aperta19

NL: 3.65E6
 Base Peak m/z=
 50.00000-1500.00000 F: FTMS + p
 ESI d Full ms2 268.10@hcd35.00
 [50.00-290.00] MS Aperta19

Aperta19#940-968 RT: 2.30-2.37 AV: 6
 F: FTMS + p ESI d Full ms2 268.10 ...
 m/z= 50.00000-1000.00000

m/z	Intensity	Relative
136.06179	638100.8	100.00
268.10348	18485.5	2.90



NL: 1.58E6
 Aperta19#949 RT: 2.32
 AV: 1 T: FTMS + p ESI
 Full lock ms
 [100.00-1500.00]

NL: 6.22E5
 Aperta19#938-968 RT:
 2.30-2.37 AV: 6 F: FTMS
 + p ESI d Full ms2
 268.10@hcd35.00
 [50.00-290.00]