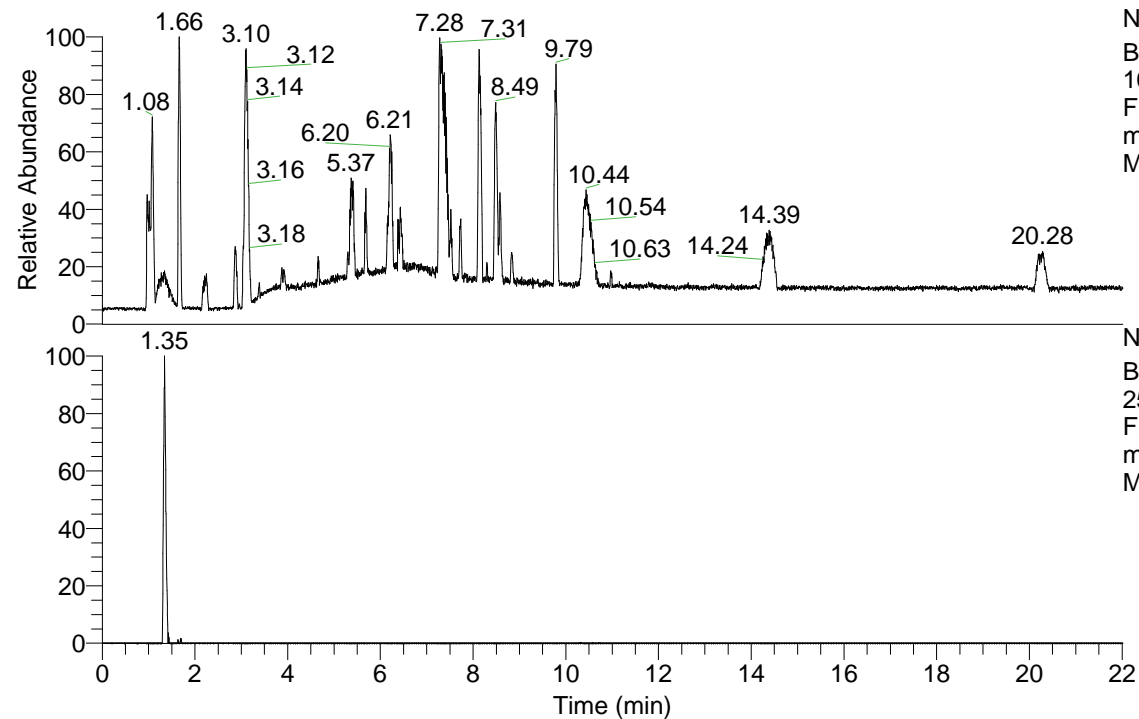


RT: 0.00 - 22.01



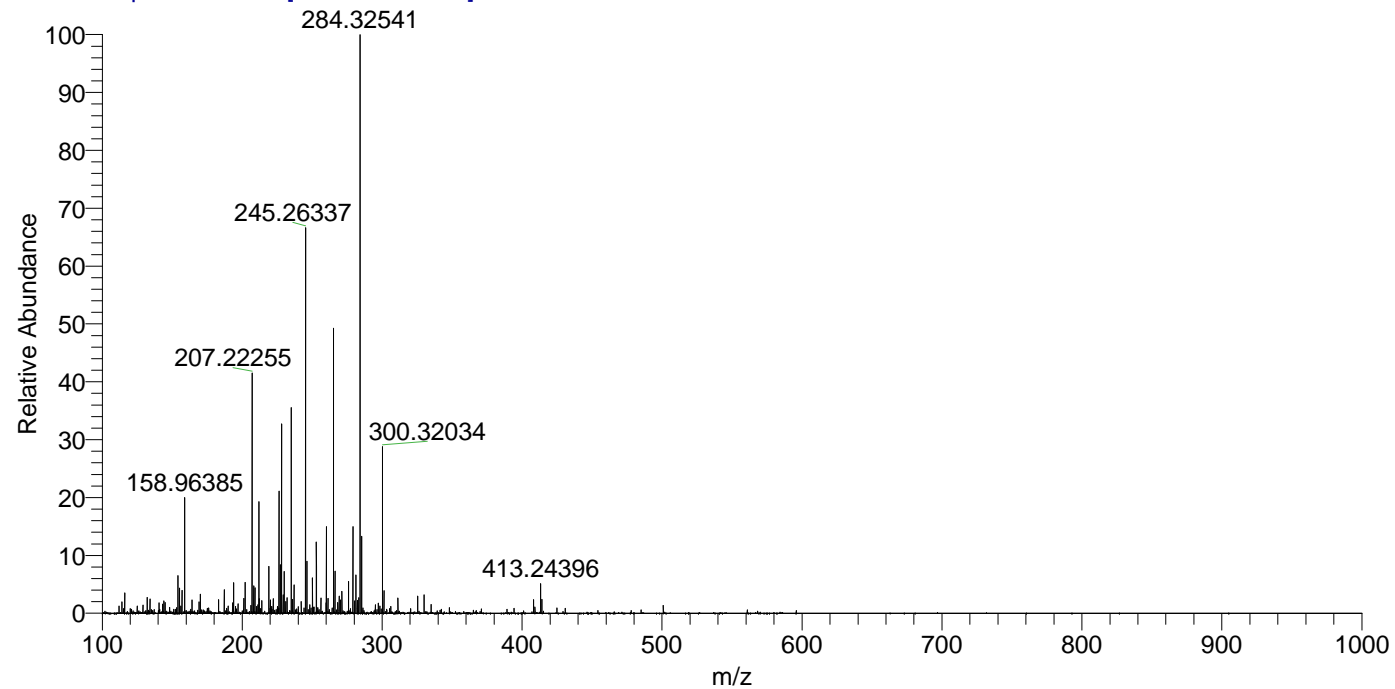
NL: 1.41E8
 Base Peak m/z=
 100.00000-1500.00000
 F: FTMS + p ESI Full
 ms [100.00-1500.00]
 MS Aperta_HDX

Aperta_HDX#214 RT: 1.35
 T: FTMS + p ESI Full ms [100.00-1500.00]
 m/z= 250.00000-251.00000

m/z	Intensity	Relative	Delta (ppm)	Composition
250.13000	1521680.8	100.00	-1.81	C ₉ H ₈ ² H ₆ O ₅ N ₃
			4.38	C ₉ H ₆ ² H ₇ O ₅ N ₃
			-8.00	C ₉ H ₁₀ ² H ₅ O ₅ N ₃

NL: 1.71E6
 Base Peak m/z=
 250.12976-250.13226
 F: FTMS + p ESI Full
 ms [100.00-1500.00]
 MS Aperta_HDX

Aperta_HDX #214 RT: 1.35 AV: 1 NL: 2.45E7
 T: FTMS + p ESI Full ms [100.00-1500.00]



Aperta_HDX #214 RT: 1.35 AV: 1 NL: 1.63E7
 T: FTMS + p ESI Full ms [100.00-1500.00]

