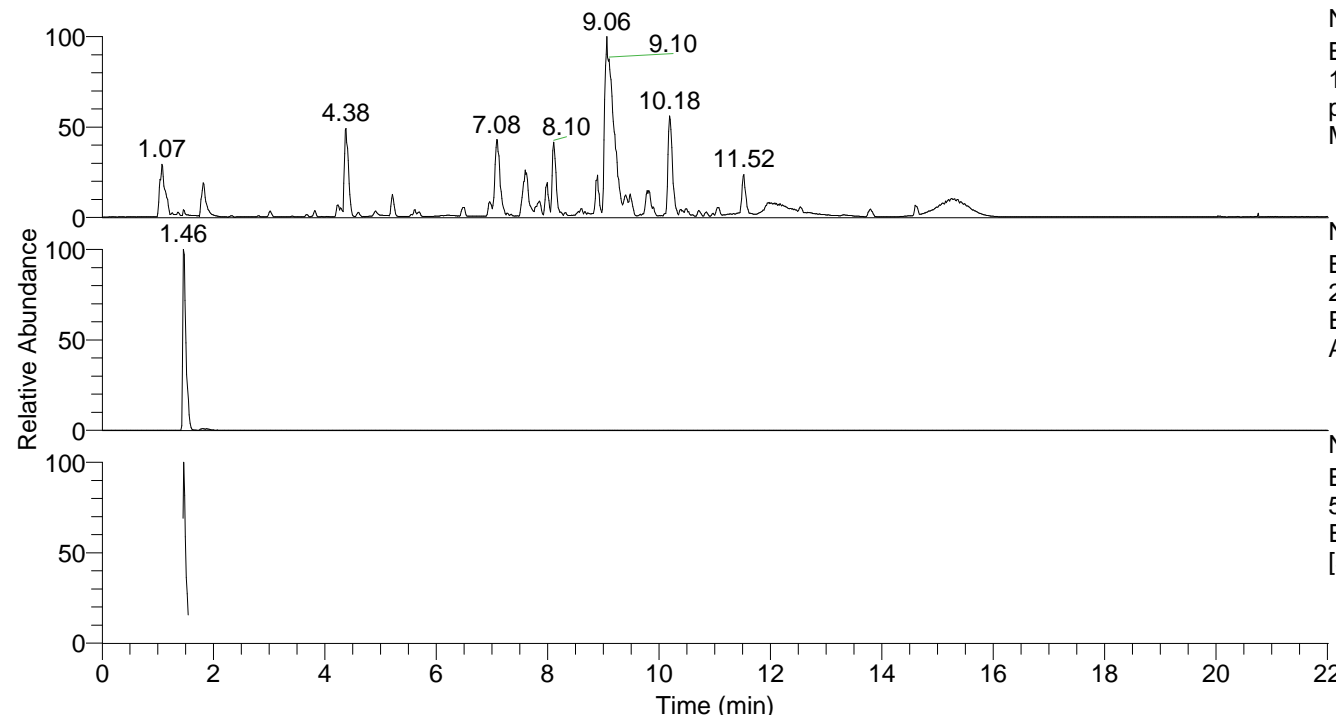


RT: 0.00 - 22.01



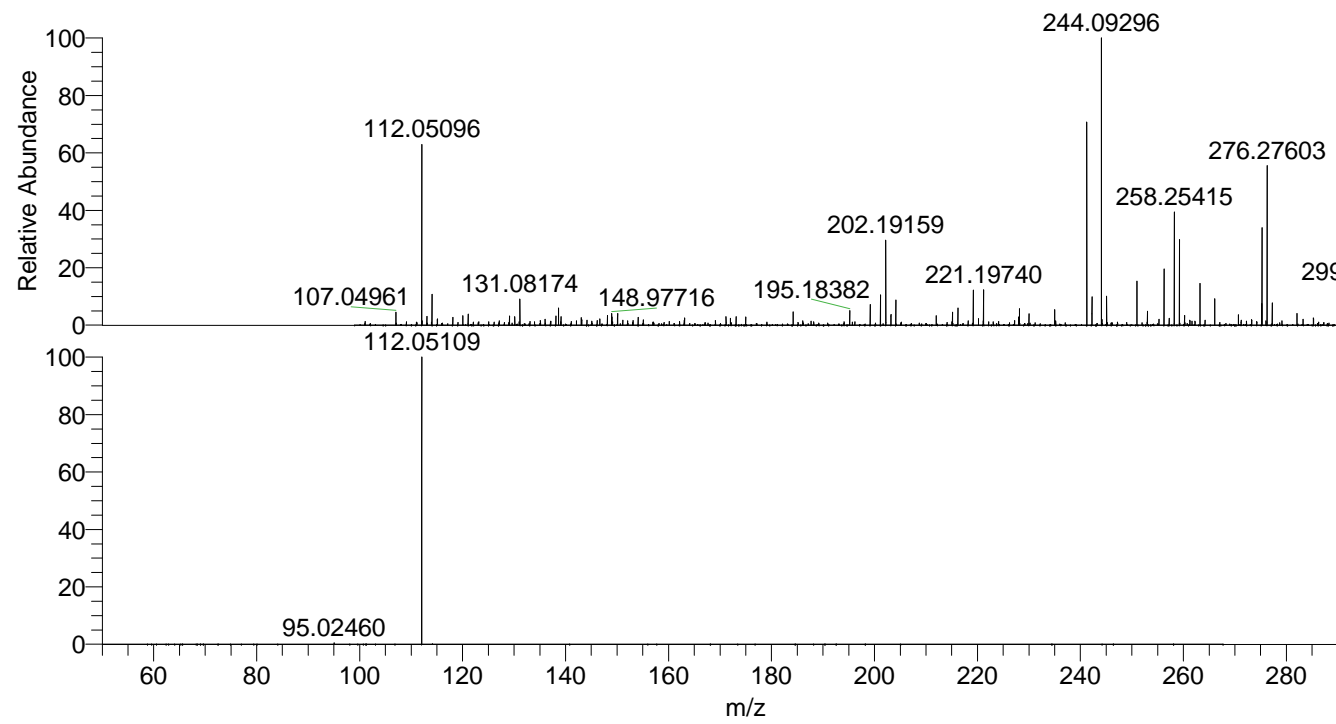
NL: 1.54E8
 Base Peak m/z=
 100.00000-1500.00000 F: FTMS +
 p ESI Full ms [100.00-1500.00]
 MS Aperta19

NL: 3.88E6
 Base Peak m/z=
 244.09213-244.09457 F: FTMS + p
 ESI Full ms [100.00-1500.00] MS
 Aperta19

NL: 3.15E6
 Base Peak m/z=
 50.00000-1500.00000 F: FTMS + p
 ESI d Full ms2 244.09@hcd35.00
 [50.00-265.00] MS Aperta19

Aaperta19#592-615 RT: 1.45-1.51 AV: 5
 F: FTMS + p ESI d Full ms2 244.09@h ...
 m/z= 50.00000-1000.00000

m/z	Intensity	Relative
95.02460	10607.2	0.53
112.05109	2012882.6	100.00



NL: 3.84E6
 Aaperta19#595 RT: 1.46
 AV: 1 T: FTMS + p ESI
 Full lock ms
 [100.00-1500.00]

NL: 1.97E6
 Aaperta19#588-616 RT:
 1.45-1.51 AV: 5 F: FTMS
 + p ESI d Full ms2
 244.09@hcd35.00
 [50.00-265.00]