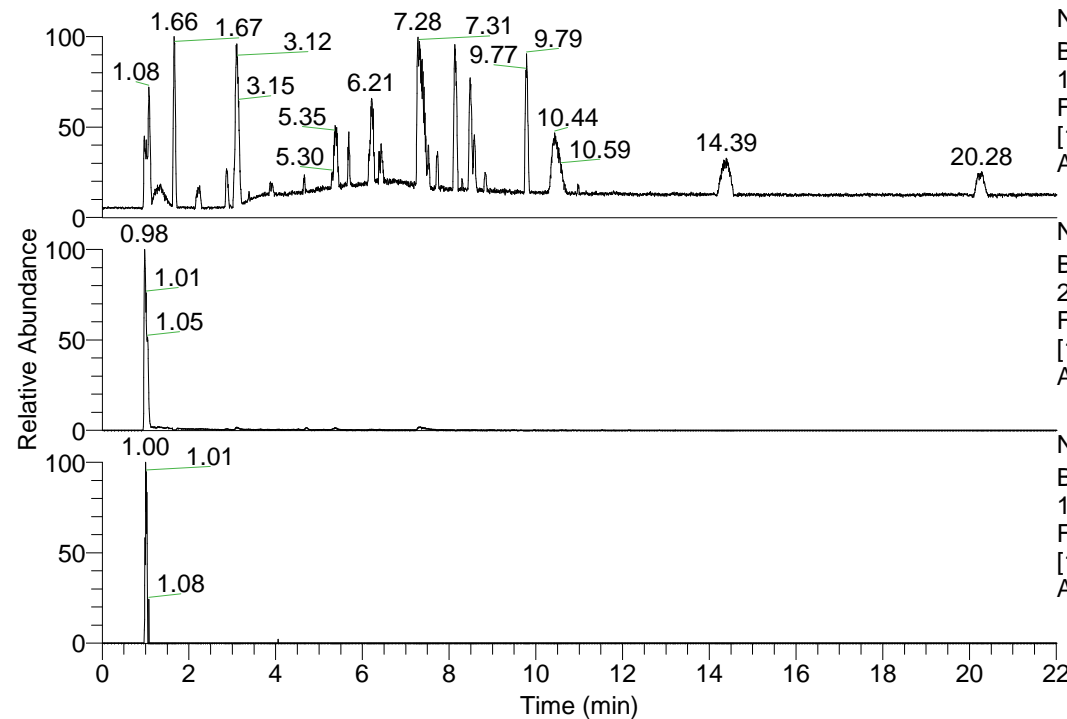


RT: 0.00 - 22.01



NL: 1.41E8
 Base Peak m/z=
 100.00000-1500.00000 F:
 FTMS + p ESI Full ms
 [100.00-1500.00] MS
 Aperta_HDX

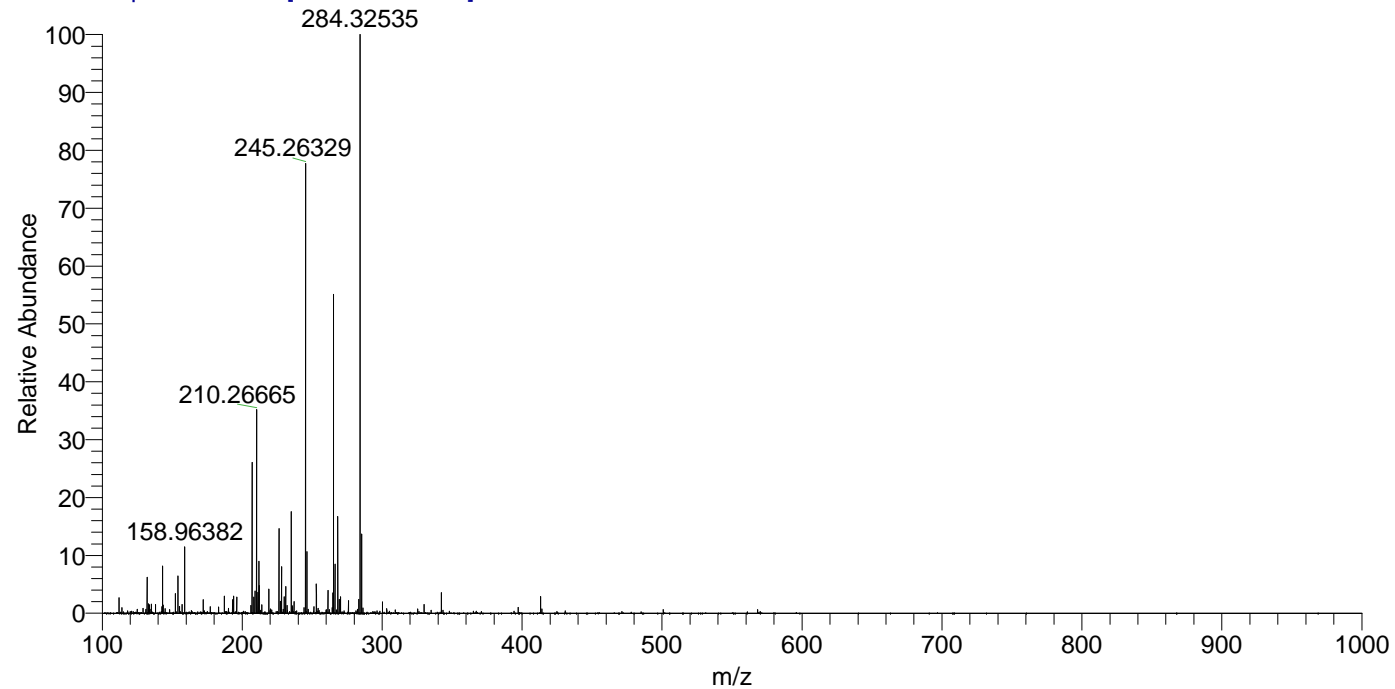
Aperta_HDX#147 RT: 0.98
 T: FTMS + p ESI Full ms [100.00-1500.00]
 m/z= 210.00000-211.00000

m/z	Intensity	Relative	Delta (ppm)	Composition
210.26665	19235862.0	100.00	-1.49	C ₁₀ H ₂₀ ² H ₇ N ₄
			5.87	C ₁₀ H ₁₈ ² H ₈ N ₄
			-8.85	C ₁₀ H ₂₂ ² H ₆ N ₄

NL: 1.92E7
 Base Peak m/z=
 210.26646-210.26856 F:
 FTMS + p ESI Full ms
 [100.00-1500.00] MS
 Aperta_HDX

NL: 1.14E5
 Base Peak m/z=
 106.14028-106.14134 F:
 FTMS + p ESI Full ms
 [100.00-1500.00] MS
 Aperta_HDX

Aperta_HDX #147 RT: 0.98 AV: 1 NL: 5.14E7
 T: FTMS + p ESI Full ms [100.00-1500.00]



Aperta_HDX #147 RT: 0.98 AV: 1 NL: 1.81E7
 T: FTMS + p ESI Full ms [100.00-1500.00]

