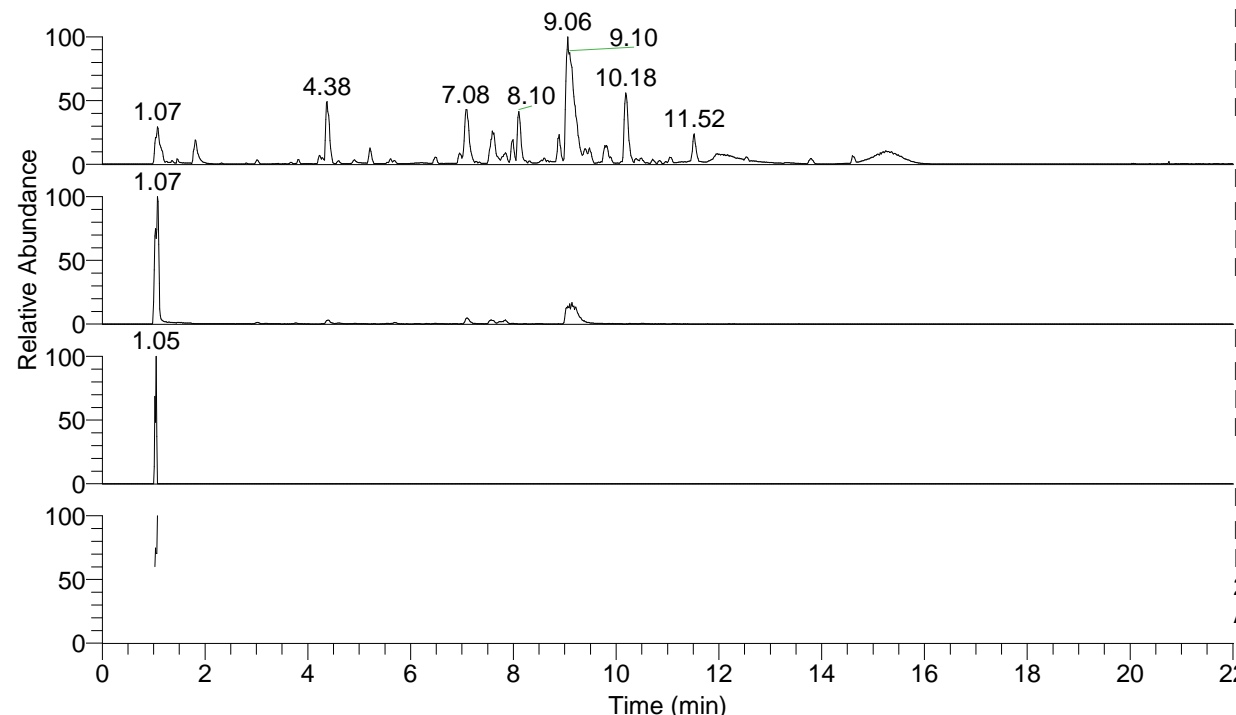


RT: 0.00 - 22.01



NL: 1.54E8
 Base Peak m/z= 100.00000-1500.00000 F:
 FTMS + p ESI Full ms [100.00-1500.00]
 MS Aperta19

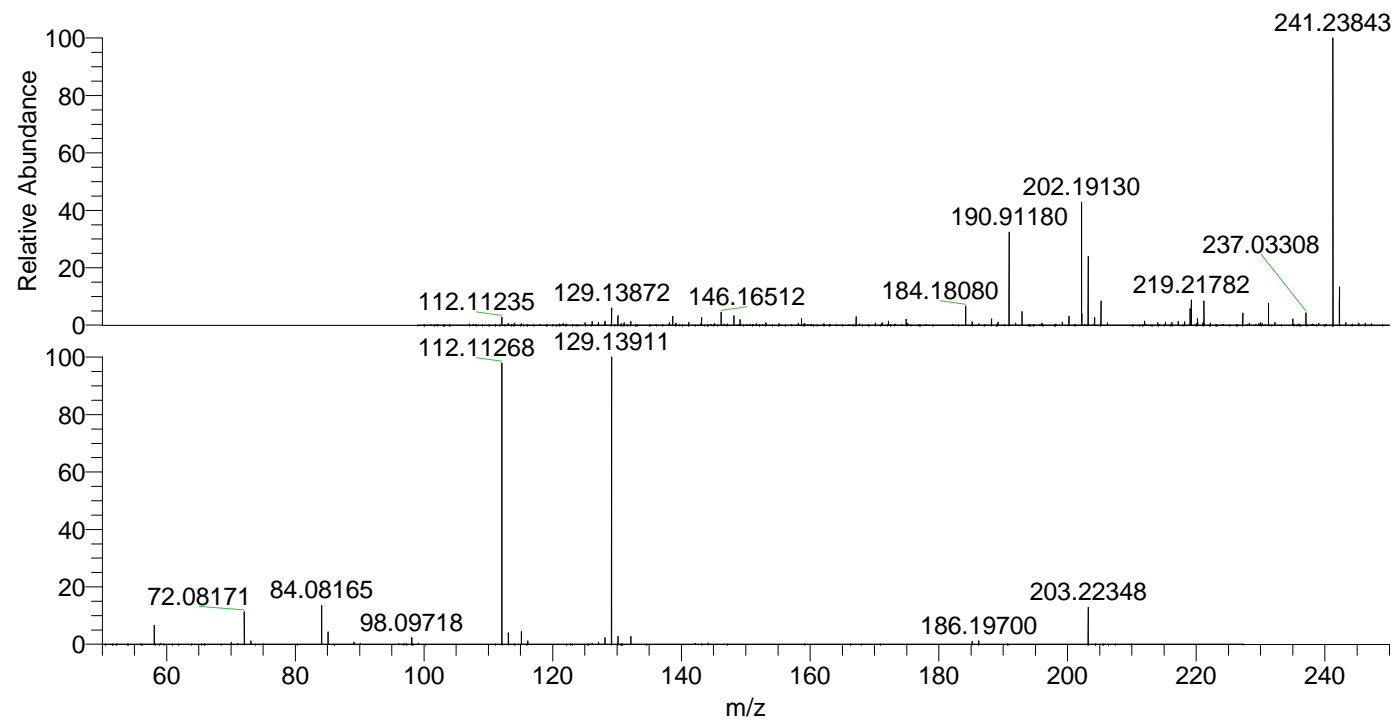
NL: 1.07E7
 Base Peak m/z= 203.22255-203.22459 F:
 FTMS + p ESI Full ms [100.00-1500.00]
 MS Aperta19

NL: 3.09E4
 Base Peak m/z= 102.11519-102.11621 F:
 FTMS + p ESI Full ms [100.00-1500.00]
 MS Aperta19

NL: 3.12E6
 Base Peak m/z= 50.00000-1500.00000 F:
 FTMS + p ESI d Full ms2
 203.22@hcd35.00 [50.00-225.00] MS
 Aperta19

Aaperta19#408-432 RT: 1.02-1.07 AV: 5
 F: FTMS + p ESI d Full ms2 203.22@h ...
 m/z= 50.00000-1000.00000

m/z	Intensity	Relative
58.06614	145401.5	6.64
70.06609	15760.5	0.72
72.08171	249823.2	11.42
73.08500	27597.3	1.26
84.08165	299296.7	13.68
85.08485	95386.8	4.36
89.10811	15673.1	0.72
98.09718	50649.3	2.31
112.11268	2161065.5	98.75
113.11593	86436.7	3.95
115.12349	97487.1	4.45
116.12718	24841.0	1.14
127.13151	15434.8	0.71
128.10751	52461.0	2.40
129.11162	88734.9	4.05
129.13911	2188497.0	100.00
130.14275	61117.1	2.79
132.14993	60907.3	2.78
185.18469	20998.9	0.96
186.19700	25353.8	1.16
203.22348	283232.7	12.94



NL: 4.45E7
 Aaperta19#433 RT: 1.07
 AV: 1 T: FTMS + p ESI
 Full ms [100.00-1500.00]

NL: 2.19E6
 Aaperta19#405-434 RT:
 1.02-1.07 AV: 5 F: FTMS
 + p ESI d Full ms2
 203.22@hcd35.00
 [50.00-225.00]