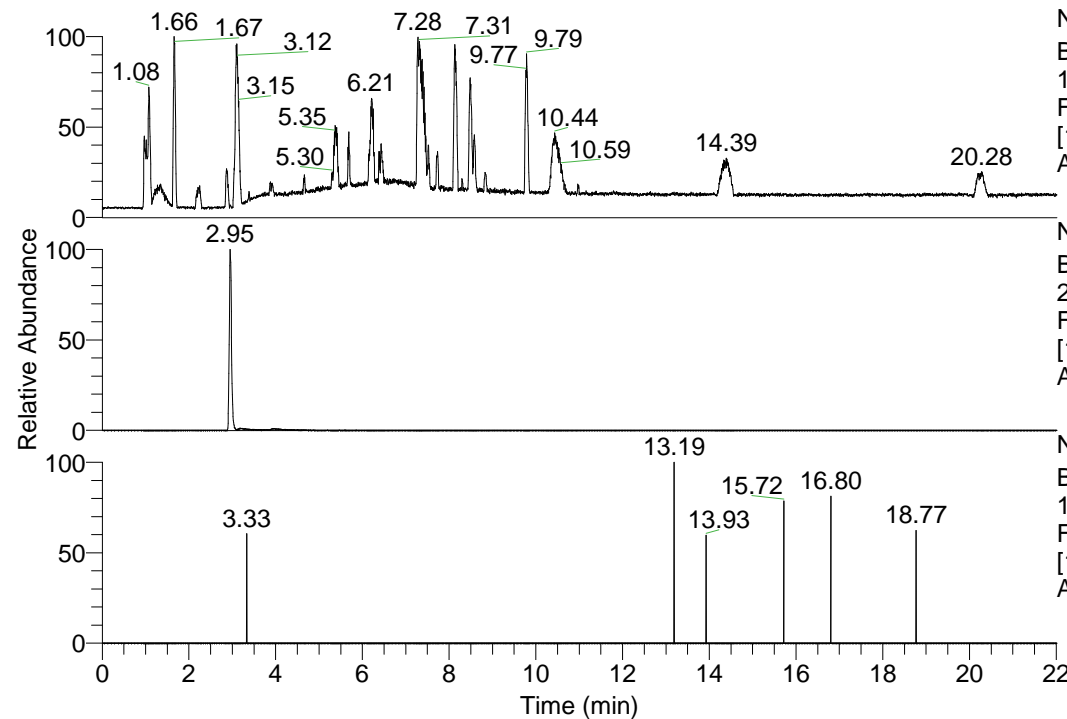


RT: 0.00 - 22.01



NL: 1.41E8
 Base Peak m/z=
 100.00000-1500.00000 F:
 FTMS + p ESI Full ms
 [100.00-1500.00] MS
 Aperta_HDX

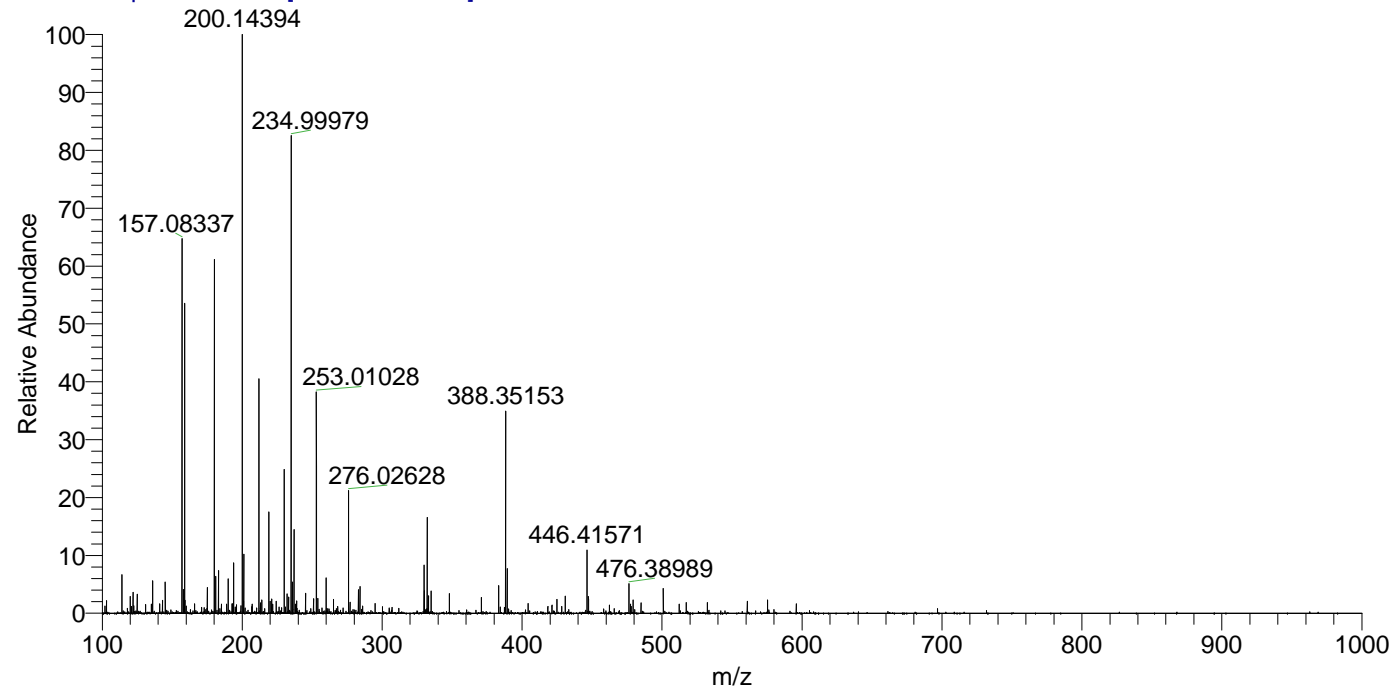
NL: 9.89E6
 Base Peak m/z=
 200.14374-200.14574 F:
 FTMS + p ESI Full ms
 [100.00-1500.00] MS
 Aperta_HDX

NL: 3.54E3
 Base Peak m/z=
 101.07891-101.07993 F:
 FTMS + p ESI Full ms
 [100.00-1500.00] MS
 Aperta_HDX

Aaperta_HDX#473 RT: 2.95
 T: FTMS + p ESI Full ms [100.00-1500.00]
 m/z= 200.00000-201.00000

m/z	Intensity	Relative	Delta (ppm)	Composition
200.14394	9889741.0	100.00	-1.26	C ₁₀ H ₁₀ ² H ₅ O ₂ N ₂
			6.48	C ₁₀ H ₈ ² H ₆ O ₂ N ₂
			-8.99	C ₁₀ H ₁₂ ² H ₄ O ₂ N ₂

Aaperta_HDX #473 RT: 2.95 AV: 1 NL: 9.87E6
 T: FTMS + p ESI Full ms [100.00-1500.00]



Aaperta_HDX #473 RT: 2.95 AV: 1 NL: 9.87E6
 T: FTMS + p ESI Full ms [100.00-1500.00]

