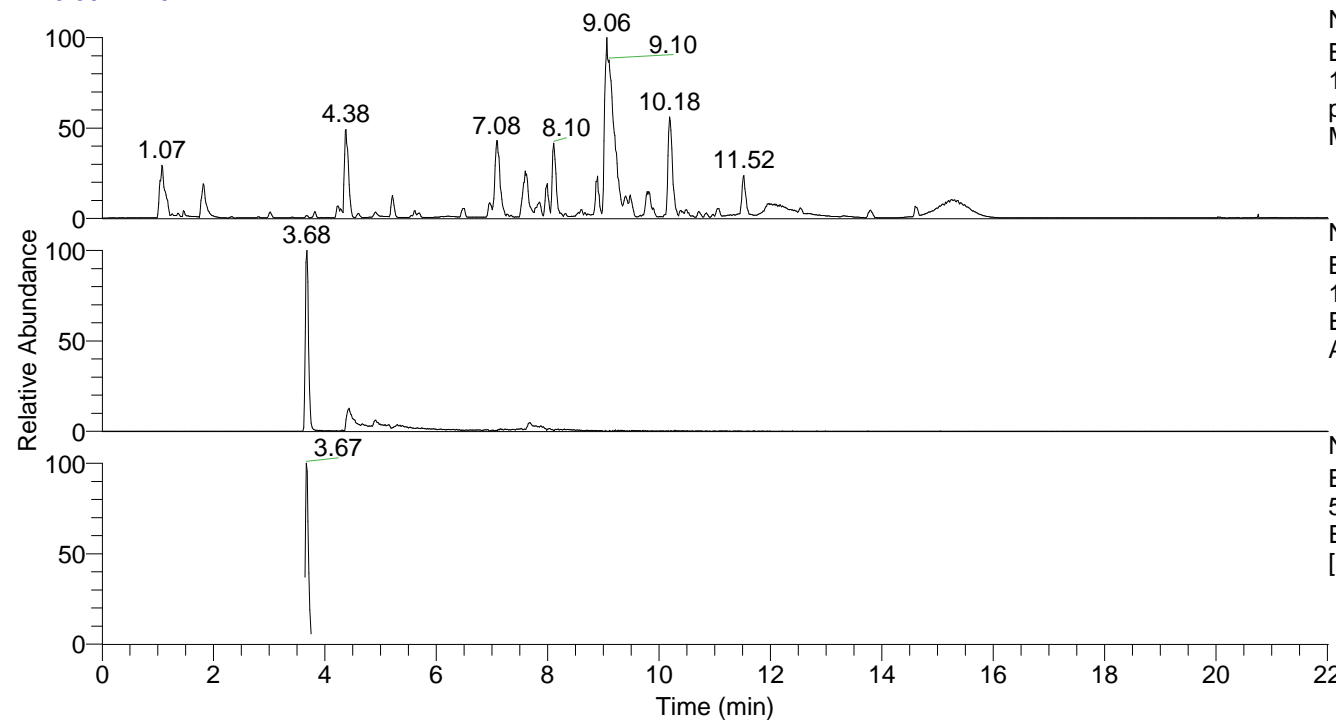


RT: 0.00 - 22.01



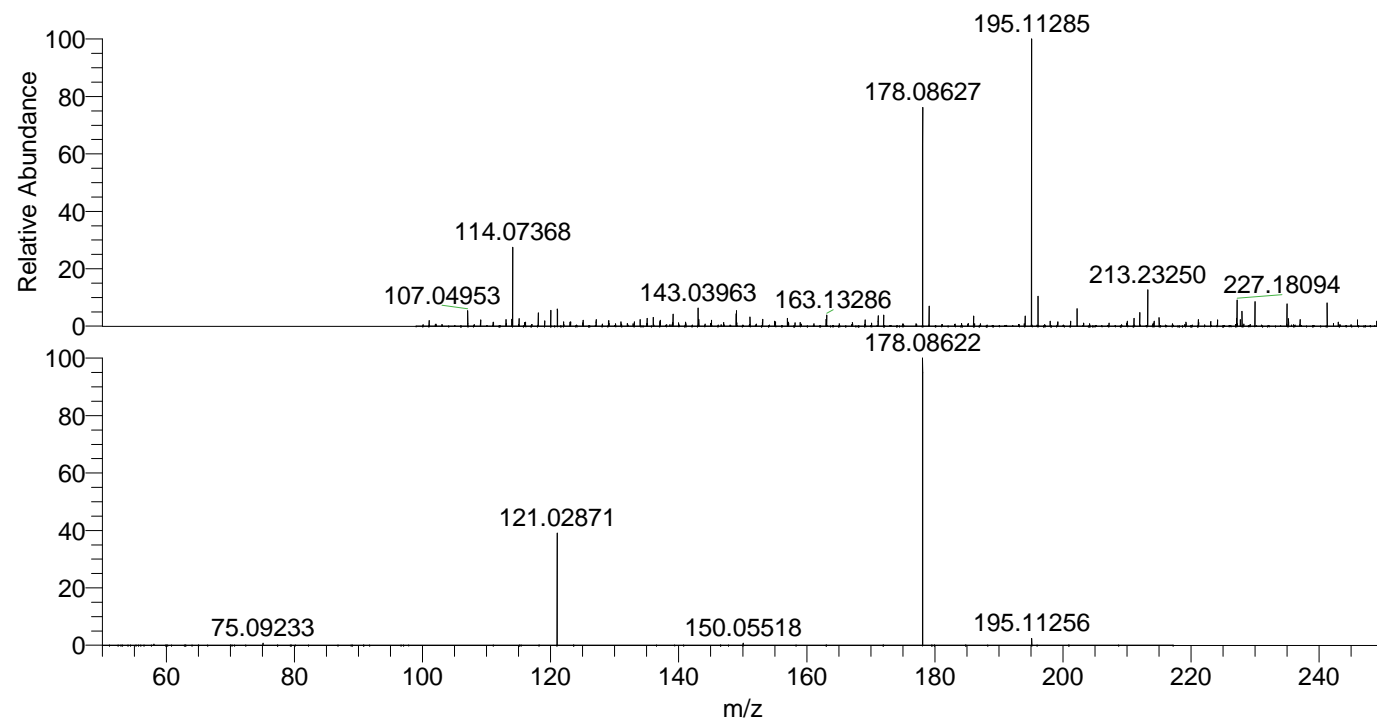
NL: 1.54E8
 Base Peak m/z=
 100.00000-1500.00000 F: FTMS +
 p ESI Full ms [100.00-1500.00]
 MS Aperta19

Aperta19#1474-1508 RT: 3.64-3.73 AV: 7
 F: FTMS + p ESI d Full ms2 195.11@h ...
 m/z= 50.00000-1000.00000

m/z	Intensity	Relative
75.09233	7891.8	0.75
121.02871	404953.1	38.45
150.05518	7565.5	0.72
178.08622	1053290.0	100.00
195.11256	24746.2	2.35

NL: 2.51E6
 Base Peak m/z=
 195.11237-195.11433 F: FTMS + p
 ESI Full ms [100.00-1500.00] MS
 Aperta19

NL: 1.82E6
 Base Peak m/z=
 50.00000-1500.00000 F: FTMS + p
 ESI d Full ms2 195.11@hcd35.00
 [50.00-215.00] MS Aperta19



NL: 2.44E6
 Aperta19#1489 RT: 3.68
 AV: 1 T: FTMS + p ESI
 Full lock ms
 [100.00-1500.00]

NL: 1.03E6
 Aperta19#1471-1509
 RT: 3.64-3.73 AV: 7 F:
 FTMS + p ESI d Full ms2
 195.11@hcd35.00
 [50.00-215.00]