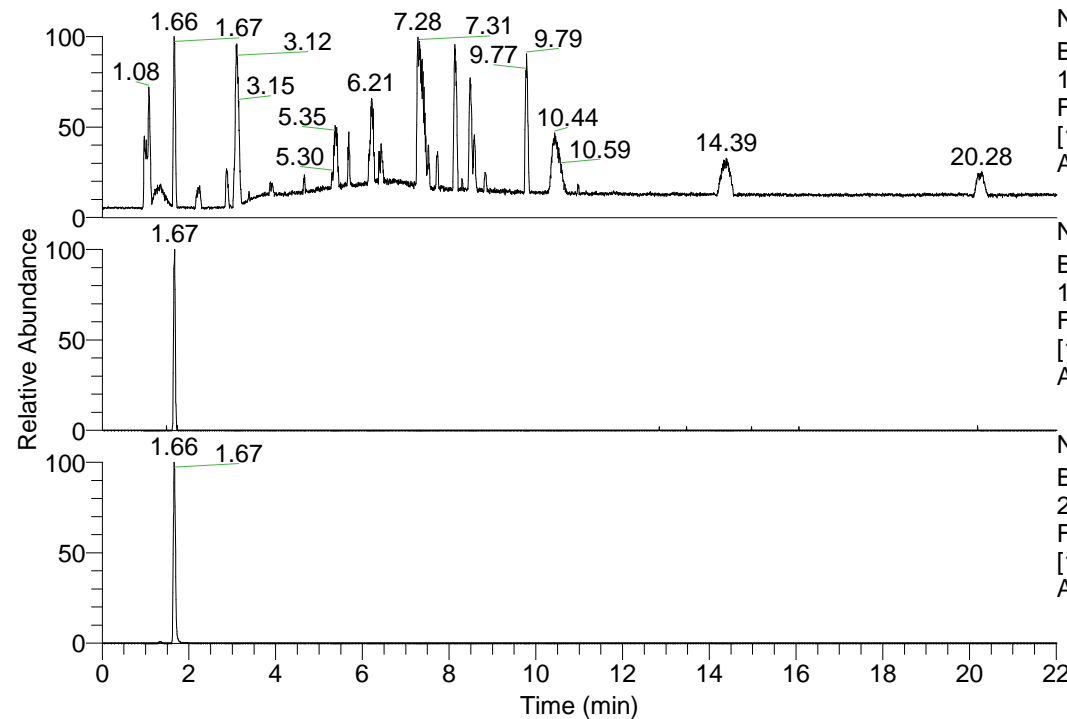


RT: 0.00 - 22.01



NL: 1.41E8
 Base Peak m/z=
 100.00000-1500.00000 F:
 FTMS + p ESI Full ms
 [100.00-1500.00] MS
 Aperta_HDX

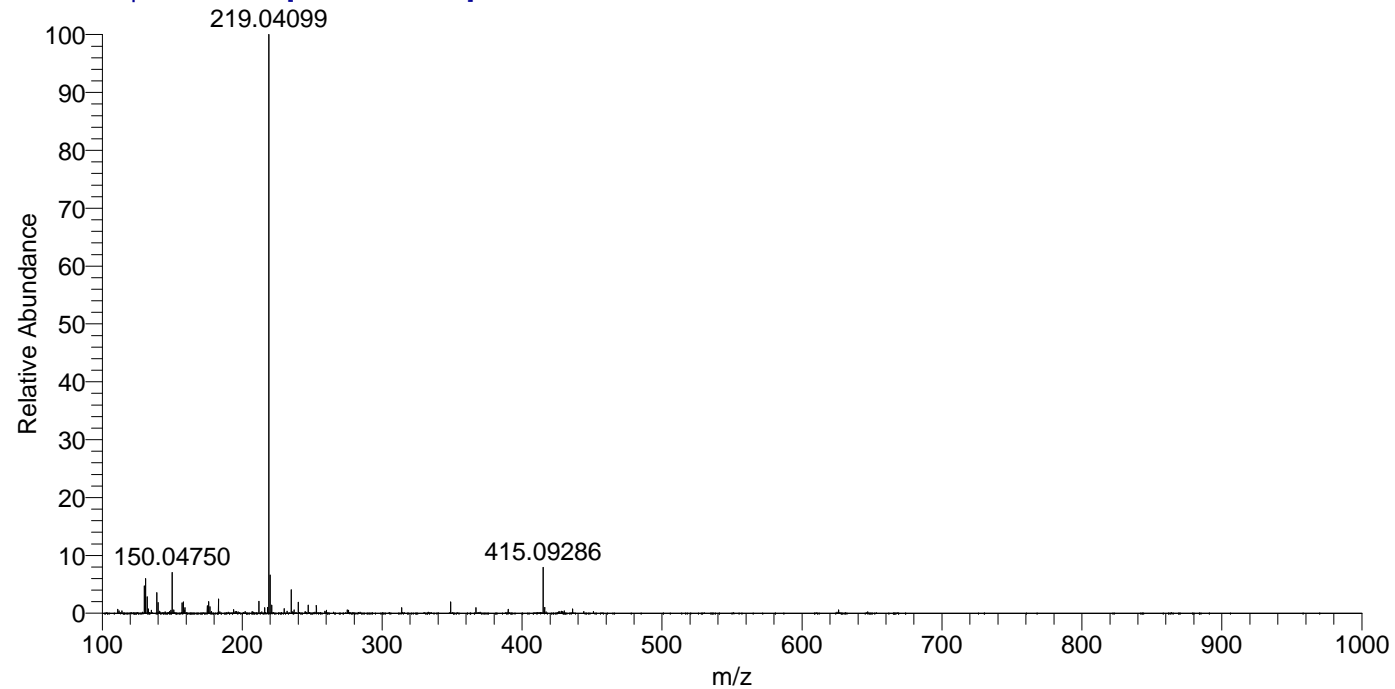
NL: 1.65E5
 Base Peak m/z=
 198.06522-198.06720 F:
 FTMS + p ESI Full ms
 [100.00-1500.00] MS
 Aperta_HDX

NL: 1.41E8
 Base Peak m/z=
 219.04078-219.04298 F:
 FTMS + p ESI Full ms
 [100.00-1500.00] MS
 Aperta_HDX

Aperta_HDX#269 RT: 1.67
 T: FTMS + p ESI Full ms [100.00-1500.00]
 m/z= 219.00000-220.00000

m/z	Intensity	Relative	Delta (ppm)	Composition
219.04099	135616720.0	100.00	-1.58	C ₆ H ₄ ² H ₄ O ₇ Na
			5.49	C ₆ H ₂ ² H ₅ O ₇ Na
			-8.65	C ₆ H ₆ ² H ₃ O ₇ Na

Aperta_HDX #269 RT: 1.67 AV: 1 NL: 1.34E8
 T: FTMS + p ESI Full ms [100.00-1500.00]



Aperta_HDX #269 RT: 1.67 AV: 1 NL: 1.34E8
 T: FTMS + p ESI Full ms [100.00-1500.00]

