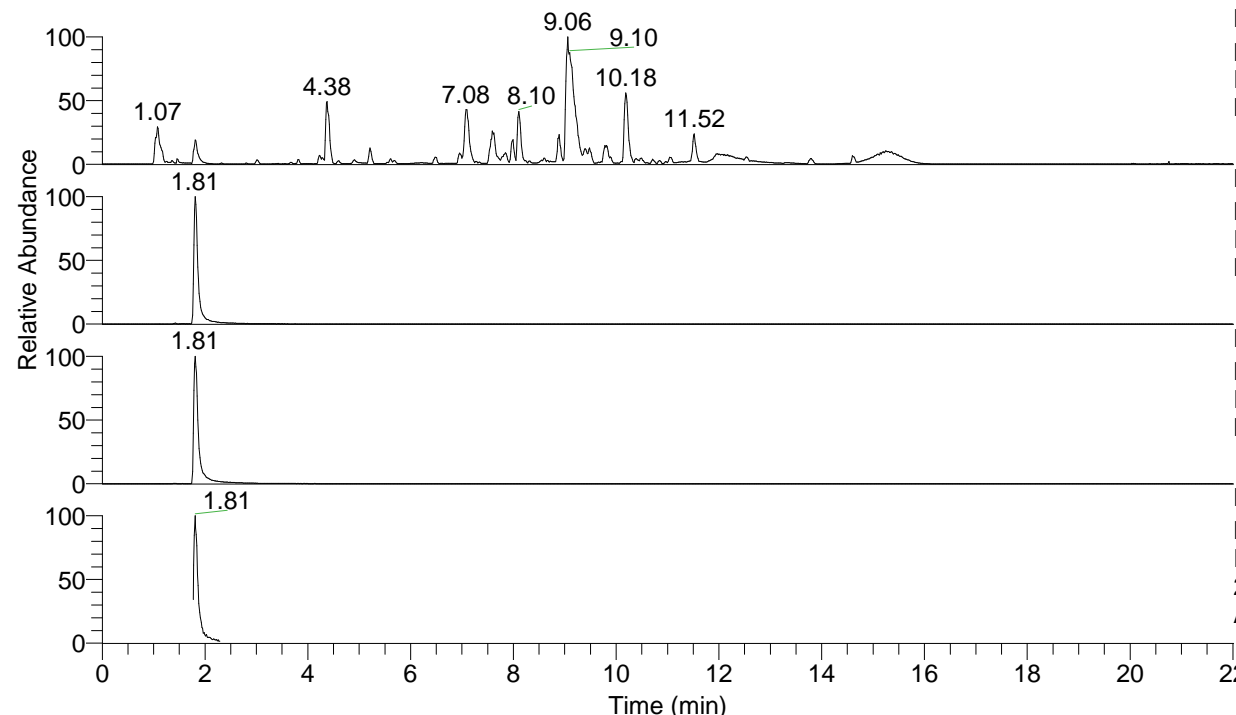


RT: 0.00 - 22.01



NL: 1.54E8
 Base Peak m/z= 100.00000-1500.00000 F:
 FTMS + p ESI Full ms [100.00-1500.00]
 MS Aperta19

NL: 6.61E6
 Base Peak m/z= 193.03385-193.03579 F:
 FTMS + p ESI Full ms [100.00-1500.00]
 MS Aperta19

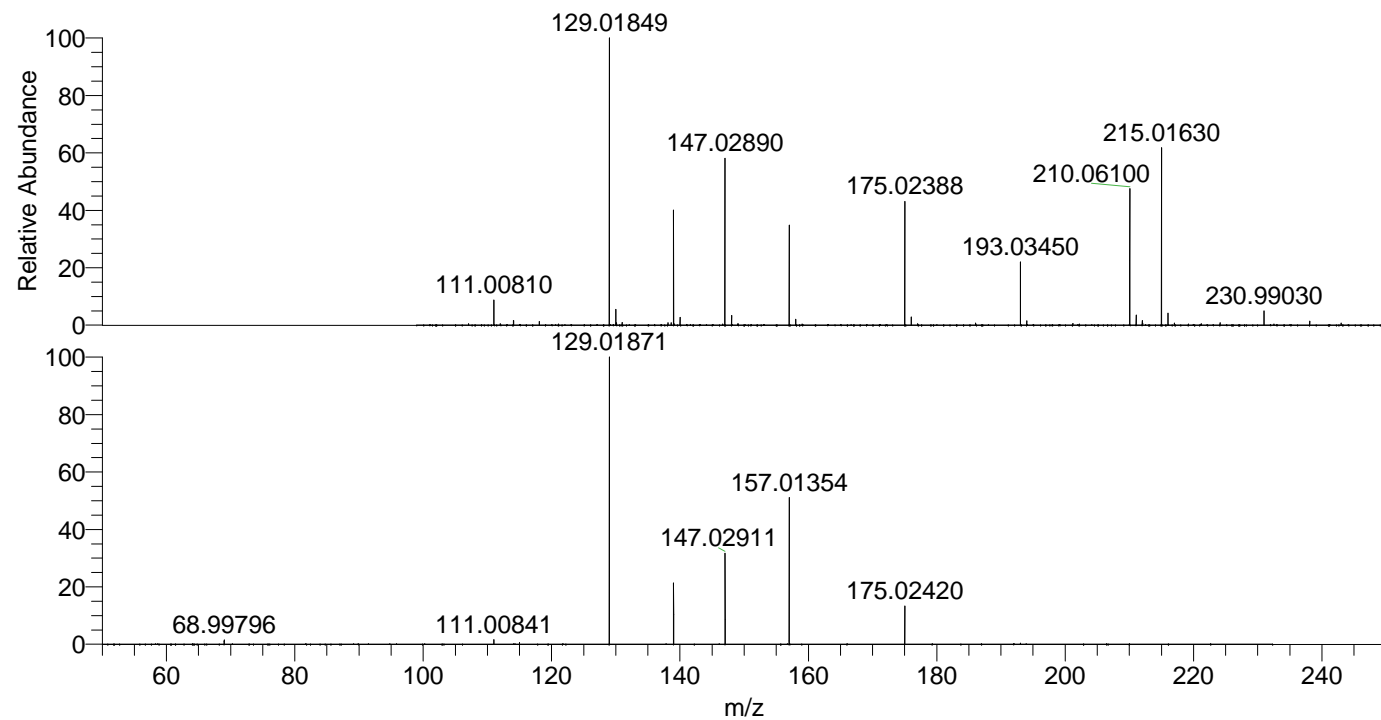
NL: 1.41E7
 Base Peak m/z= 210.06033-210.06243 F:
 FTMS + p ESI Full ms [100.00-1500.00]
 MS Aperta19

NL: 9.28E5
 Base Peak m/z= 50.00000-1500.00000 F:
 FTMS + p ESI d Full ms2
 210.06@hcd35.00 [50.00-230.00] MS
 Aperta19

Aperta19#720-785 RT: 1.77-1.91 AV: 12

F: FTMS + p ESI d Full ms2 210.06 ...
 m/z= 50.00000-1000.00000

m/z	Intensity	Relative
68.99797	7933.7	1.51
111.00839	8403.2	1.60
115.00339	3176.9	0.61
129.01871	524712.6	100.00
139.00291	111630.9	21.27
147.02911	168927.9	32.19
157.01354	270154.8	51.49
175.02421	69364.8	13.22



NL: 2.95E7
 Aperta19#739 RT: 1.81
 AV: 1 T: FTMS + p ESI
 Full ms [100.00-1500.00]

NL: 5.56E5
 Aperta19#720-781 RT:
 1.77-1.90 AV: 11 F:
 FTMS + p ESI d Full ms2
 210.06@hcd35.00
 [50.00-230.00]