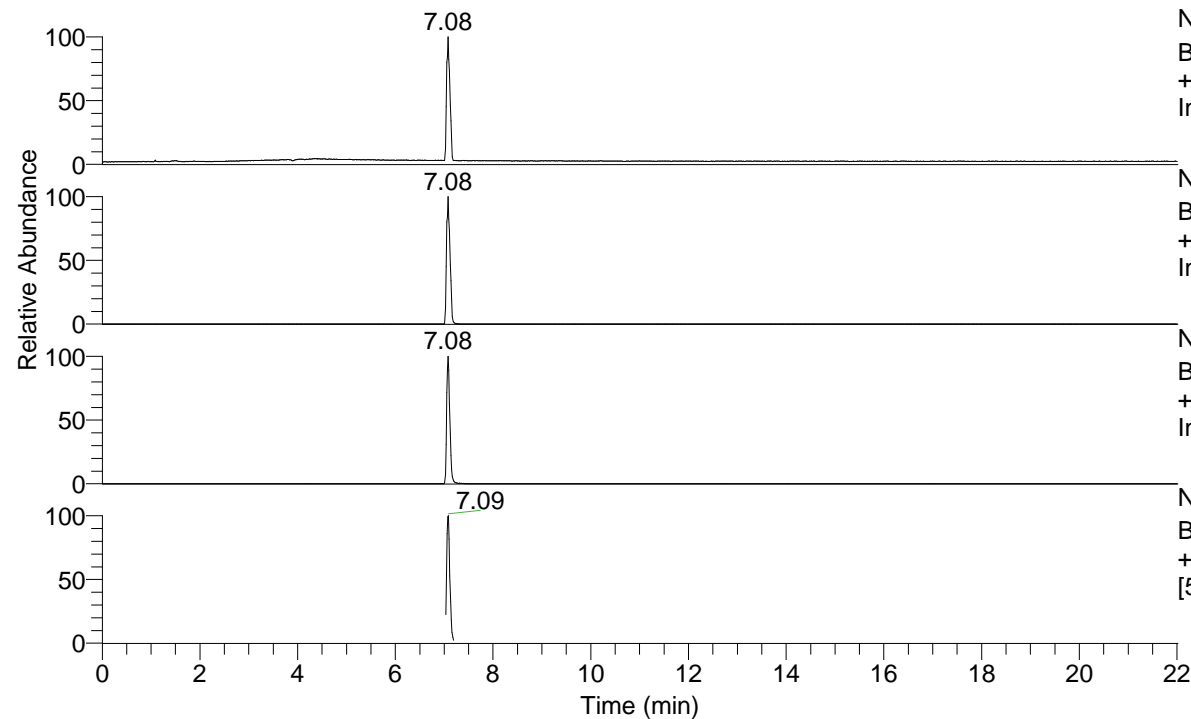


RT: 0.00 - 22.01



NL: 5.37E7  
 Base Peak m/z= 50.00000-1500.00000 F: FTMS  
 + p ESI Full ms [100.0000-1500.0000] MS  
 IndAcAsn3(Me)43

NL: 5.37E7  
 Base Peak m/z= 488.33003-488.33979 F: FTMS  
 + p ESI Full ms [100.0000-1500.0000] MS  
 IndAcAsn3(Me)43

NL: 1.22E7  
 Base Peak m/z= 244.66892-244.67382 F: FTMS  
 + p ESI Full ms [100.0000-1500.0000] MS  
 IndAcAsn3(Me)43

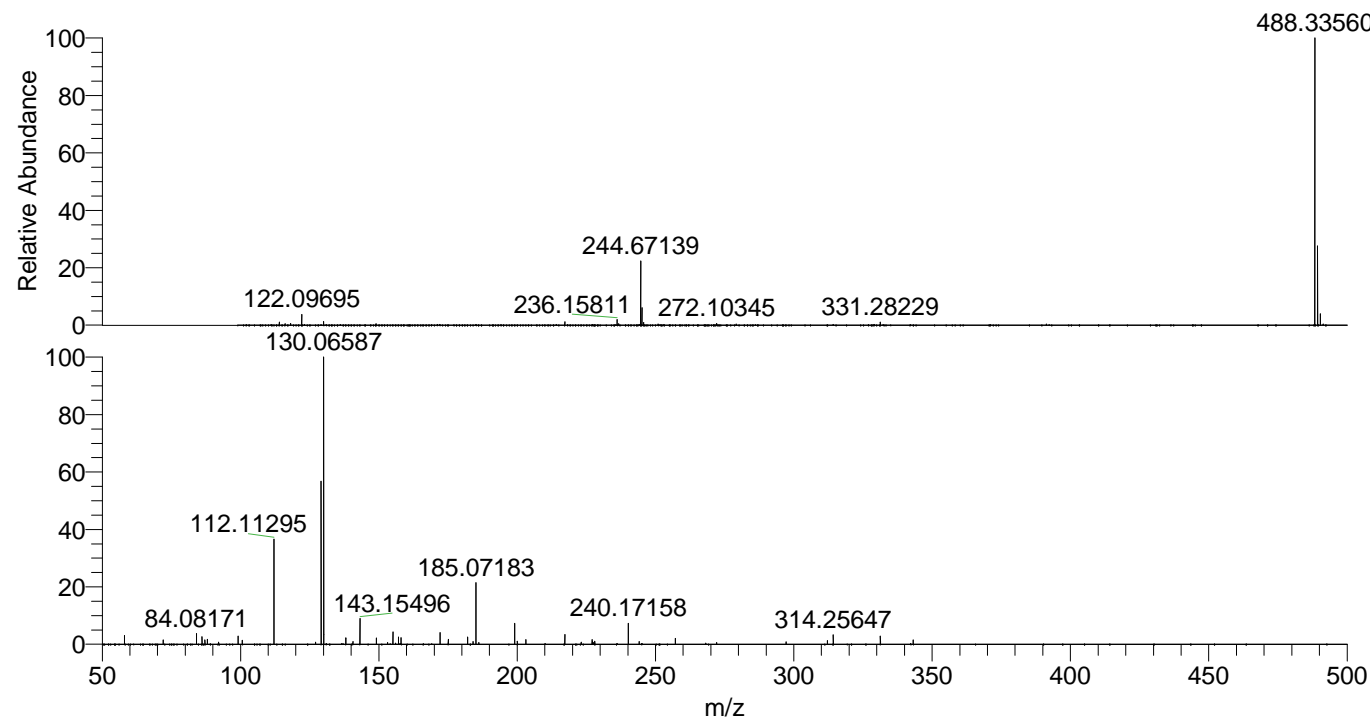
NL: 3.49E6  
 Base Peak m/z= 50.00000-1500.00000 F: FTMS  
 + p ESI d Full ms2 244.6708@hcd35.00  
 [50.0000-515.0000] MS IndAcAsn3(Me)43

IndAcAsn3(Me)43#2825-2865 RT: 7.04-7.13

F: FTMS + p ESI d Full ms2 244.6700 ...

m/z= 50.00000-1000.00000

m/z	Intensity	Relative
58.06620	63666.4	2.93
72.08182	33584.2	1.54
84.08171	78657.4	3.62
86.09737	58079.4	2.67
87.05621	33011.1	1.52
88.04021	36551.6	1.68
92.09728	15834.4	0.73
99.09256	59982.6	2.76
100.61057	29371.6	1.35
112.11295	773798.8	35.57
127.08741	16021.0	0.74
129.13940	1224027.5	56.26
130.06587	2175691.3	100.00
138.05551	48186.7	2.21
140.60526	19596.4	0.90
143.15496	191247.9	8.79
149.11879	45171.0	2.08
153.13931	12231.2	0.56
155.08223	91065.0	4.19
157.07667	51942.4	2.39
158.06062	48654.0	2.24
172.10891	86560.0	3.98
175.08743	37197.9	1.71
182.06087	52601.2	2.42
184.07678	20715.7	0.95
185.07183	454255.5	20.88
186.12466	13897.8	0.64
199.08772	156643.1	7.20
199.11603	14970.2	0.69
200.07167	22012.0	1.01
203.15125	34316.0	1.58
217.23954	72551.6	3.33
223.14512	15690.3	0.72
227.08251	33954.9	1.56
227.22391	20081.9	0.92
227.64551	13220.3	0.61
228.06645	21283.6	0.98
240.17158	158350.9	7.28
244.10919	18989.2	0.87
257.19808	43770.0	2.01
272.10439	13061.8	0.60
297.22982	16524.7	0.76
312.13617	26301.5	1.21
314.25647	69086.1	3.18
331.28352	61780.6	2.84
343.17798	31888.1	1.47



488.33560 NL: 5.26E7  
 IndAcAsn3(Me)43#2845 RT:  
 7.08 AV: 1 T: FTMS + p ESI  
 Full ms [100.0000-1500.0000]

NL: 2.11E6  
 IndAcAsn3(Me)43#2825-2867  
 RT: 7.04-7.13 AV: 8 F:  
 FTMS + p ESI d Full ms2  
 244.6708@hcd35.00  
 [50.0000-515.0000]