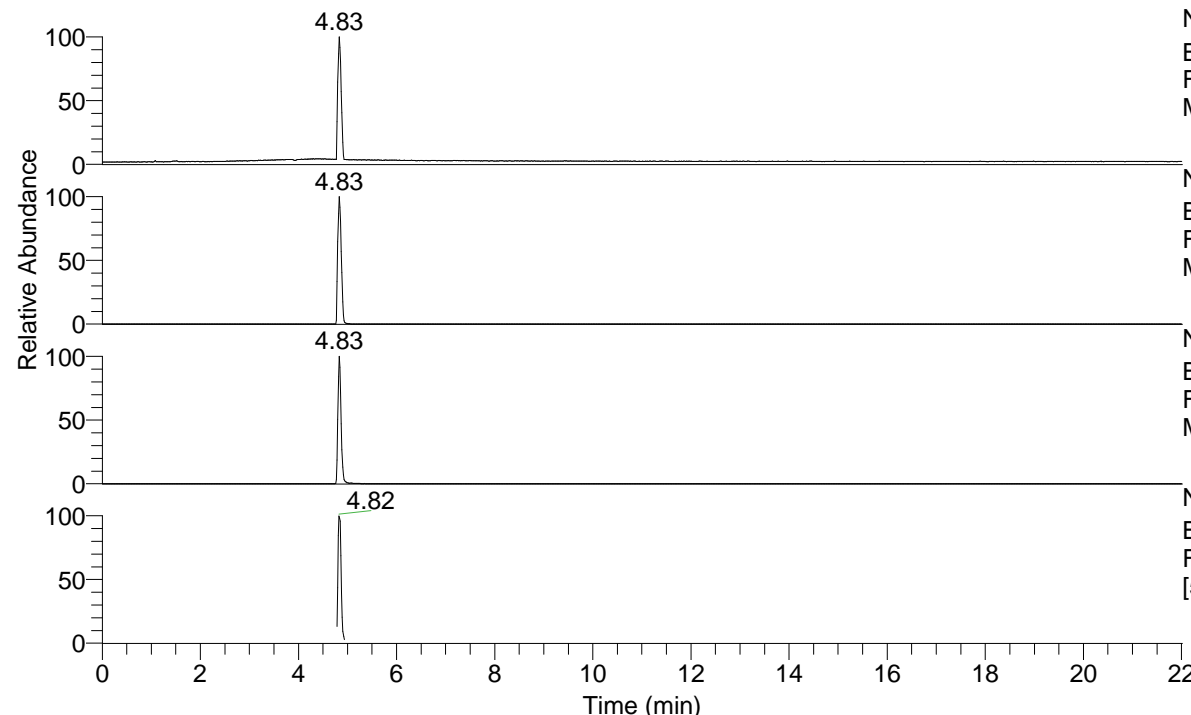


RT: 0.00 - 22.01



NL: 5.69E7  
 Base Peak m/z= 50.00000-1500.00000 F:  
 FTMS + p ESI Full ms [100.0000-1500.0000]  
 MS PhAcAsn3(Me)43

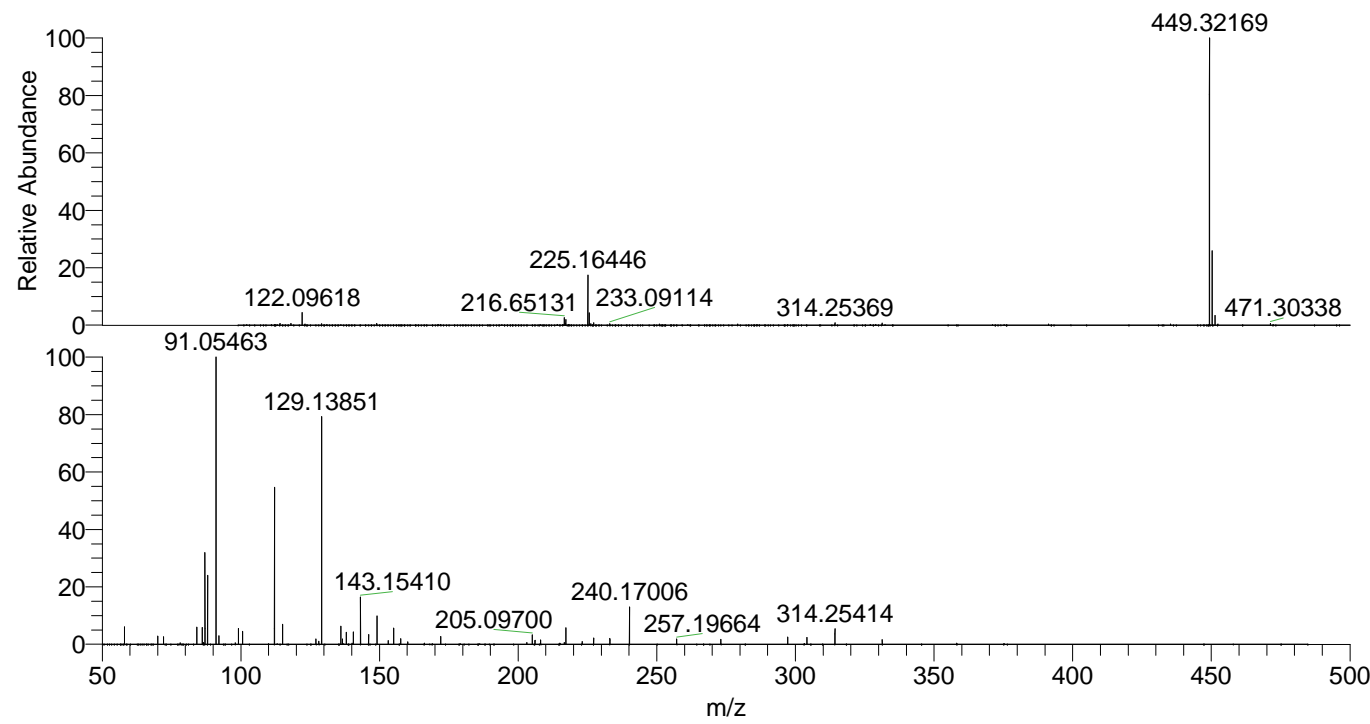
NL: 5.69E7  
 Base Peak m/z= 449.31952-449.32850 F:  
 FTMS + p ESI Full ms [100.0000-1500.0000]  
 MS PhAcAsn3(Me)43

NL: 9.94E6  
 Base Peak m/z= 225.16367-225.16817 F:  
 FTMS + p ESI Full ms [100.0000-1500.0000]  
 MS PhAcAsn3(Me)43

NL: 1.95E6  
 Base Peak m/z= 50.00000-1500.00000 F:  
 FTMS + p ESI d Full ms2 225.1644@hcd35.00  
 [50.0000-480.0000] MS PhAcAsn3(Me)43

PhAcAsn3(Me)43#1919-1965 RT: 4.78-4.89  
 F: FTMS + p ESI d Full ms2 225.1600 ...  
 m/z= 50.00000-1000.00000

m/z	Intensity	Relative
58.06589	67390.7	5.93
70.02936	33049.8	2.91
72.08135	29162.3	2.57
78.08126	5741.9	0.51
84.08127	66411.3	5.84
86.09689	65776.4	5.79
86.59450	6393.0	0.56
87.05577	356939.5	31.41
88.03976	269982.9	23.76
91.05463	1136294.6	100.00
92.09676	33063.1	2.91
99.09200	61138.4	5.38
100.61009	50084.7	4.41
112.11226	627634.3	55.24
115.05030	79908.6	7.03
127.08651	21833.0	1.92
128.11265	11489.1	1.01
129.13851	892704.0	78.56
136.07549	70238.6	6.18
136.62562	20587.7	1.81
138.05472	46267.6	4.07
140.60438	50017.8	4.40
143.15410	183325.6	16.13
146.05995	39588.1	3.48
149.11768	112714.2	9.92
153.13854	14127.7	1.24
155.08124	64030.9	5.64
157.63104	21341.1	1.88
160.18101	8929.7	0.79
172.10756	31083.3	2.74
203.14973	6295.4	0.55
205.09700	36200.4	3.19
206.08092	15513.2	1.37
208.13839	17499.1	1.54
216.65147	7335.9	0.65
217.23847	64365.4	5.66
223.14371	10469.8	0.92
227.22294	24173.1	2.13
233.09162	22540.6	1.98
240.17006	145233.0	12.78
257.19664	20756.0	1.83
273.12241	19100.7	1.68
297.22767	28296.6	2.49
304.16486	26337.6	2.32
314.25414	62937.9	5.54
331.28137	18031.7	1.59



NL: 5.68E7  
 PhAcAsn3(Me)43#1939 RT:  
 4.83 AV: 1 T: FTMS + p ESI  
 Full ms  
 [100.0000-1500.0000]

NL: 1.12E6  
 PhAcAsn3(Me)43#1917-1968  
 RT: 4.78-4.89 AV: 9 F:  
 FTMS + p ESI d Full ms2  
 225.1644@hcd35.00  
 [50.0000-480.0000]