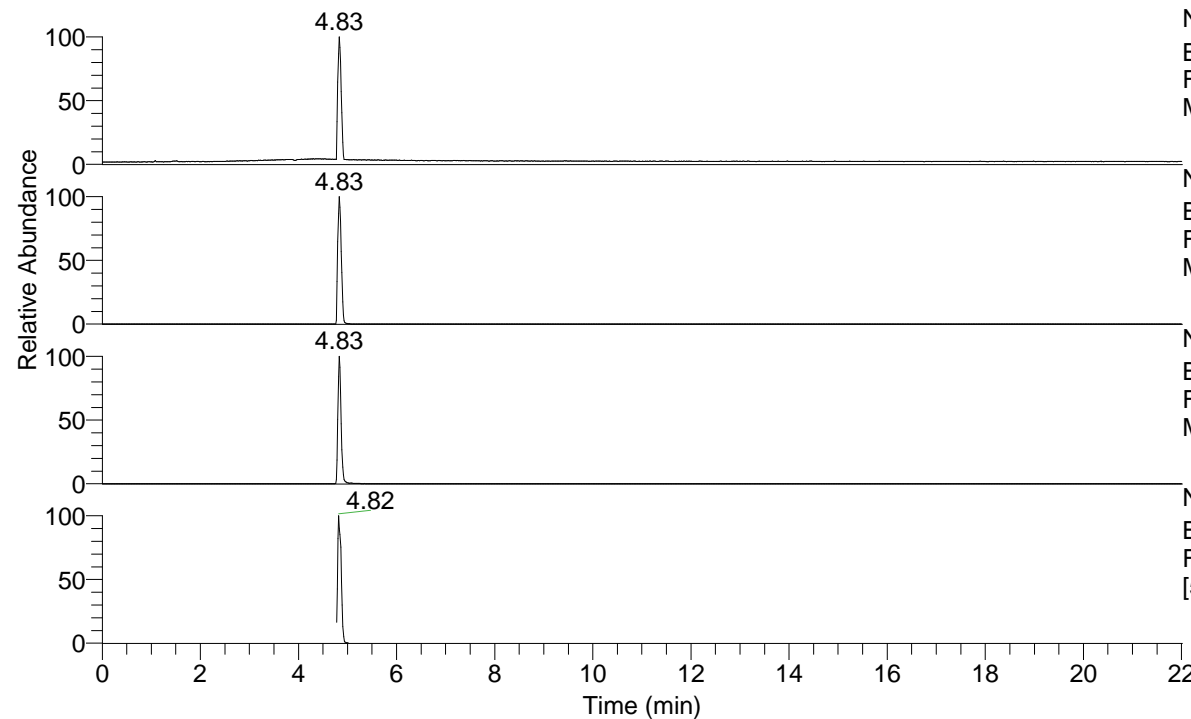


RT: 0.00 - 22.01



NL: 5.69E7  
 Base Peak m/z= 50.00000-1500.00000 F:  
 FTMS + p ESI Full ms [100.0000-1500.0000]  
 MS PhAcAsn3(Me)43

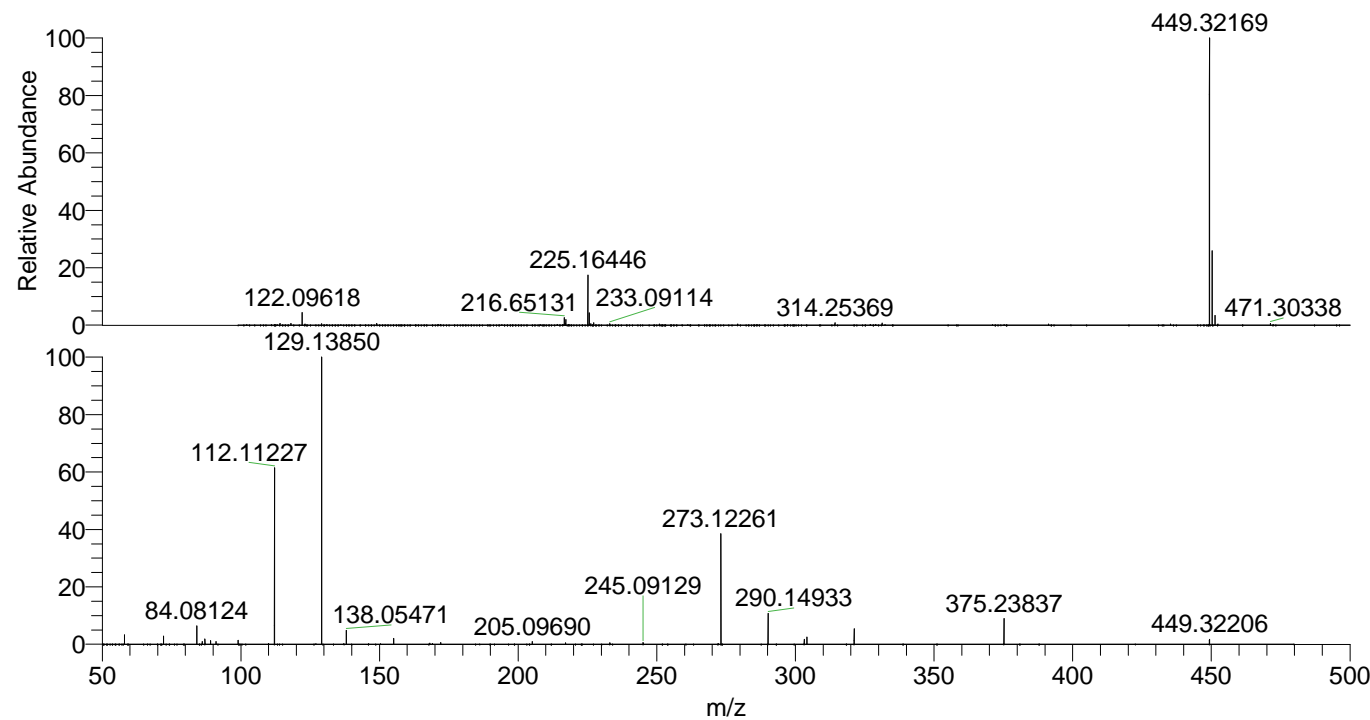
NL: 5.69E7  
 Base Peak m/z= 449.31952-449.32850 F:  
 FTMS + p ESI Full ms [100.0000-1500.0000]  
 MS PhAcAsn3(Me)43

NL: 9.94E6  
 Base Peak m/z= 225.16367-225.16817 F:  
 FTMS + p ESI Full ms [100.0000-1500.0000]  
 MS PhAcAsn3(Me)43

NL: 1.64E7  
 Base Peak m/z= 50.00000-1500.00000 F:  
 FTMS + p ESI d Full ms2 449.3217@hcd35.00  
 [50.0000-475.0000] MS PhAcAsn3(Me)43

PhAcAsn3(Me)43#1918-1964 RT: 4.78-4.89  
 F: FTMS + p ESI d Full ms2 449.3200 ...  
 m/z= 50.00000-1000.00000

m/z	Intensity	Relative
58.06588	316689.3	3.28
72.08139	272766.3	2.83
84.08125	624814.4	6.47
86.09690	92053.4	0.95
87.05577	178575.9	1.85
89.10778	125348.2	1.30
91.05505	87065.1	0.90
99.05564	135044.3	1.40
112.11231	6158134.5	63.82
129.13853	9649682.0	100.00
138.05473	466134.3	4.83
155.08106	201489.8	2.09
172.10779	59552.9	0.62
205.09691	86310.6	0.89
245.09134	58520.5	0.61
273.12285	3753008.0	38.89
290.14934	1030011.6	10.67
303.18051	166051.0	1.72
304.16482	241059.3	2.50
321.19149	519670.2	5.39
375.23841	868748.4	9.00
449.32204	161120.6	1.67



NL: 5.68E7  
 PhAcAsn3(Me)43#1939 RT:  
 4.83 AV: 1 T: FTMS + p ESI  
 Full ms  
 [100.0000-1500.0000]

NL: 1.05E7  
 PhAcAsn3(Me)43#1919-1968  
 RT: 4.79-4.89 AV: 8 F:  
 FTMS + p ESI d Full ms2  
 449.3217@hcd35.00  
 [50.0000-475.0000]