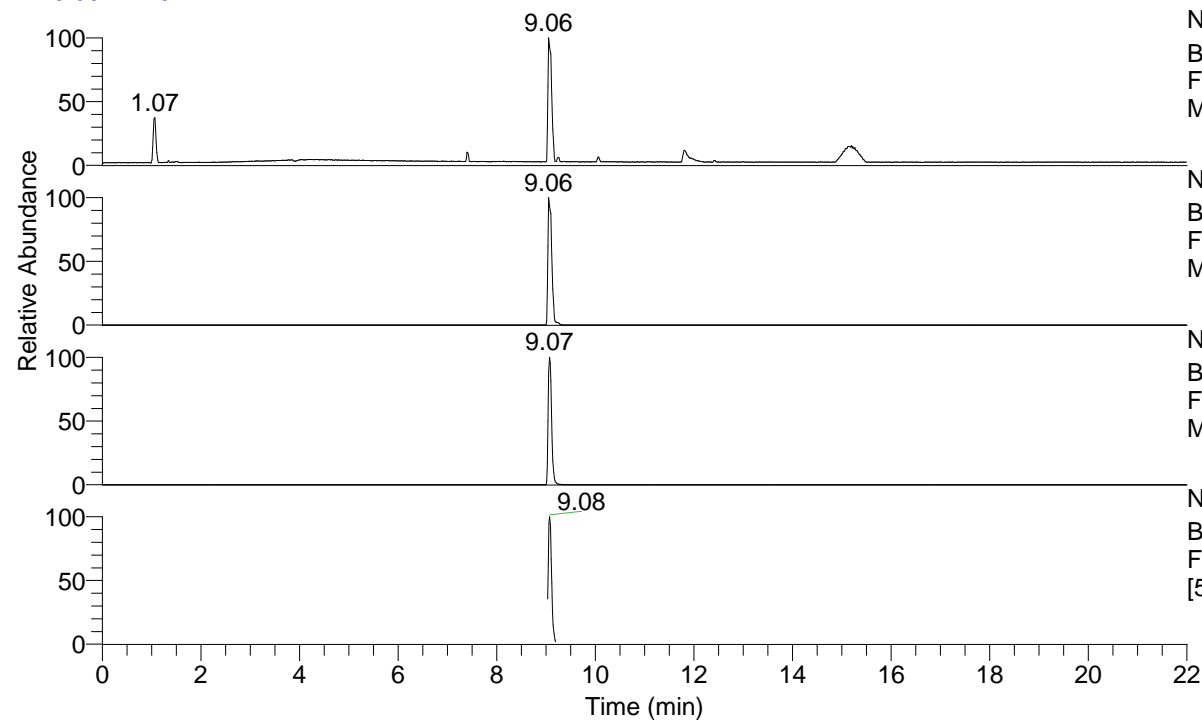


RT: 0.00 - 22.01



NL: 4.96E7
 Base Peak m/z= 50.00000-1500.00000 F:
 FTMS + p ESI Full ms [100.0000-1500.0000]
 MS IndAc3(OH)334

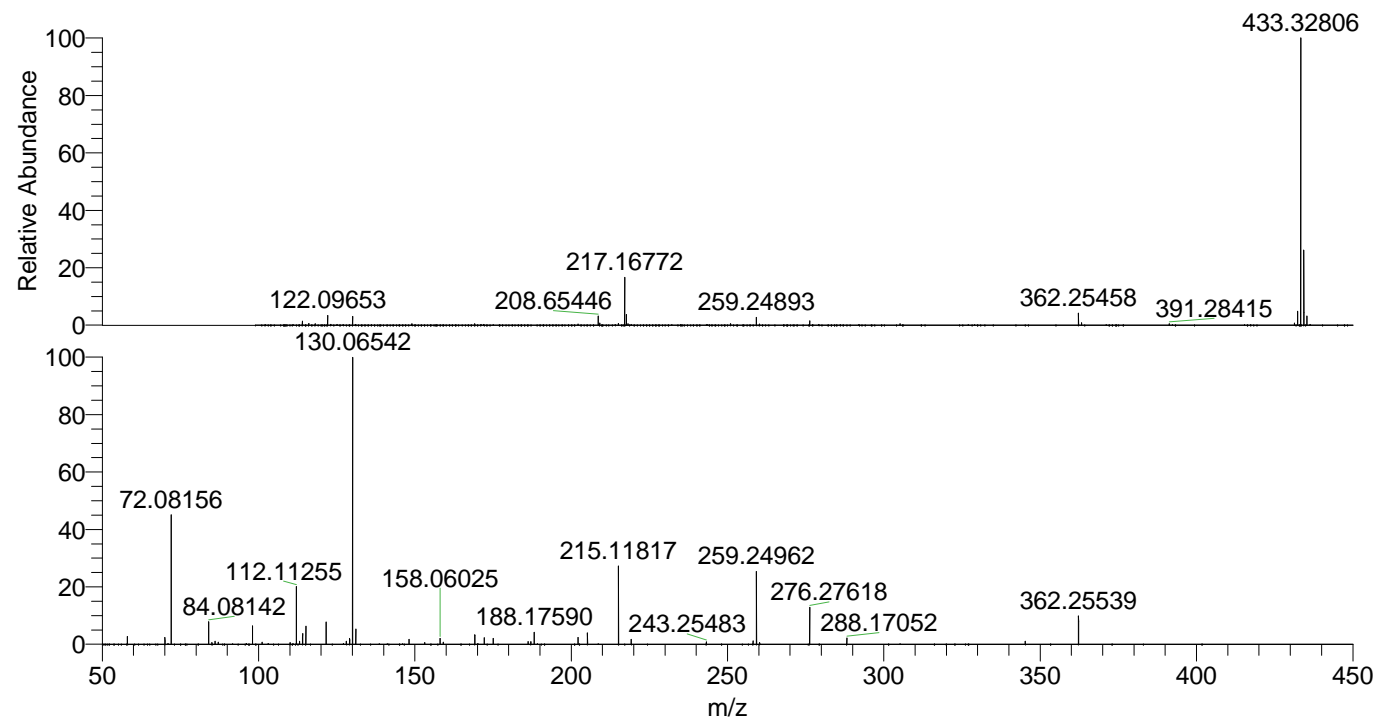
NL: 4.96E7
 Base Peak m/z= 433.32477-433.33343 F:
 FTMS + p ESI Full ms [100.0000-1500.0000]
 MS IndAc3(OH)334

NL: 9.72E6
 Base Peak m/z= 217.16629-217.17063 F:
 FTMS + p ESI Full ms [100.0000-1500.0000]
 MS IndAc3(OH)334

NL: 2.59E6
 Base Peak m/z= 50.00000-1500.00000 F:
 FTMS + p ESI d Full ms2 217.1677@hcd35.00
 [50.0000-460.0000] MS IndAc3(OH)334

IndAc3(OH)334#3628-3669 RT: 9.04-9.13
 F: FTMS + p ESI d Full ms2 217.1700 ...
 m/z= 50.00000-1000.00000

m/z	Intensity	Relative
58.06601	41635.9	2.61
70.06593	37253.1	2.34
72.08156	723348.0	45.35
84.08142	121354.9	7.61
85.07674	9450.7	0.59
86.06067	16006.5	1.00
87.09234	11257.3	0.71
98.09699	102181.3	6.41
101.10781	10381.6	0.65
112.11255	311434.3	19.53
113.10788	16541.8	1.04
114.09179	59422.2	3.73
115.12340	98190.7	6.16
121.61533	121484.5	7.62
128.10721	16378.4	1.03
129.13913	32452.0	2.03
130.06542	1594899.8	100.00
130.12841	59371.9	3.72
131.11809	82544.3	5.18
148.14448	27816.2	1.74
153.13877	8734.1	0.55
158.06025	32602.1	2.04
159.09175	11032.3	0.69
169.17008	52103.5	3.27
172.18088	35939.0	2.25
175.06305	32686.7	2.05
186.19652	14860.1	0.93
187.08702	13940.9	0.87
188.17590	64784.8	4.06
202.19154	38527.2	2.42
205.20244	62140.9	3.90
215.11817	421784.8	26.45
219.21844	27933.3	1.75
243.25483	12552.3	0.79
258.16037	18511.8	1.16
259.24962	394422.8	24.73
260.28076	9432.0	0.59
276.27618	201946.1	12.66
288.17052	33815.9	2.12
345.22787	16160.0	1.01
362.25539	153547.5	9.63



NL: 4.96E7
 IndAc3(OH)334#3637 RT:
 9.06 AV: 1 T: FTMS + p ESI
 Full ms
 [100.0000-1500.0000]

NL: 1.55E6
 IndAc3(OH)334#3625-3673
 RT: 9.04-9.13 AV: 8 F:
 FTMS + p ESI d Full ms2
 217.1677@hcd35.00
 [50.0000-460.0000]