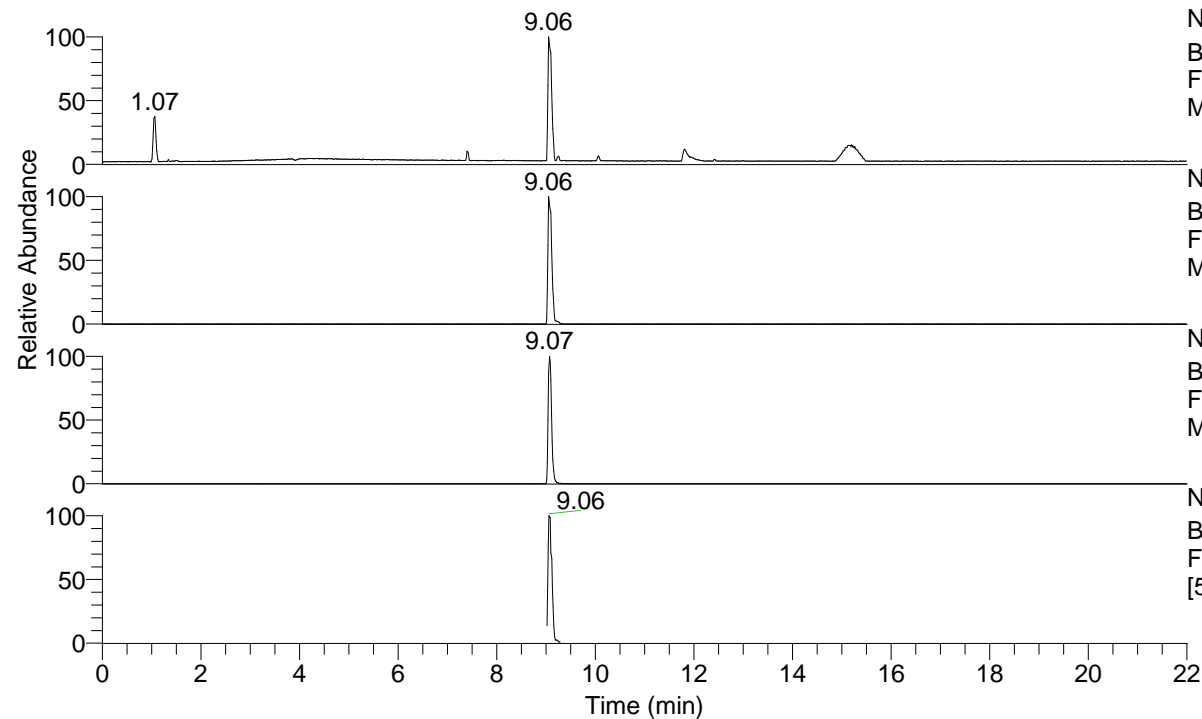


RT: 0.00 - 22.01



NL: 4.96E7  
 Base Peak m/z= 50.00000-1500.00000 F:  
 FTMS + p ESI Full ms [100.0000-1500.0000]  
 MS IndAc3(OH)334

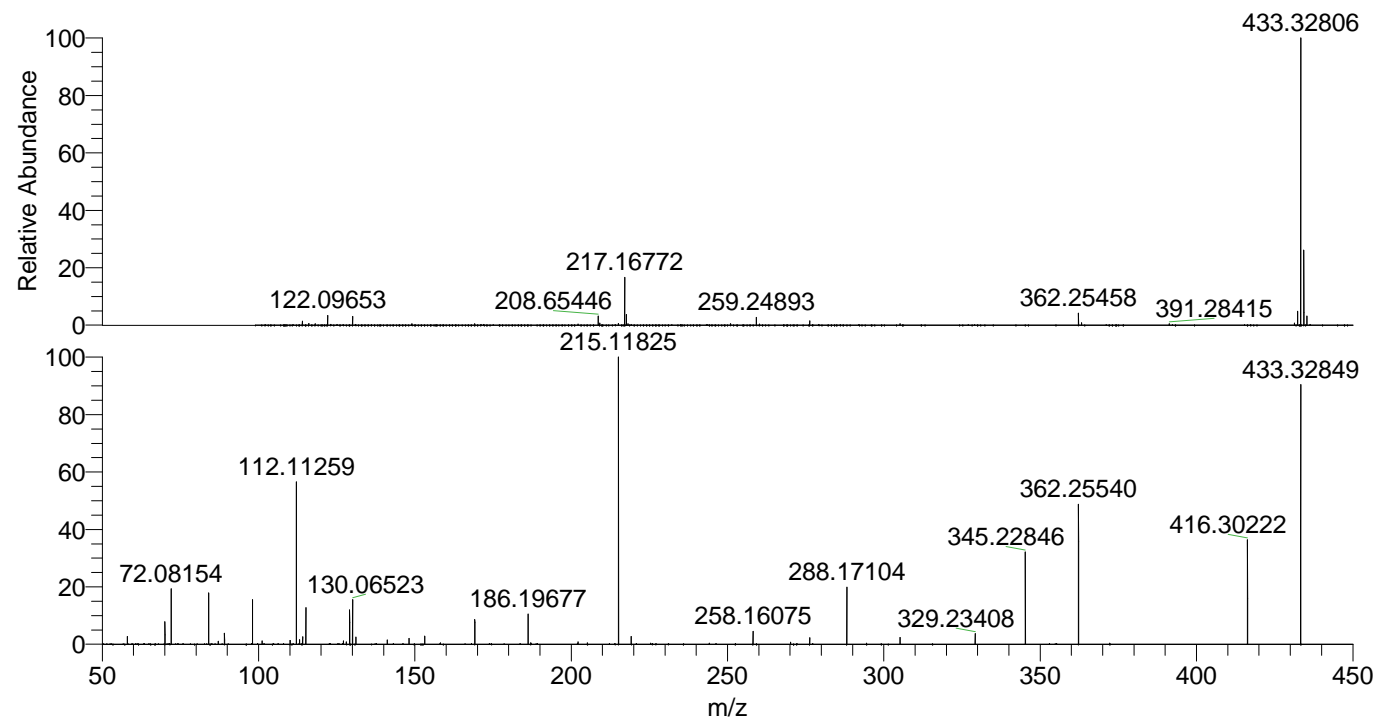
NL: 4.96E7  
 Base Peak m/z= 433.32477-433.33343 F:  
 FTMS + p ESI Full ms [100.0000-1500.0000]  
 MS IndAc3(OH)334

NL: 9.72E6  
 Base Peak m/z= 217.16629-217.17063 F:  
 FTMS + p ESI Full ms [100.0000-1500.0000]  
 MS IndAc3(OH)334

NL: 2.76E6  
 Base Peak m/z= 50.00000-1500.00000 F:  
 FTMS + p ESI d Full ms2 433.3280@hcd35.00  
 [50.0000-460.0000] MS IndAc3(OH)334

IndAc3(OH)334#3622-3680 RT: 9.02-9.16  
 F: FTMS + p ESI d Full ms2 433.3300 ...  
 m/z= 50.00000-1000.00000

m/z	Intensity	Relative
58.06598	41322.3	2.67
70.06587	118312.6	7.63
72.08155	302708.1	19.53
84.08143	274313.5	17.70
87.09218	15895.4	1.03
89.10790	61161.9	3.95
98.09701	248207.7	16.01
101.10787	16989.2	1.10
110.09704	20219.9	1.30
112.11259	881252.6	56.85
112.12011	8016.2	0.52
113.10778	24441.4	1.58
114.09174	41242.7	2.66
115.12346	199102.4	12.84
127.12309	17802.3	1.15
128.10717	11910.1	0.77
129.13885	186784.4	12.05
130.06529	239019.5	15.42
131.11824	38973.3	2.51
141.13887	23089.8	1.49
148.14477	32923.6	2.12
153.13879	44414.8	2.87
158.16532	8701.7	0.56
169.17011	133268.6	8.60
186.19678	160472.4	10.35
187.08631	8315.5	0.54
202.19142	13281.3	0.86
215.11826	1550163.4	100.00
219.21840	42663.9	2.75
258.16081	70050.0	4.52
270.15988	12215.5	0.79
276.27609	35370.4	2.28
288.17105	304567.6	19.65
305.19663	36098.6	2.33
329.23428	58475.6	3.77
345.22849	482256.9	31.11
362.25553	754159.4	48.65
416.30223	548846.2	35.41
433.32890	1358384.1	87.63



NL: 4.96E7  
 IndAc3(OH)334#3637 RT:  
 9.06 AV: 1 T: FTMS + p ESI  
 Full ms  
 [100.0000-1500.0000]

NL: 1.78E6  
 IndAc3(OH)334#3624-3679  
 RT: 9.03-9.15 AV: 9 F:  
 FTMS + p ESI d Full ms2  
 433.3280@hcd35.00  
 [50.0000-460.0000]