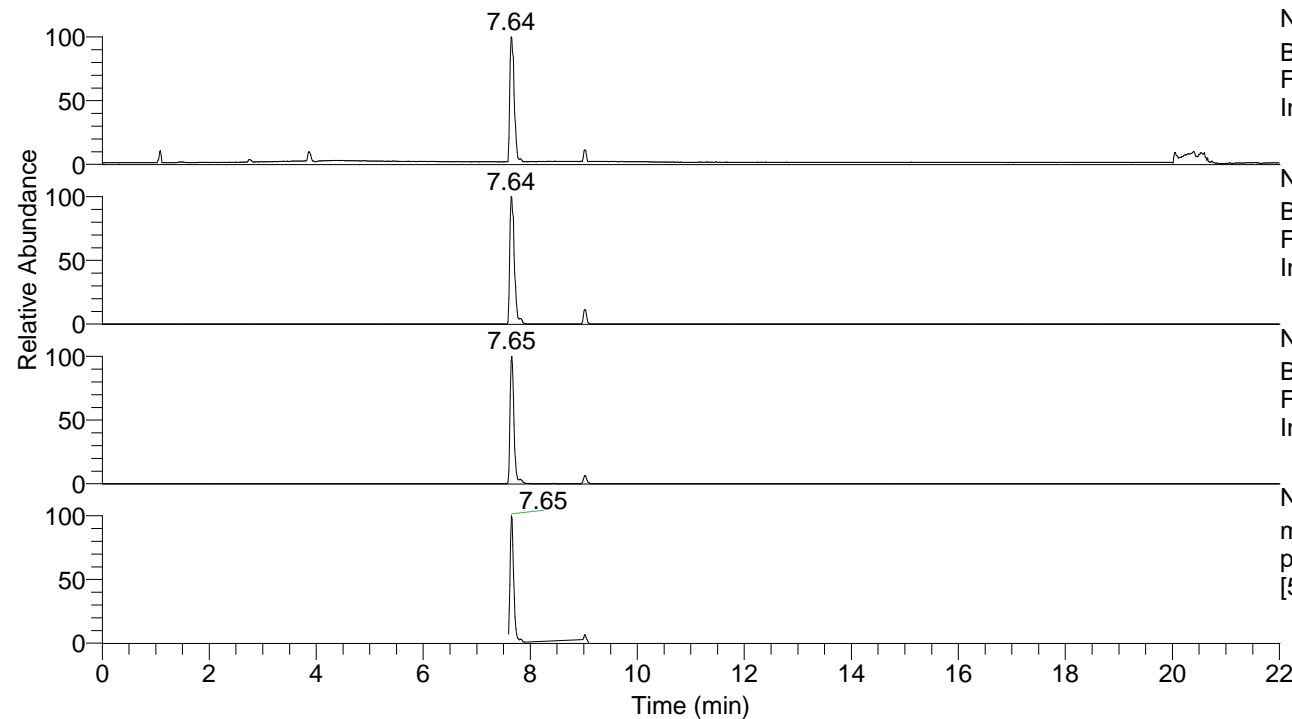


RT: 0.00 - 22.01



NL: 4.45E7
 Base Peak m/z= 50.00000-1500.00000
 F: FTMS + p ESI Full ms MS
 IndAc3343

NL: 4.45E7
 Base Peak m/z= 417.33001-417.33835
 F: FTMS + p ESI Full ms MS
 IndAc3343

NL: 1.51E7
 Base Peak m/z= 209.16891-209.17309
 F: FTMS + p ESI Full ms MS
 IndAc3343

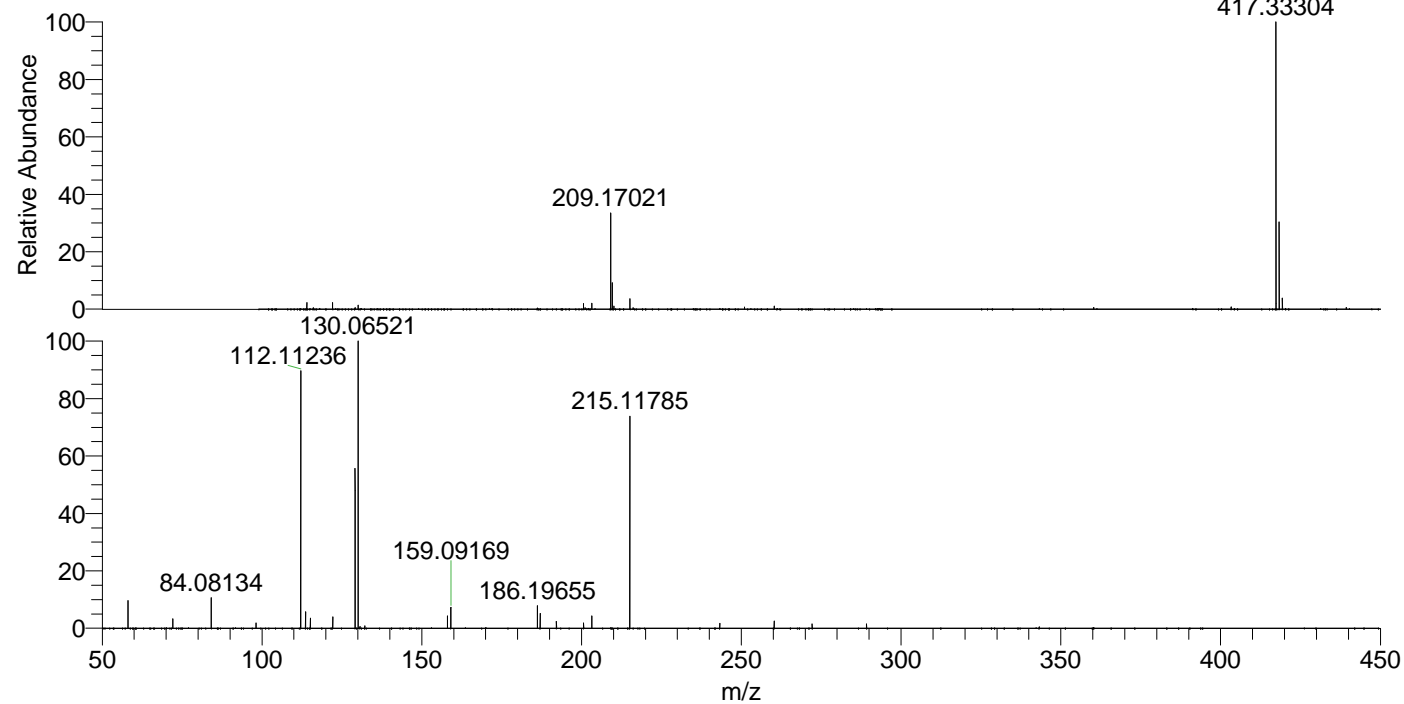
NL: 1.36E7
 m/z= 50.00000-1500.00000 F: FTMS +
 p ESI d Full ms2 209.17@hcd35.00
 [50.00-445.00] MS IndAc3343

IndAc3343#3030-3087 RT: 7.59-7.73 AV: 11

F: FTMS + p ESI d Full ms2 209.17@h ...

m/z= 50.00000-1000.00000

m/z	Intensity	Relative
58.06597	156543.3	9.63
72.08143	53475.9	3.29
84.08134	173827.3	10.69
98.09689	29981.0	1.84
112.11236	1510093.0	92.91
113.61782	93085.5	5.73
115.12321	59103.8	3.64
122.13099	64533.8	3.97
129.13872	907751.6	55.85
130.06521	1625367.1	100.00
130.64407	10441.7	0.64
132.14967	12719.3	0.78
158.06006	68886.5	4.24
159.09169	121562.8	7.48
186.19655	129723.9	7.98
187.08663	85163.2	5.24
192.14390	40009.4	2.46
200.65713	29734.6	1.83
203.22291	72887.7	4.48
215.11785	1235746.8	76.03
243.25430	27868.6	1.71
260.28113	40424.1	2.49
272.17522	25317.0	1.56
289.20199	24716.2	1.52
343.25144	8269.5	0.51



NL: 4.24E7
 IndAc3343#3049 RT: 7.64
 AV: 1 T: FTMS + p ESI
 Full ms [100.00-1500.00]

NL: 1.62E6
 IndAc3343#3030-3089
 RT: 7.59-7.73 AV: 11 F:
 FTMS + p ESI d Full ms2
 209.17@hcd35.00
 [50.00-445.00]