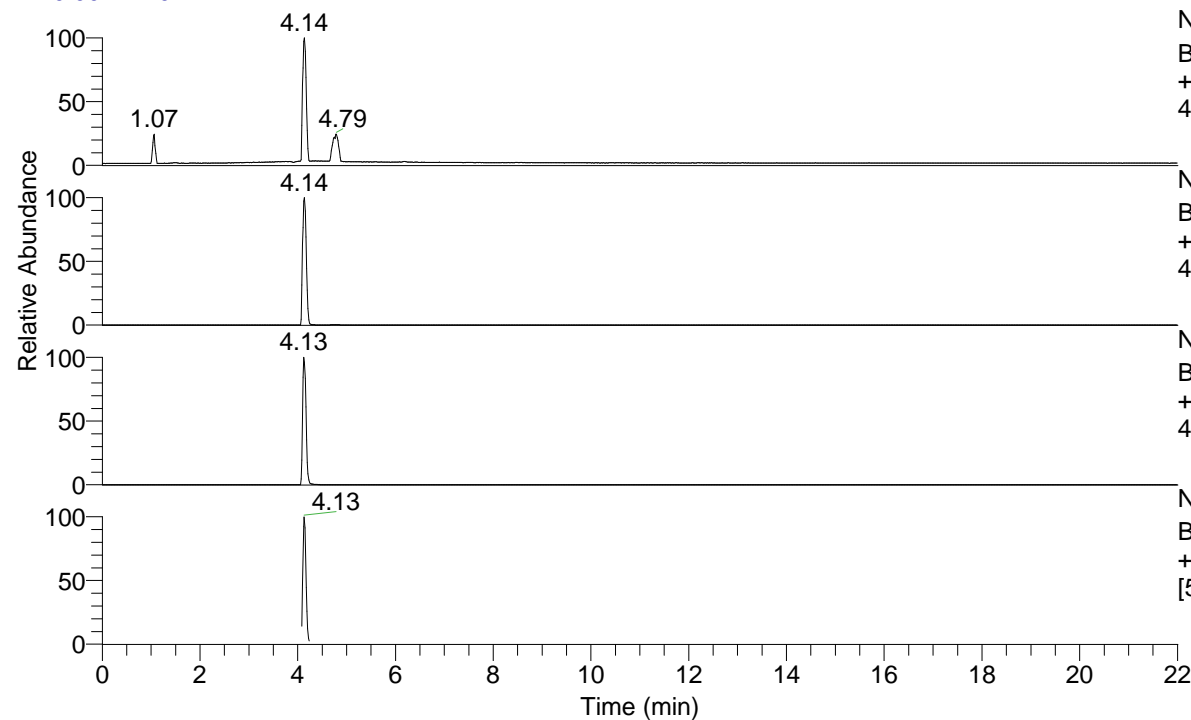


RT: 0.00 - 22.01



NL: 6.84E7  
 Base Peak m/z= 50.00000-1500.00000 F: FTMS  
 + p ESI Full ms [100.0000-1500.0000] MS  
 4-OH-Bz3(OH)334

NL: 6.84E7  
 Base Peak m/z= 396.29351-396.30143 F: FTMS  
 + p ESI Full ms [100.0000-1500.0000] MS  
 4-OH-Bz3(OH)334

NL: 8.57E6  
 Base Peak m/z= 198.65066-198.65464 F: FTMS  
 + p ESI Full ms [100.0000-1500.0000] MS  
 4-OH-Bz3(OH)334

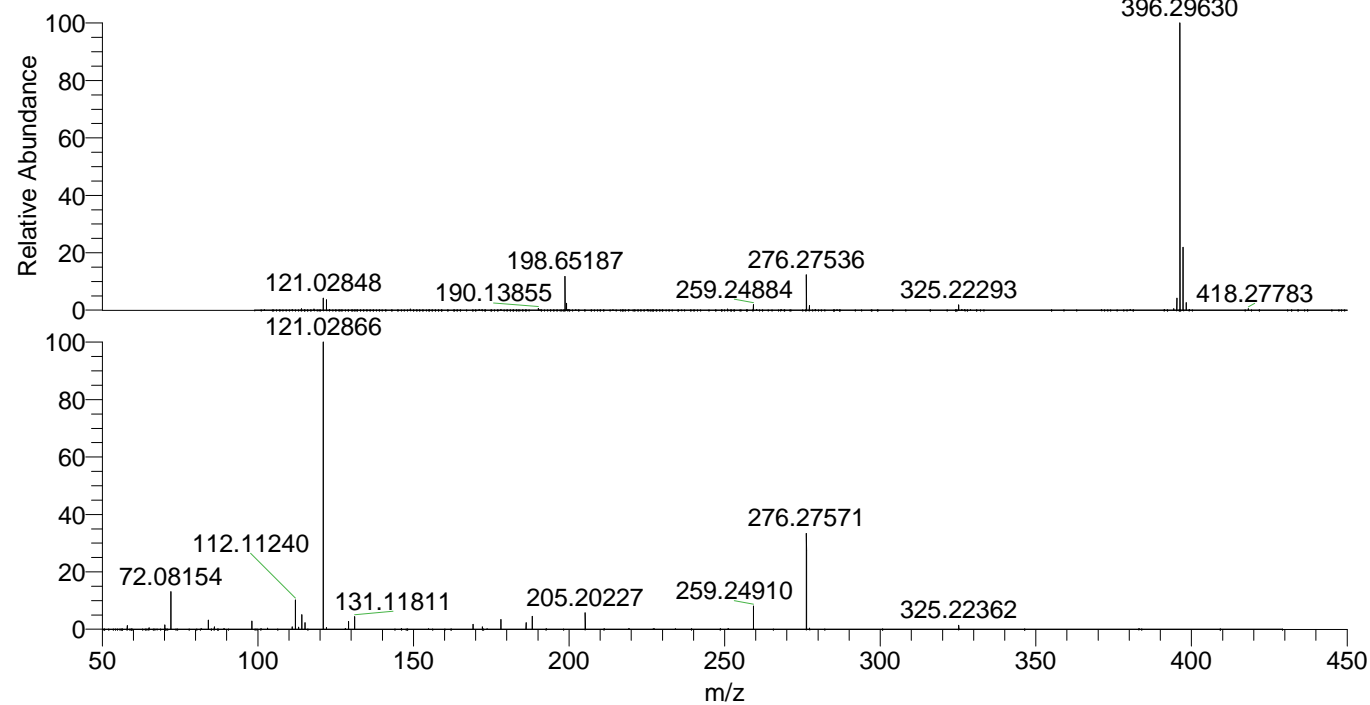
NL: 1.88E6  
 Base Peak m/z= 50.00000-1500.00000 F: FTMS  
 + p ESI d Full ms2 198.6519@hcd35.00  
 [50.0000-425.0000] MS 4-OH-Bz3(OH)334

4-OH-Bz3(OH)334#1638-1683 RT: 4.08-4.19

F: FTMS + p ESI d Full ms2 198.6500 ...

m/z= 50.00000-1000.00000

m/z	Intensity	Relative
58.06593	13498.1	1.28
70.06587	16824.8	1.60
72.08154	137672.8	13.08
84.08142	34323.3	3.26
86.06062	9348.7	0.89
98.09689	30383.3	2.89
111.04448	8716.7	0.83
112.11240	109148.9	10.37
113.10753	7465.5	0.71
114.09174	53269.6	5.06
115.12329	24759.8	2.35
121.02866	1052378.3	100.00
122.03212	6567.9	0.62
129.13872	28143.7	2.67
131.11811	46710.0	4.44
169.17017	18497.6	1.76
172.18115	8784.9	0.83
178.08632	36698.3	3.49
186.19668	24120.7	2.29
188.17570	48301.6	4.59
205.20227	62900.1	5.98
259.24910	84898.6	8.07
276.27571	351351.2	33.39
325.22362	14525.9	1.38



NL: 6.75E7  
 4-OH-Bz3(OH)334#1663 RT:  
 4.14 AV: 1 T: FTMS + p ESI  
 Full ms [100.0000-1500.0000]

NL: 1.05E6  
 4-OH-Bz3(OH)334#1637-  
 1688 RT: 4.08-4.19 AV: 7 F:  
 FTMS + p ESI d Full ms2  
 198.6519@hcd35.00  
 [50.0000-425.0000]