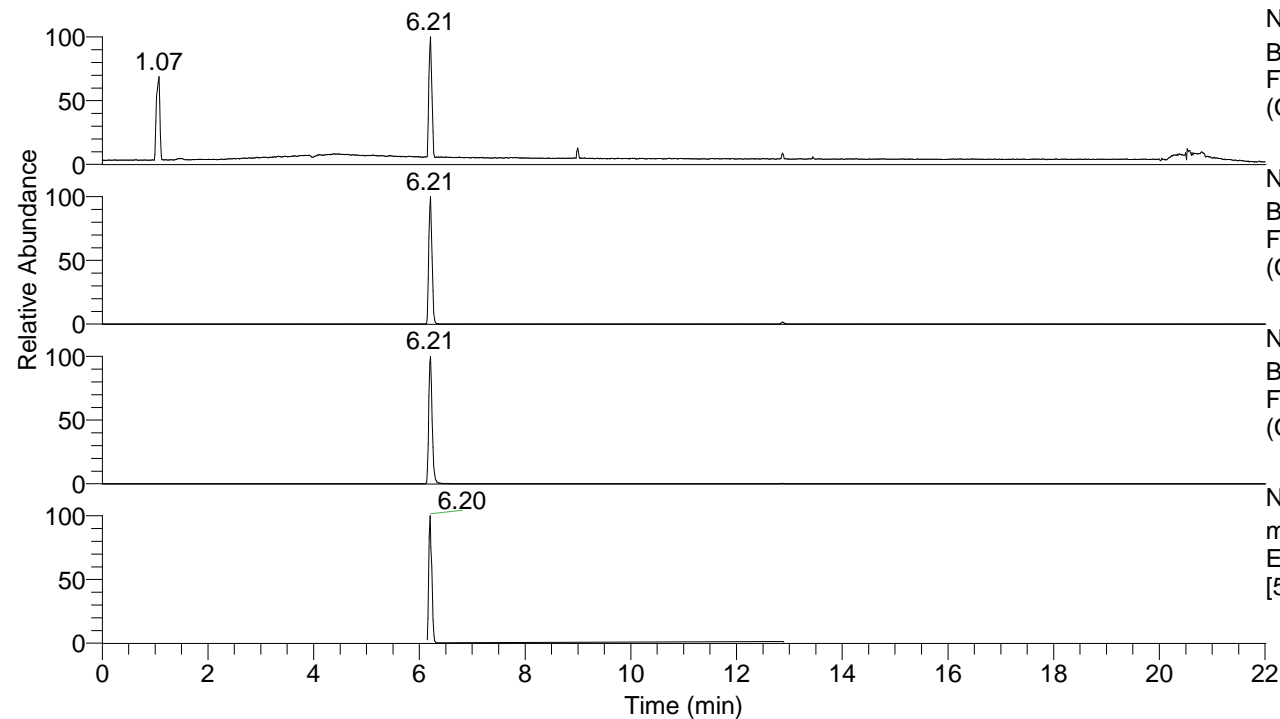


RT: 0.00 - 22.01



NL: 2.04E7
 Base Peak m/z= 50.00000-1500.00000
 F: FTMS + p ESI Full ms MS
 (OH)2-Bz4333

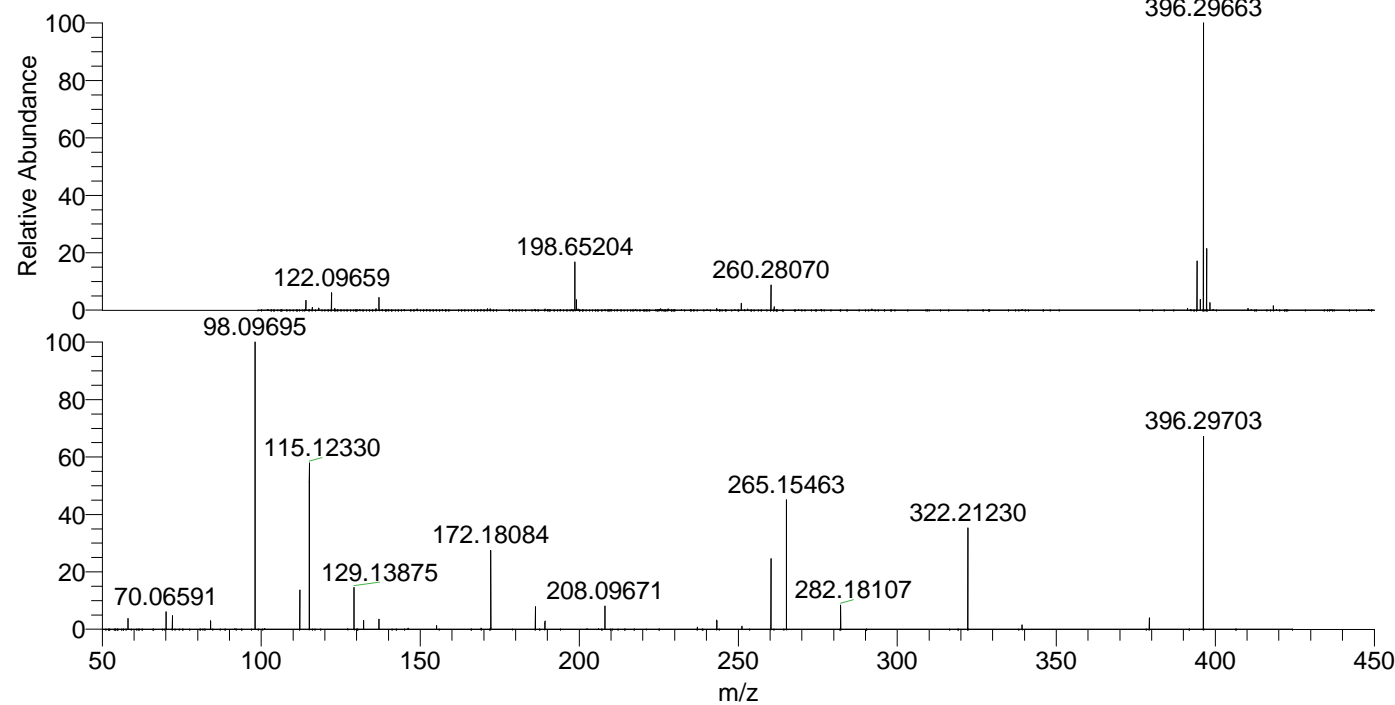
NL: 2.04E7
 Base Peak m/z= 396.29351-396.30143
 F: FTMS + p ESI Full ms MS
 (OH)2-Bz4333

NL: 3.41E6
 Base Peak m/z= 198.65066-198.65464
 F: FTMS + p ESI Full ms MS
 (OH)2-Bz4333

NL: 1.42E7
 m/z= 50.00000-1500.00000 F: FTMS + p
 ESI d Full ms2 396.30@hcd35.00
 [50.00-420.00] MS (OH)2-Bz4333

(OH)2-Bz4333#2454-2498 RT: 6.15-6.26
 F: FTMS + p ESI d Full ms2 396.30@h ...
 m/z= 50.00000-1000.00000

m/z	Intensity	Relative
58.06596	55603.3	3.72
70.06591	91984.8	6.16
72.08157	69173.1	4.63
84.08141	44019.3	2.95
98.09695	1492962.3	100.00
112.11240	201239.4	13.48
115.12330	856964.4	57.40
129.13876	220591.5	14.78
132.14961	44954.7	3.01
137.02342	52248.5	3.50
155.15434	18886.8	1.27
172.18084	409803.9	27.45
186.19646	114793.9	7.69
189.20753	42444.6	2.84
208.09670	118258.8	7.92
237.12340	10825.7	0.73
243.25413	46173.4	3.09
251.13913	15273.9	1.02
260.28062	363405.3	24.34
265.15462	666553.7	44.65
282.18107	125659.7	8.42
322.21230	526417.1	35.26
339.23954	22062.3	1.48
379.26979	58578.0	3.92
396.29698	985046.9	65.98



NL: 2.02E7
 (OH)2-Bz4333#2479 RT:
 6.21 AV: 1 T: FTMS + p
 ESI Full ms
 [100.00-1500.00]

NL: 1.64E6
 (OH)2-Bz4333#2455-2498
 RT: 6.16-6.26 AV: 8 F:
 FTMS + p ESI d Full ms2
 396.30@hcd35.00
 [50.00-420.00]