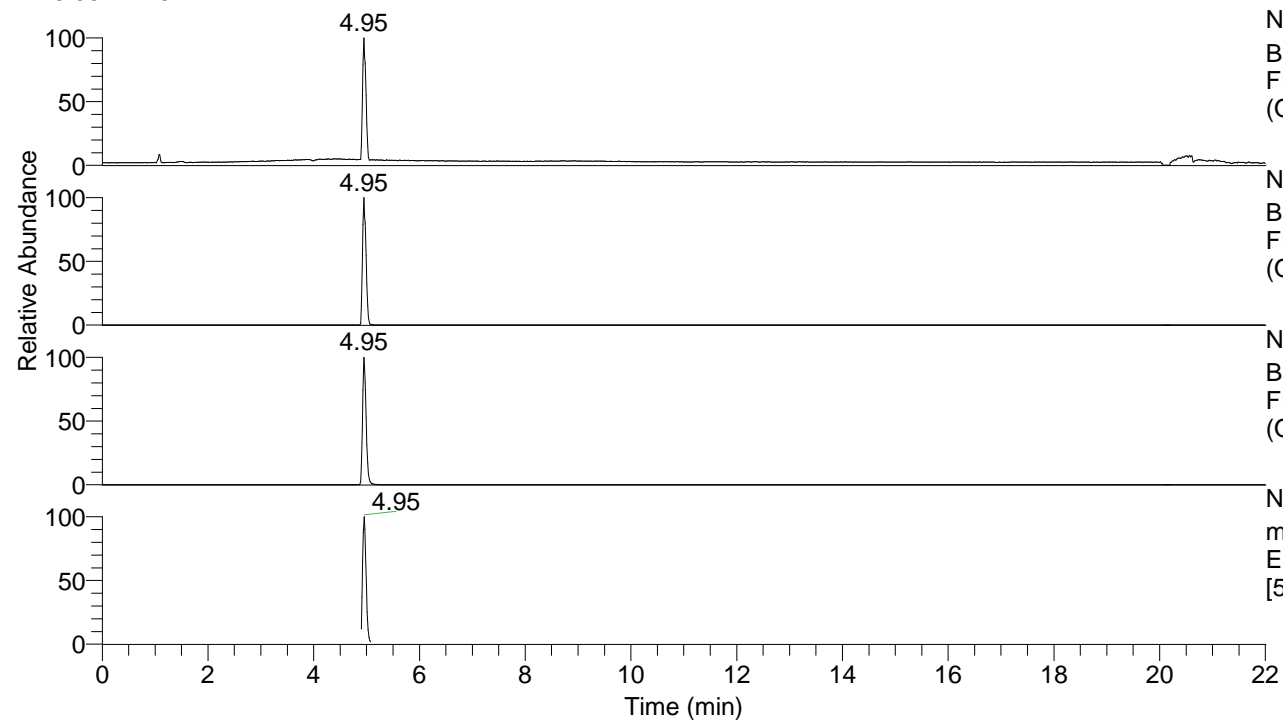


RT: 0.00 - 22.01



NL: 3.18E7
 Base Peak m/z= 50.00000-1500.00000
 F: FTMS + p ESI Full ms MS
 (OH)2-Bz3433

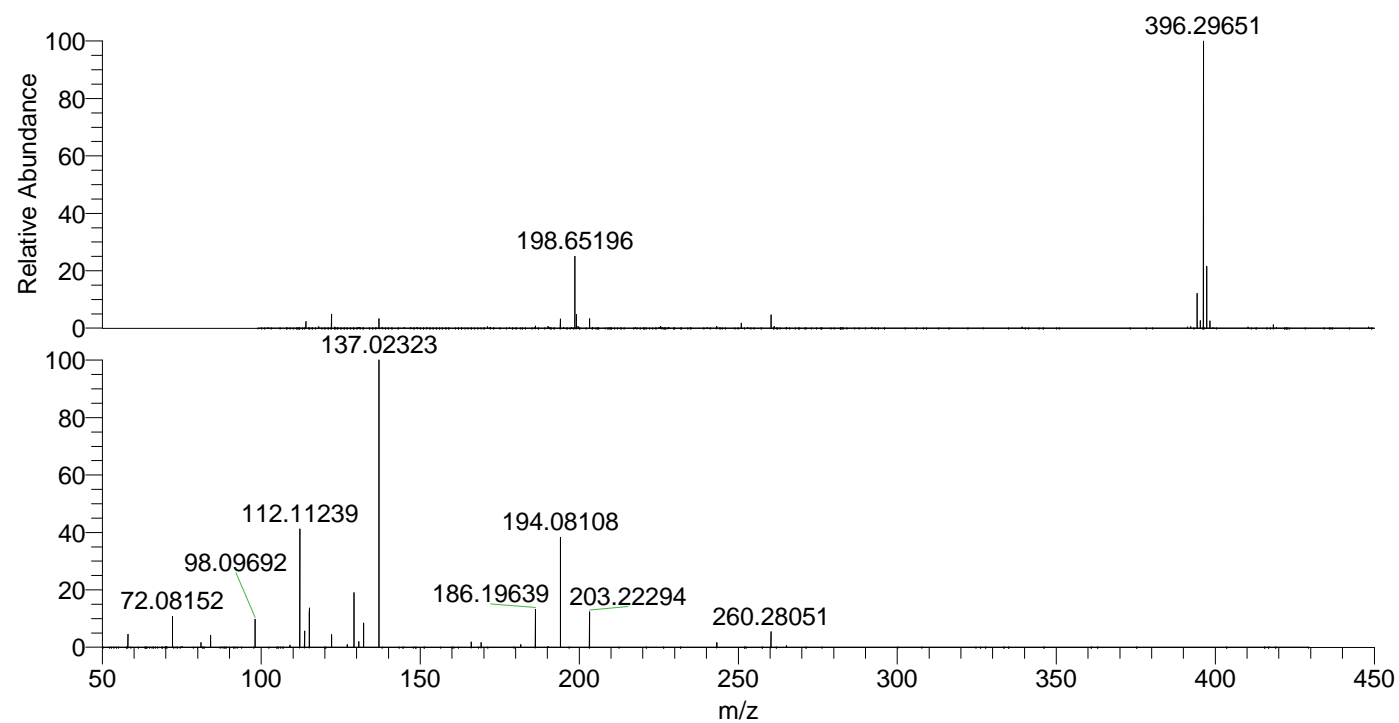
NL: 3.18E7
 Base Peak m/z= 396.29351-396.30143
 F: FTMS + p ESI Full ms MS
 (OH)2-Bz3433

NL: 7.97E6
 Base Peak m/z= 198.65066-198.65464
 F: FTMS + p ESI Full ms MS
 (OH)2-Bz3433

NL: 7.50E6
 m/z= 50.00000-1500.00000 F: FTMS + p
 ESI d Full ms2 198.65@hcd35.00
 [50.00-425.00] MS (OH)2-Bz3433

(OH)2-Bz3433#1956-2001 RT: 4.90-5.01
 F: FTMS + p ESI d Full ms2 198.65@hcd35.00
 m/z= 50.00000-1000.00000

m/z	Intensity	Relative
58.06595	62947.5	4.60
72.08152	146411.0	10.70
81.03405	21946.9	1.60
84.08134	57842.8	4.23
98.09692	133652.1	9.77
109.02861	9908.8	0.72
112.11239	557436.6	40.73
113.61784	79140.1	5.78
115.12326	185477.7	13.55
122.13093	60225.4	4.40
127.03920	13522.9	0.99
129.13875	263651.8	19.27
130.64406	27031.0	1.98
132.14953	114406.2	8.36
137.02323	1368446.9	100.00
166.04985	25744.0	1.88
169.16988	22541.0	1.65
181.62538	12632.9	0.92
186.19639	179061.9	13.09
194.08108	518055.9	37.86
203.22294	167117.1	12.21
243.25386	21433.2	1.57
260.28051	74345.0	5.43
265.15422	8284.3	0.61



NL: 3.16E7
 (OH)2-Bz3433#1975 RT:
 4.95 AV: 1 T: FTMS + p
 ESI Full ms
 [100.00-1500.00]

NL: 1.35E6
 (OH)2-Bz3433#1955-2005
 RT: 4.90-5.01 AV: 9 F:
 FTMS + p ESI d Full ms2
 198.65@hcd35.00
 [50.00-425.00]