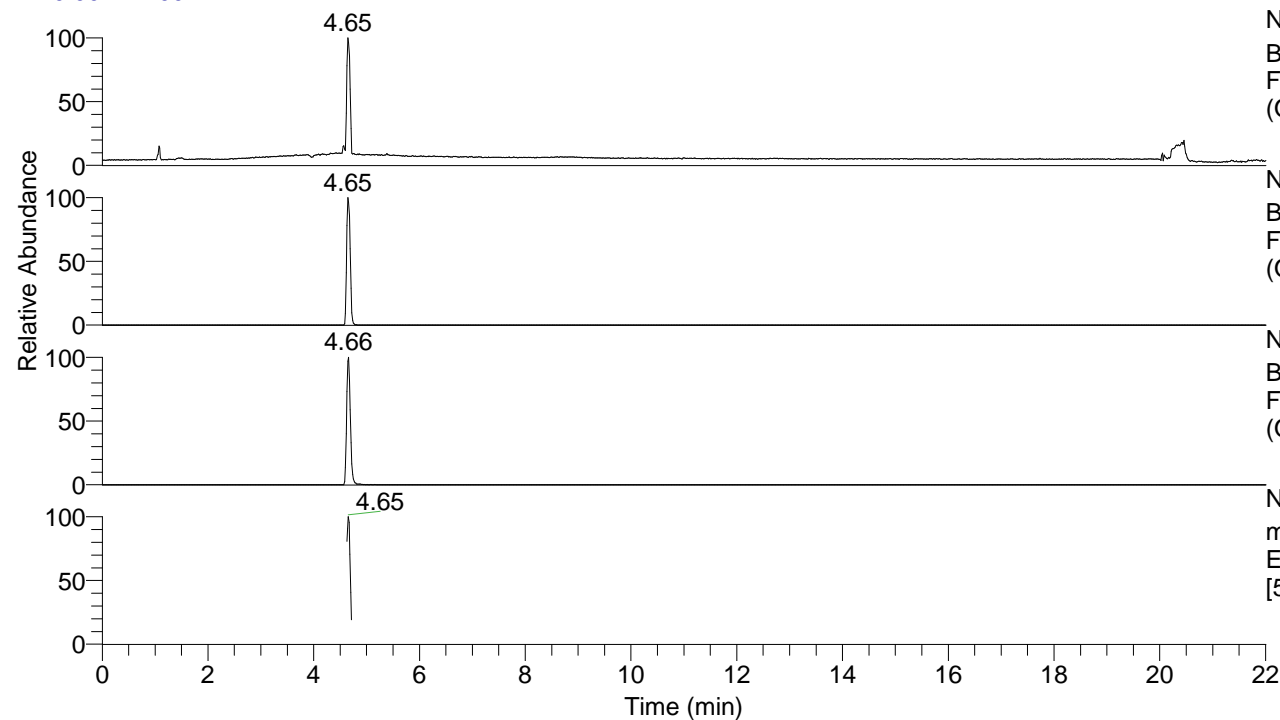


RT: 0.00 - 22.00



NL: 1.65E7
 Base Peak m/z= 50.00000-1500.00000
 F: FTMS + p ESI Full ms MS
 (OH)2-Bz3334

NL: 1.65E7
 Base Peak m/z= 396.29351-396.30143
 F: FTMS + p ESI Full ms MS
 (OH)2-Bz3334

NL: 2.35E6
 Base Peak m/z= 198.65066-198.65464
 F: FTMS + p ESI Full ms MS
 (OH)2-Bz3334

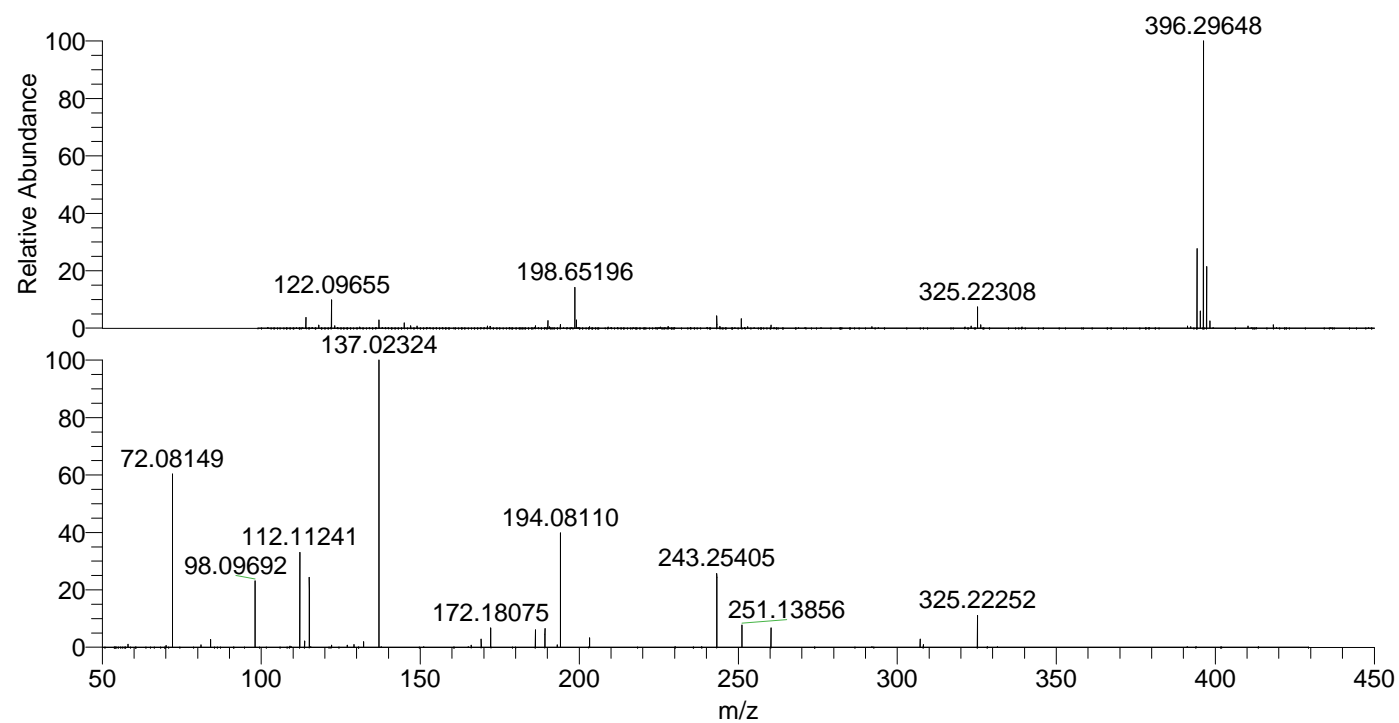
NL: 2.14E6
 m/z= 50.00000-1500.00000 F: FTMS + p
 ESI d Full ms2 198.65@hcd35.00
 [50.00-425.00] MS (OH)2-Bz3334

(OH)2-Bz3334#1848-1883 RT: 4.63-4.72

F: FTMS + p ESI d Full ms2 198.65 ...

m/z= 50.00000-1000.00000

m/z	Intensity	Relative
58.06604	3788.2	1.00
70.06589	2192.2	0.58
72.08149	224221.6	59.22
81.03410	3049.4	0.81
84.08136	10254.7	2.71
98.09692	86028.6	22.72
112.11241	122354.3	32.32
113.61792	8116.2	2.14
115.12327	90305.0	23.85
122.13108	2867.9	0.76
127.03920	2633.6	0.70
129.13877	3529.7	0.93
132.14951	7440.7	1.97
137.02324	378602.7	100.00
166.04991	2724.0	0.72
169.16973	10765.0	2.84
172.18075	25172.7	6.65
186.19658	22658.0	5.98
189.20724	24697.8	6.52
193.09722	3286.3	0.87
194.08110	147846.6	39.05
203.22315	12109.0	3.20
243.25405	97298.2	25.70
251.13856	28721.6	7.59
260.28058	25535.1	6.74
307.21259	10936.5	2.89
308.19751	3363.5	0.89
325.22252	42081.9	11.12



NL: 1.61E7
 (OH)2-Bz3334#1855 RT:
 4.65 AV: 1 T: FTMS + p
 ESI Full ms
 [100.00-1500.00]

NL: 3.71E5
 (OH)2-Bz3334#1840-1884
 RT: 4.63-4.72 AV: 7 F:
 FTMS + p ESI d Full ms2
 198.65@hcd35.00
 [50.00-425.00]