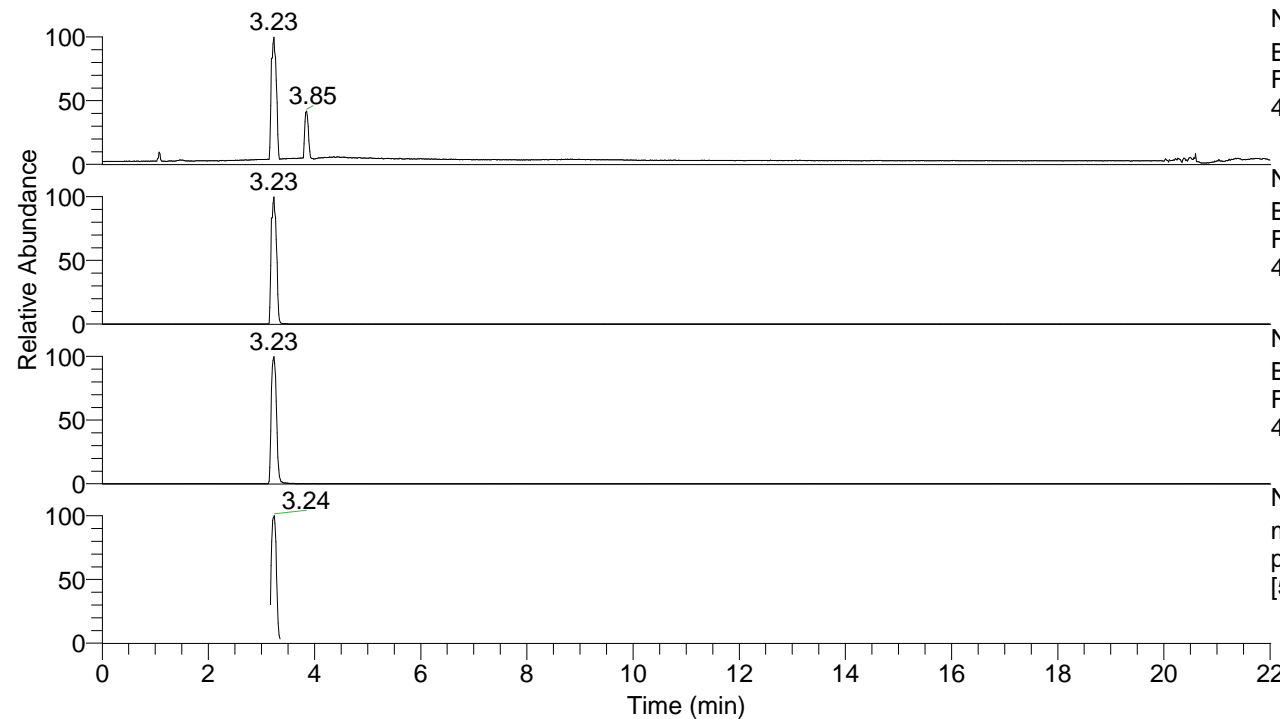


RT: 0.00 - 22.01



NL: 2.87E7
 Base Peak m/z= 50.00000-1500.00000
 F: FTMS + p ESI Full ms MS
 4-OH-Bz3433

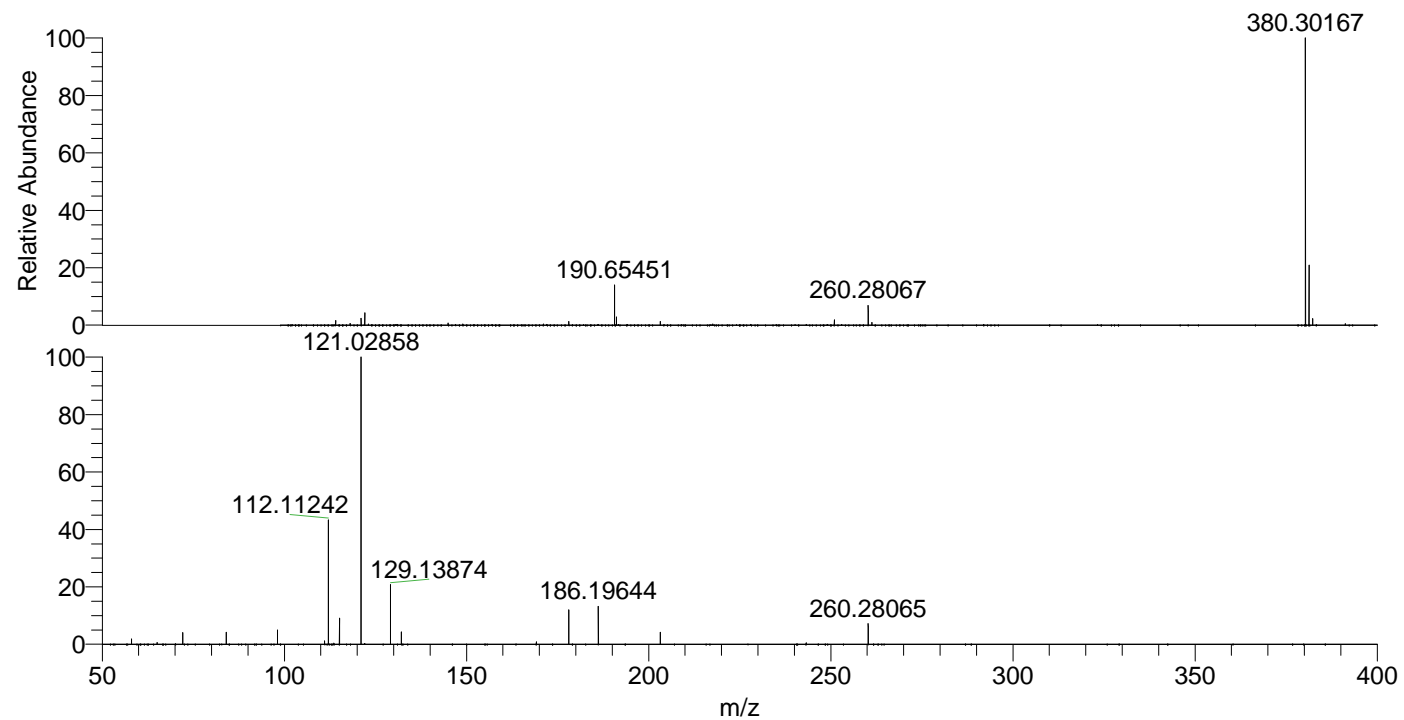
NL: 2.87E7
 Base Peak m/z= 380.29875-380.30635
 F: FTMS + p ESI Full ms MS
 4-OH-Bz3433

NL: 3.93E6
 Base Peak m/z= 190.65328-190.65710
 F: FTMS + p ESI Full ms MS
 4-OH-Bz3433

NL: 4.73E6
 m/z= 50.00000-1500.00000 F: FTMS +
 p ESI d Full ms2 190.65@hcd35.00
 [50.00-405.00] MS 4-OH-Bz3433

4-OH-Bz3433#1270-1317 RT: 3.18-3.30 AV:
 F: FTMS + p ESI d Full ms2 190.65@h ...
 m/z= 50.00000-1000.00000

m/z	Intensity	Relative
58.06596	26771.4	1.82
65.03938	8624.7	0.59
72.08154	58361.7	3.97
84.08132	59722.1	4.06
98.09693	71629.2	4.87
111.04440	16769.2	1.14
112.11242	623680.6	42.38
115.12330	131668.7	8.95
121.02858	1471716.6	100.00
129.13874	309676.8	21.04
132.14958	62458.1	4.24
169.16983	11322.8	0.77
178.08619	171708.8	11.67
186.19644	189476.8	12.87
203.22305	59686.9	4.06
243.25418	7633.8	0.52
260.28065	102889.8	6.99



NL: 2.80E7
 4-OH-Bz3433#1291 RT:
 3.23 AV: 1 T: FTMS + p
 ESI Full ms
 [100.00-1500.00]

NL: 1.43E6
 4-OH-Bz3433#1266-1318
 RT: 3.18-3.30 AV: 9 F:
 FTMS + p ESI d Full ms2
 190.65@hcd35.00
 [50.00-405.00]