

RT: 0.00 - 22.01



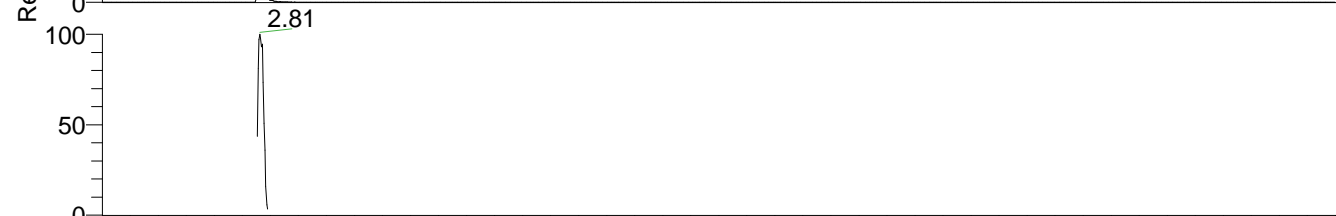
NL: 8.70E6  
 Base Peak m/z=  
 50.00000-1500.00000 F: FTMS +  
 p ESI Full ms [100.00-1500.00]  
 MS Inosine

Inosine#1103-1155 RT: 2.77-2.90 AV: 10  
 F: FTMS + p ESI d Full ms2 269.09@h ...  
 m/z= 50.00000-1000.00000

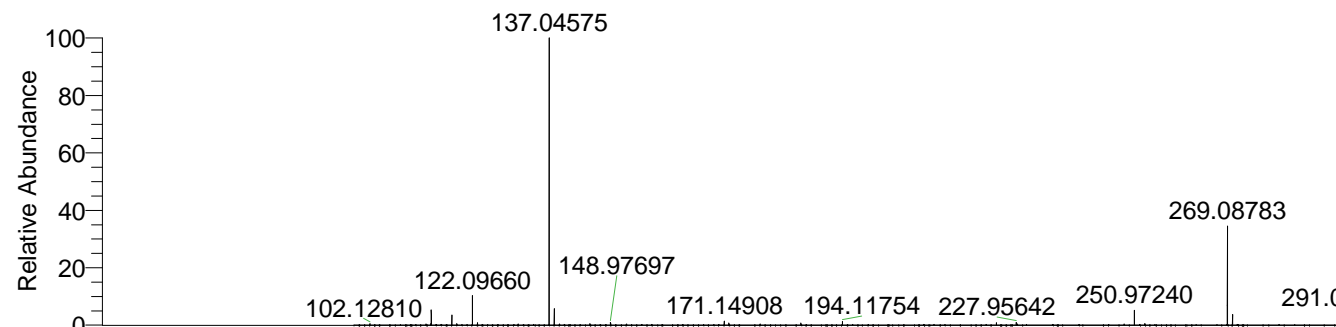
m/z	Intensity	Relative
115.95958	7348.1	0.52
133.96977	28495.4	2.04
137.04577	1400245.1	100.00



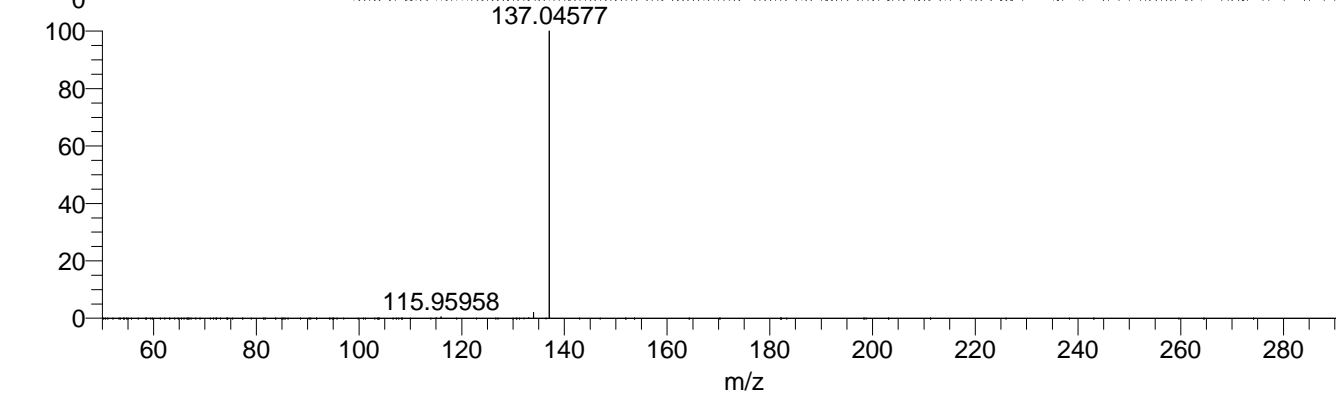
NL: 2.68E6  
 Base Peak m/z=  
 269.08724-269.08994 F: FTMS +  
 p ESI Full ms [100.00-1500.00]  
 MS Inosine



NL: 1.92E6  
 Base Peak m/z=  
 50.00000-1500.00000 F: FTMS +  
 p ESI d Full ms2  
 269.09@hcd35.00 [50.00-290.00]  
 MS Inosine



NL: 7.68E6  
 Inosine#1129 RT: 2.83  
 AV: 1 T: FTMS + p ESI  
 Full ms [100.00-1500.00]



NL: 1.40E6  
 Inosine#1099-1159 RT:  
 2.77-2.90 AV: 10 F:  
 FTMS + p ESI d Full ms2  
 269.09@hcd35.00  
 [50.00-290.00]