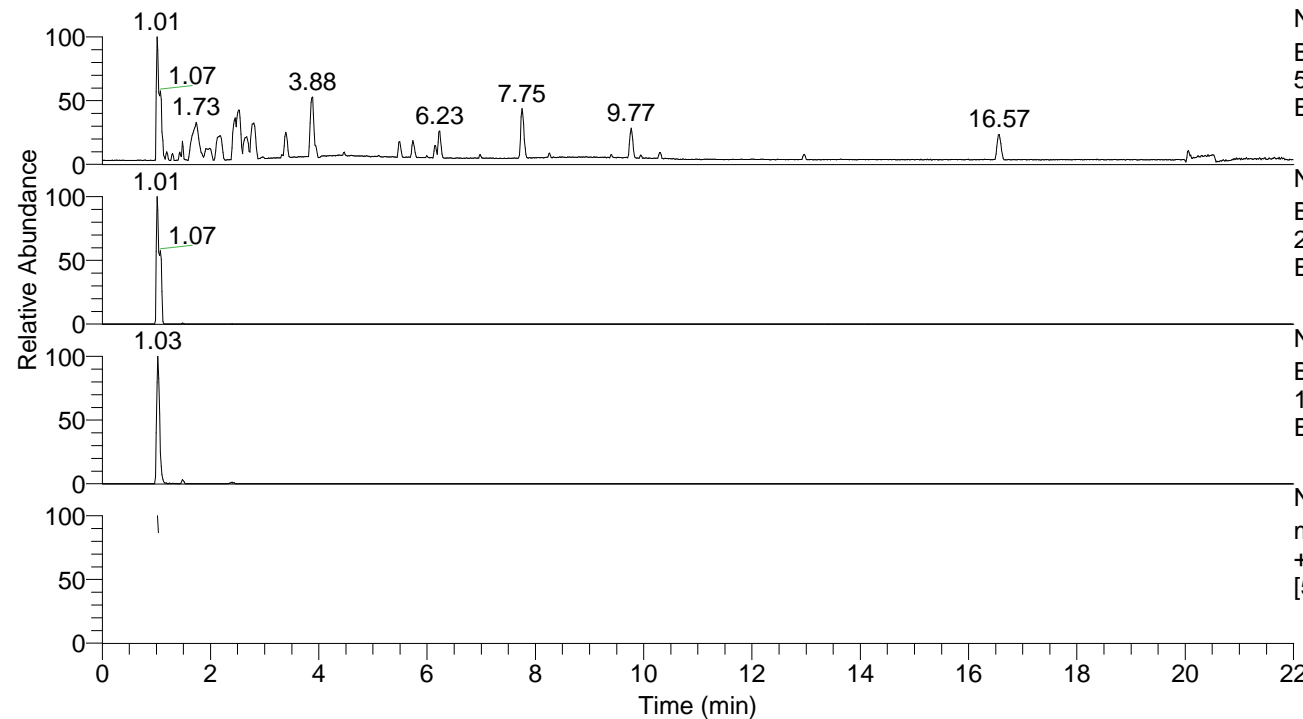


RT: 0.00 - 22.00



NL: 1.81E7
 Base Peak m/z=
 50.00000-1500.00000 F: FTMS + p
 ESI Full ms MS PA3343

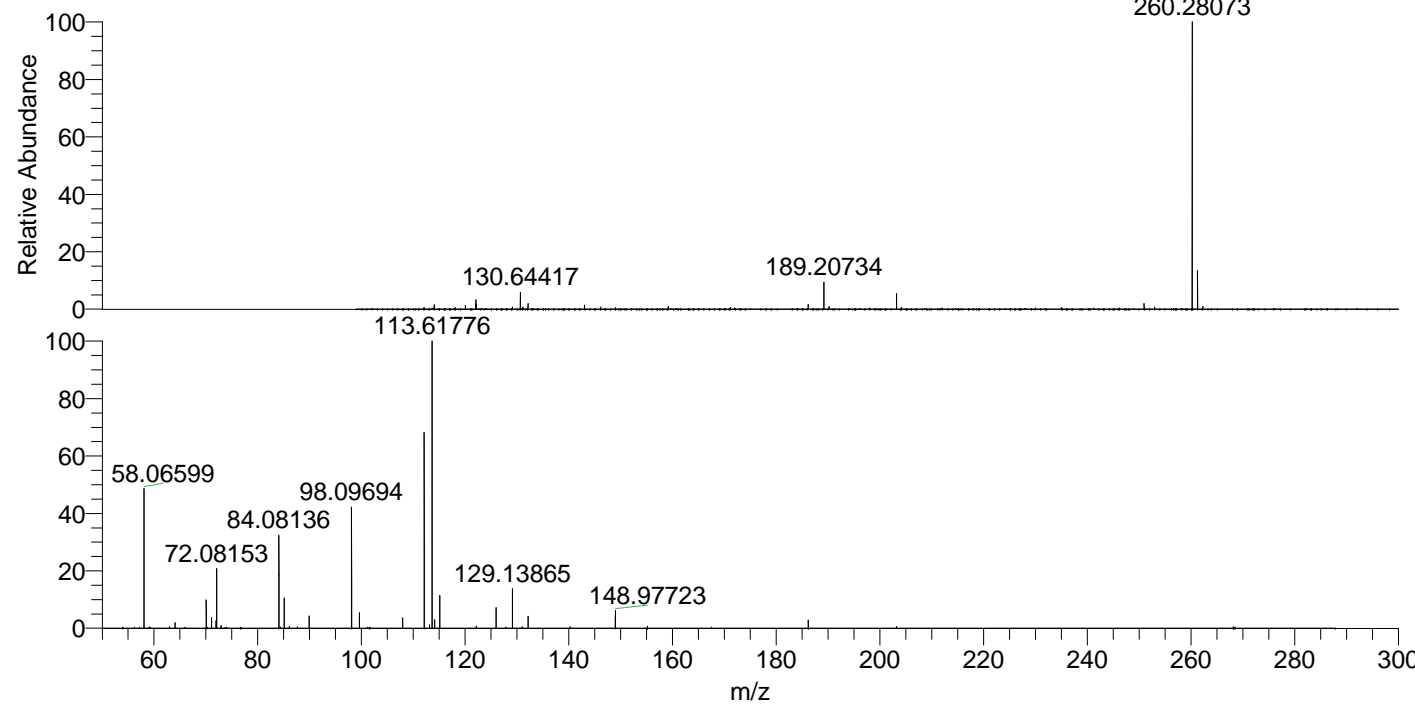
NL: 1.81E7
 Base Peak m/z=
 260.27882-260.28402 F: FTMS + p
 ESI Full ms MS PA3343

NL: 1.32E6
 Base Peak m/z=
 130.64331-130.64593 F: FTMS + p
 ESI Full ms MS PA3343

NL: 1.30E6
 m/z= 50.00000-1500.00000 F: FTMS
 + p ESI d Full ms2 130.64@hcd35.00
 [50.00-285.00] MS PA3343

PA3343#406-414 RT: 1.02-1.04 AV: 2
 F: FTMS + p ESI d Full ms2 130.64 ...
 m/z= 50.00000-1000.00000

m/z	Intensity	Relative
58.06599	137565.4	50.13
64.06583	5198.7	1.89
70.06588	27362.4	9.97
71.07371	10293.9	3.75
71.92997	7272.6	2.65
72.08153	56941.6	20.75
72.93783	2568.2	0.94
84.08136	88716.8	32.33
85.08926	28640.6	10.44
86.09709	1808.7	0.66
89.94035	11541.6	4.21
98.09694	116600.5	42.49
99.60255	15038.6	5.48
107.95093	9990.9	3.64
112.11240	186547.1	67.97
113.11551	3405.7	1.24
113.61776	274442.1	100.00
114.11929	8082.0	2.94
115.12334	31146.3	11.35
115.13091	1672.2	0.61
122.13136	1894.9	0.69
125.96113	19658.8	7.16
129.13865	38379.2	13.98
130.96672	1465.2	0.53
132.14977	11473.6	4.18
148.97723	16850.5	6.14
155.15413	2085.7	0.76
186.19666	7636.6	2.78
203.22336	1621.6	0.59



NL: 1.79E7
 PA3343#403 RT: 1.01
 AV: 1 T: FTMS + p ESI
 Full ms [100.00-1500.00]

NL: 2.72E5
 PA3343#396-422 RT:
 1.02-1.04 AV: 2 F:
 FTMS + p ESI d Full ms2
 130.64@hcd35.00
 [50.00-285.00]