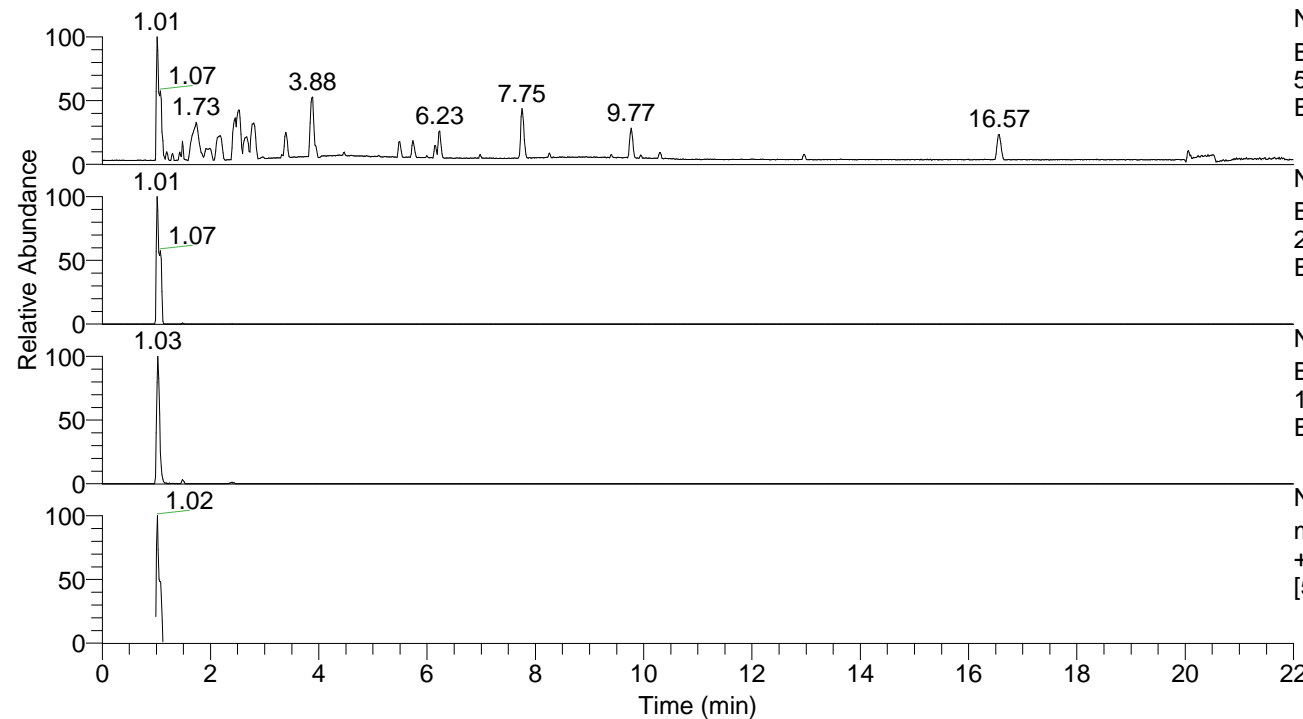


RT: 0.00 - 22.00



NL: 1.81E7
 Base Peak m/z=
 50.00000-1500.00000 F: FTMS + p
 ESI Full ms MS PA3343

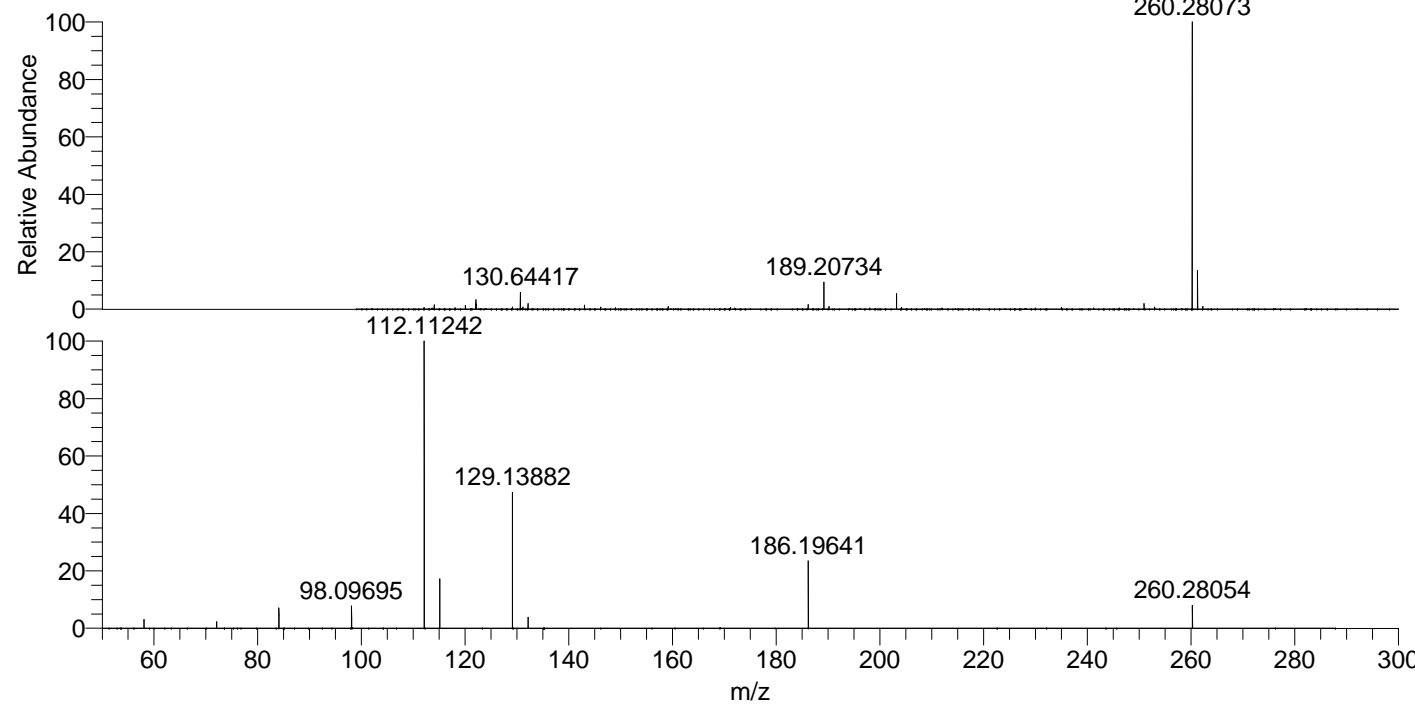
NL: 1.81E7
 Base Peak m/z=
 260.27882-260.28402 F: FTMS + p
 ESI Full ms MS PA3343

NL: 1.32E6
 Base Peak m/z=
 130.64331-130.64593 F: FTMS + p
 ESI Full ms MS PA3343

NL: 1.25E7
 m/z= 50.00000-1500.00000 F: FTMS
 + p ESI d Full ms2 260.28@hcd35.00
 [50.00-285.00] MS PA3343

PA3343#394-416 RT: 0.99-1.05 AV: 5
 F: FTMS + p ESI d Full ms2 260.28@h ...
 m/z= 50.00000-1000.00000

m/z	Intensity	Relative
58.06600	104336.7	3.10
72.08153	75494.3	2.24
84.08139	247676.5	7.36
98.09695	261545.0	7.77
112.11242	3367136.8	100.00
115.12328	580636.3	17.24
129.13882	1611550.5	47.86
132.14952	132145.3	3.92
186.19641	791892.8	23.52
260.28054	274631.4	8.16



NL: 1.79E7
 PA3343#403 RT: 1.01
 AV: 1 T: FTMS + p ESI
 Full ms [100.00-1500.00]

NL: 3.37E6
 PA3343#392-416 RT:
 0.99-1.05 AV: 5 F:
 FTMS + p ESI d Full ms2
 260.28@hcd35.00
 [50.00-285.00]