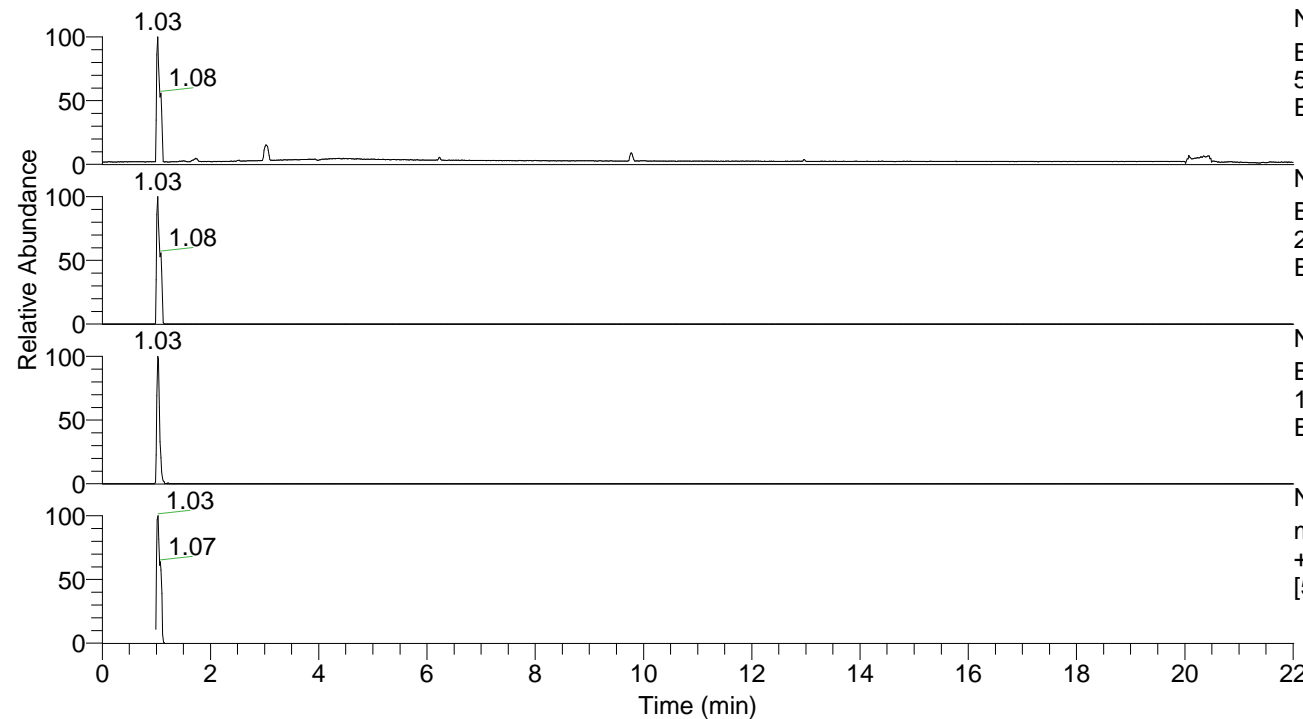


RT: 0.00 - 22.01



NL: 3.52E7  
 Base Peak m/z=  
 50.00000-1500.00000 F: FTMS + p  
 ESI Full ms MS PA3334

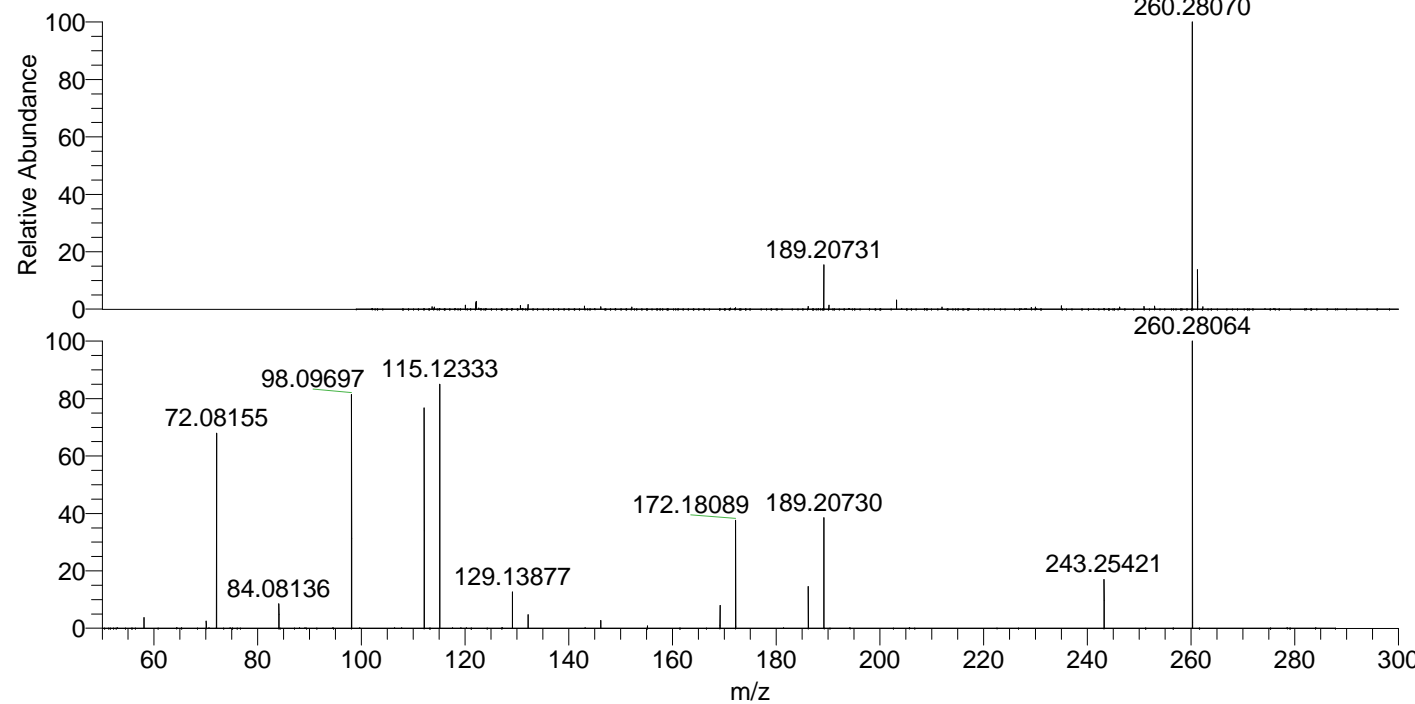
NL: 3.52E7  
 Base Peak m/z=  
 260.27882-260.28402 F: FTMS + p  
 ESI Full ms MS PA3334

NL: 4.40E5  
 Base Peak m/z=  
 130.64331-130.64593 F: FTMS + p  
 ESI Full ms MS PA3334

NL: 1.99E7  
 m/z= 50.00000-1500.00000 F: FTMS  
 + p ESI d Full ms2 260.28@hcd35.00  
 [50.00-285.00] MS PA3334

PA3334#394-422 RT: 0.99-1.06 AV: 6  
 F: FTMS + p ESI d Full ms2 260.28@h ...  
 m/z= 50.00000-1000.00000

m/z	Intensity	Relative
58.06594	87700.6	3.82
70.06593	57422.3	2.50
72.08155	1558093.8	67.80
72.08496	15017.0	0.65
84.08136	197327.2	8.59
98.09697	1880309.9	81.82
112.11247	1754554.4	76.35
115.12333	1945323.3	84.65
129.13877	297386.8	12.94
132.14961	107808.7	4.69
146.16532	64078.0	2.79
155.15419	20590.4	0.90
169.16991	183013.0	7.96
172.18089	867417.5	37.75
186.19648	332009.4	14.45
189.20730	888474.1	38.66
243.25421	391483.7	17.04
260.28064	2298048.5	100.00



NL: 3.39E7  
 PA3334#409 RT: 1.03  
 AV: 1 T: FTMS + p ESI  
 Full ms [100.00-1500.00]

NL: 2.28E6  
 PA3334#394-423 RT:  
 0.99-1.06 AV: 6 F:  
 FTMS + p ESI d Full ms2  
 260.28@hcd35.00  
 [50.00-285.00]