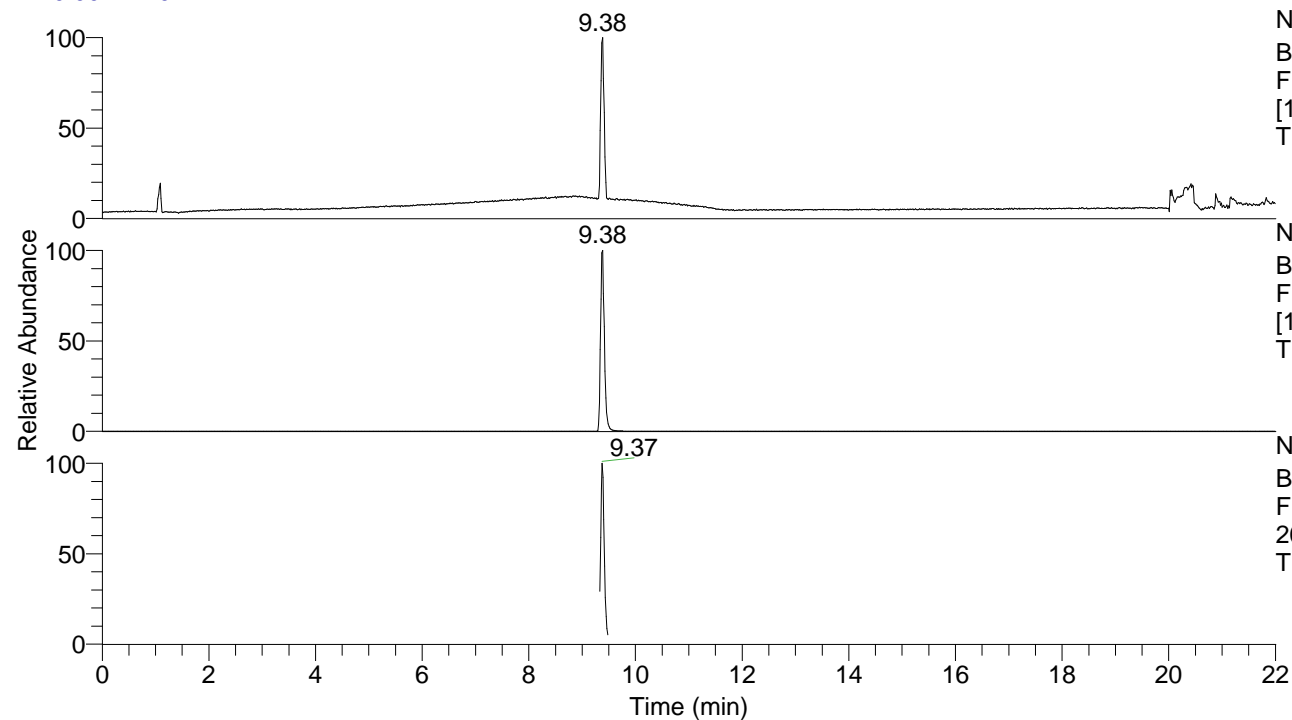


RT: 0.00 - 22.01



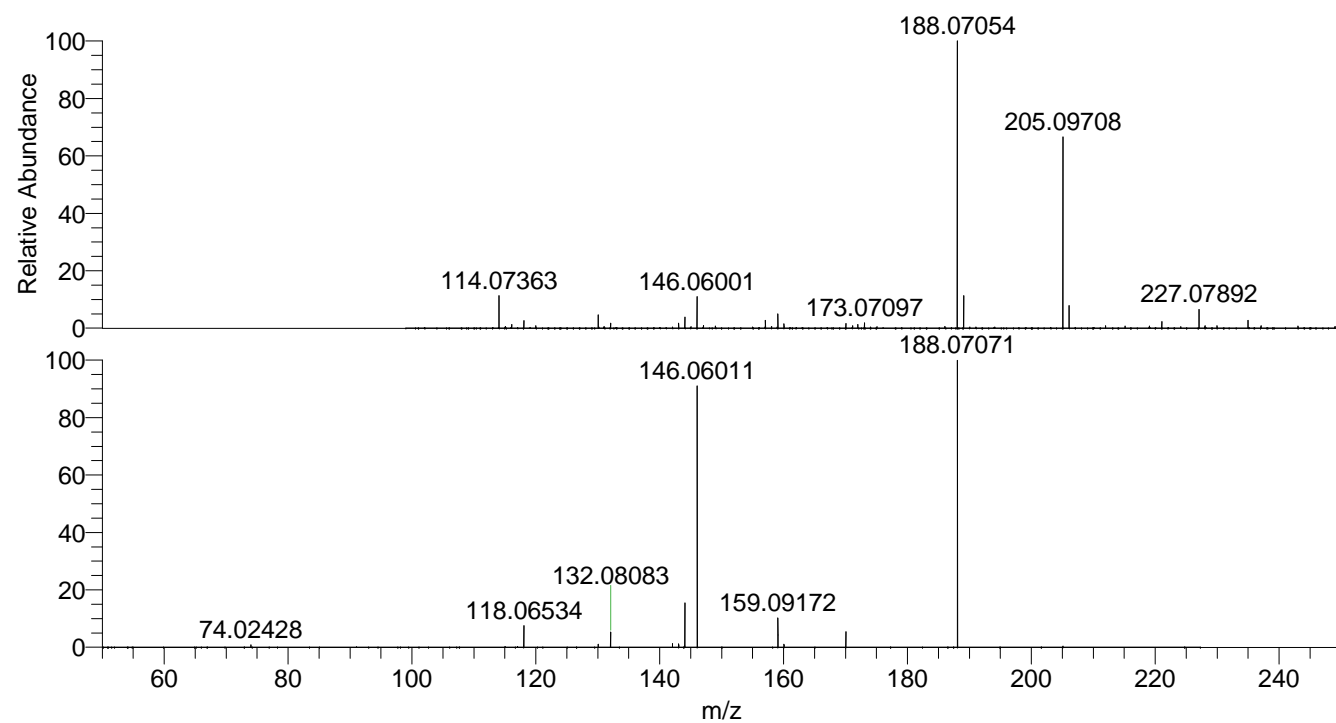
NL: 1.49E7
 Base Peak m/z= 50.00000-1500.00000
 F: FTMS + p ESI Full ms
 [100.00-1500.00] MS
 Tryptophan_170816210636

NL: 1.04E7
 Base Peak m/z= 205.09667-205.09873
 F: FTMS + p ESI Full ms
 [100.00-1500.00] MS
 Tryptophan_170816210636

NL: 4.38E6
 Base Peak m/z= 50.00000-1500.00000
 F: FTMS + p ESI d Full ms2
 205.10@hcd35.00 [50.00-225.00] MS
 Tryptophan_170816210636

Tryptophan_170816210636#3718-3753 RT:
 F: FTMS + p ESI d Full ms2 205.10@h ...
 m/z= 50.00000-1000.00000

m/z	Intensity	Relative
74.02428	25227.3	0.87
118.06534	221991.5	7.65
130.06526	31901.8	1.10
132.08083	155658.5	5.36
142.06517	37116.6	1.28
143.07281	33754.4	1.16
144.04424	15870.8	0.55
144.08084	452844.1	15.60
146.06011	2649348.0	91.29
159.09172	291436.6	10.04
160.07570	29883.6	1.03
170.06002	155560.3	5.36
188.07071	2902167.3	100.00



NL: 1.49E7
 Tryptophan_170816210636#3
 739 RT: 9.38 AV: 1 T: FTMS
 + p ESI Full ms
 [100.00-1500.00]

NL: 2.86E6
 Tryptophan_170816210636#3
 717-3758 RT: 9.33-9.42 AV:
 7 F: FTMS + p ESI d Full ms2
 205.10@hcd35.00
 [50.00-225.00]