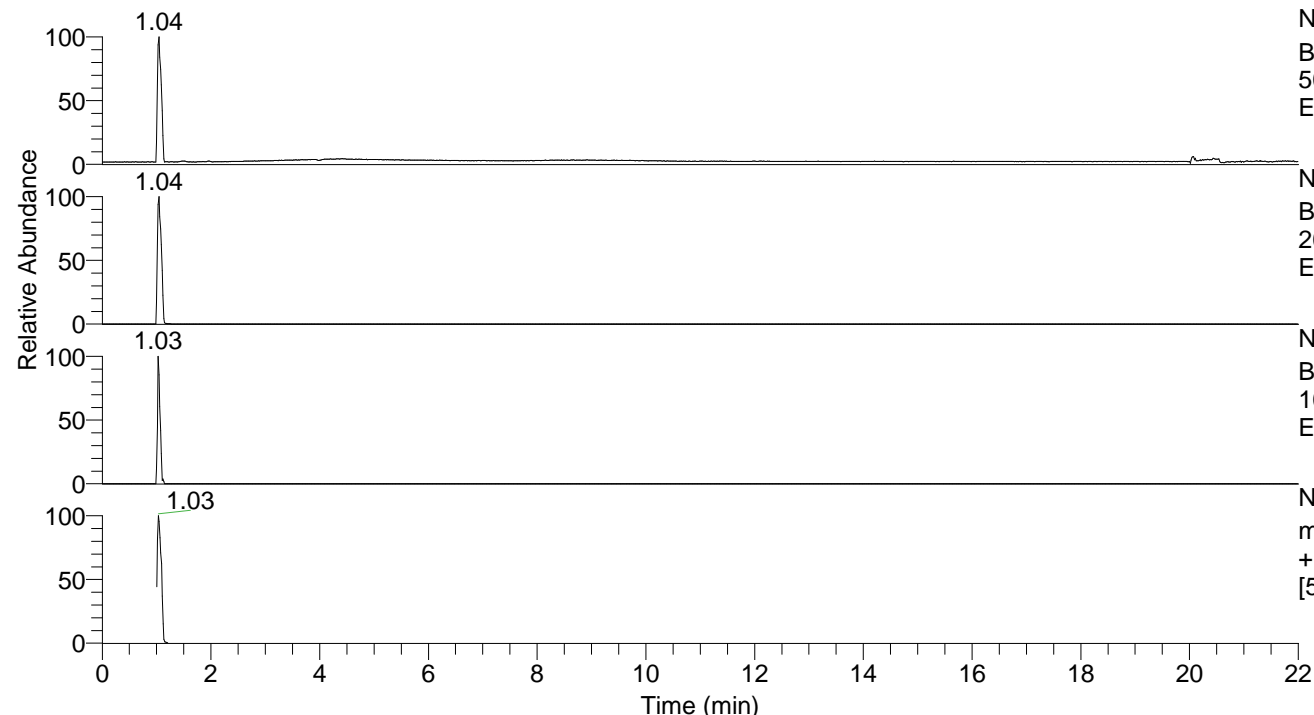


RT: 0.00 - 22.00



NL: 2.90E7
 Base Peak m/z=
 50.00000-1500.00000 F: FTMS + p
 ESI Full ms MS Pa343

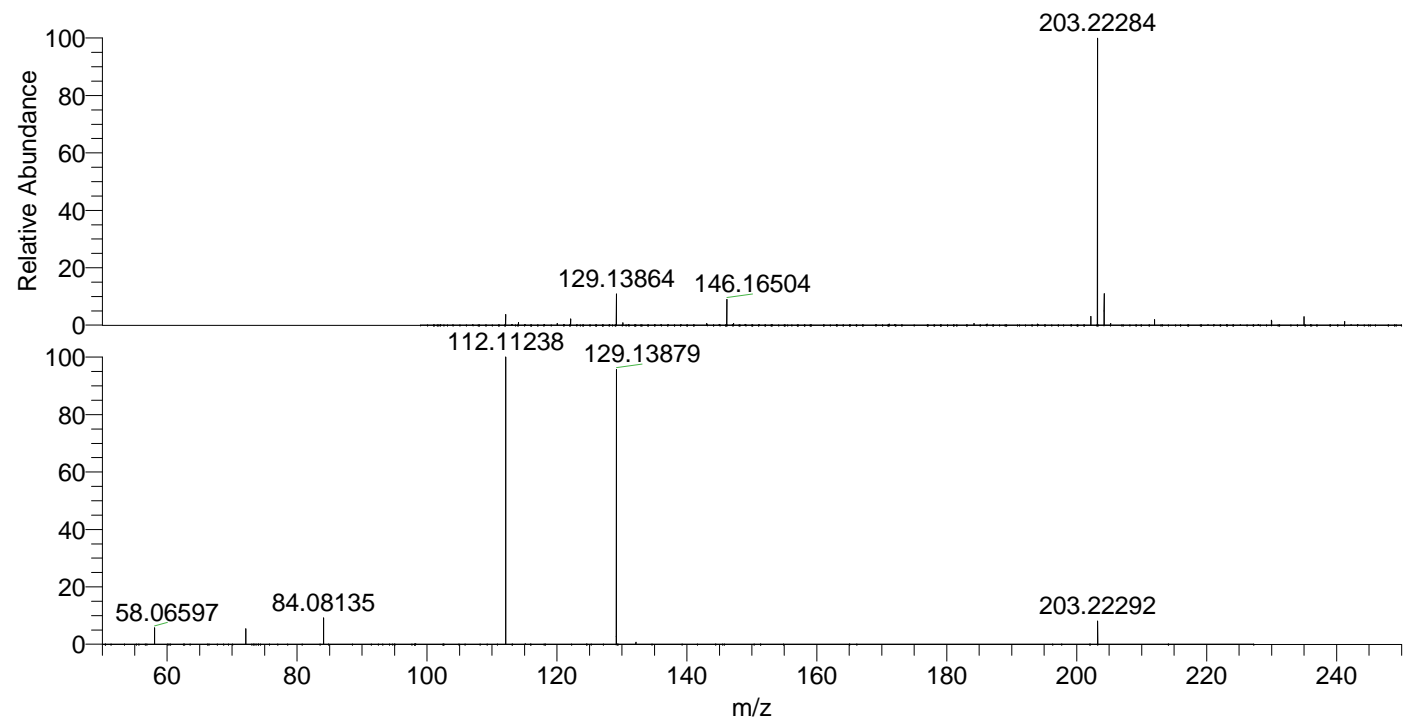
NL: 2.90E7
 Base Peak m/z=
 203.22154-203.22560 F: FTMS + p
 ESI Full ms MS Pa343

NL: 6.34E4
 Base Peak m/z=
 102.11468-102.11672 F: FTMS + p
 ESI Full ms MS Pa343

NL: 2.10E7
 m/z= 50.00000-1500.00000 F: FTMS
 + p ESI d Full ms2 203.22@hcd35.00
 [50.00-225.00] MS Pa343

Pa343#400-446 RT: 1.01-1.12 AV: 9
 F: FTMS + p ESI d Full ms2 203.22@h ...
 m/z= 50.00000-1000.00000

m/z	Intensity	Relative
58.06597	330265.4	5.84
72.08149	305772.0	5.41
84.08135	538697.3	9.53
112.11238	5650809.0	100.00
129.13879	5459332.5	96.61
132.14951	38772.1	0.69
203.22292	455224.7	8.06



NL: 2.87E7
 Pa343#415 RT: 1.04
 AV: 1 T: FTMS + p ESI
 Full lock ms
 [100.00-1500.00]

NL: 5.65E6
 Pa343#397-446 RT:
 1.01-1.12 AV: 9 F:
 FTMS + p ESI d Full
 ms2 203.22@hcd35.00
 [50.00-225.00]