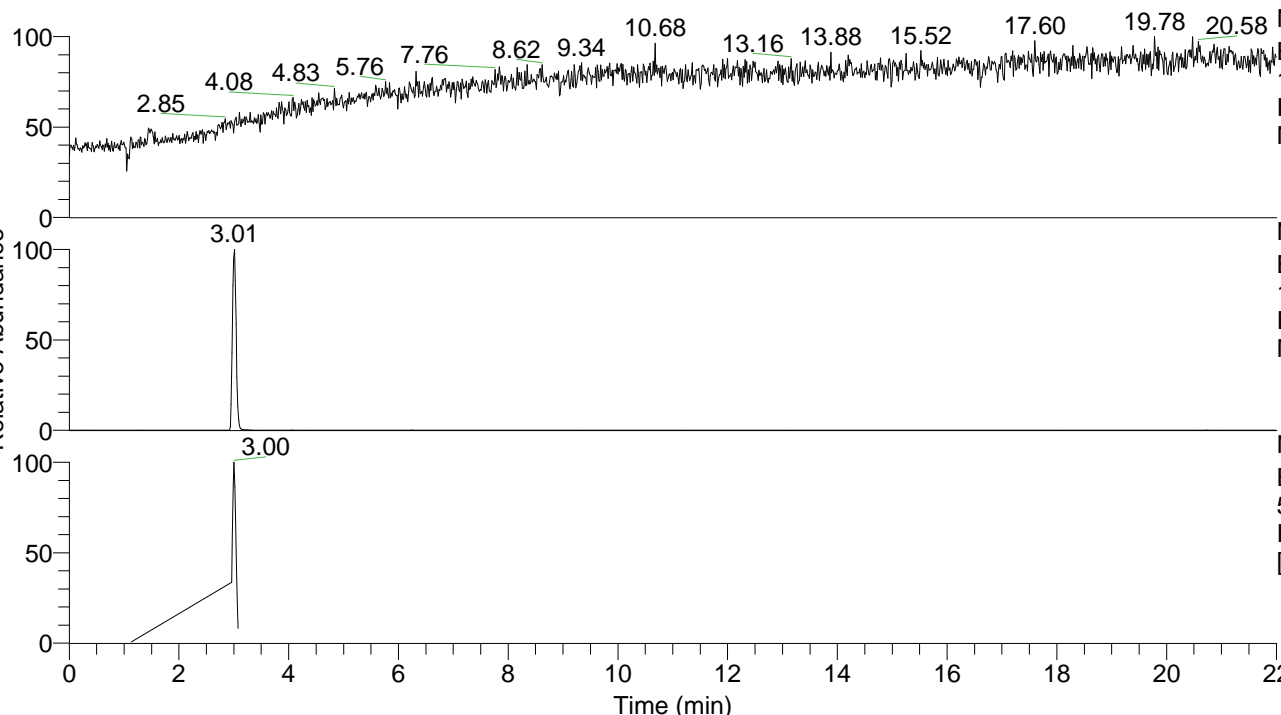


RT: 0.00 - 22.01



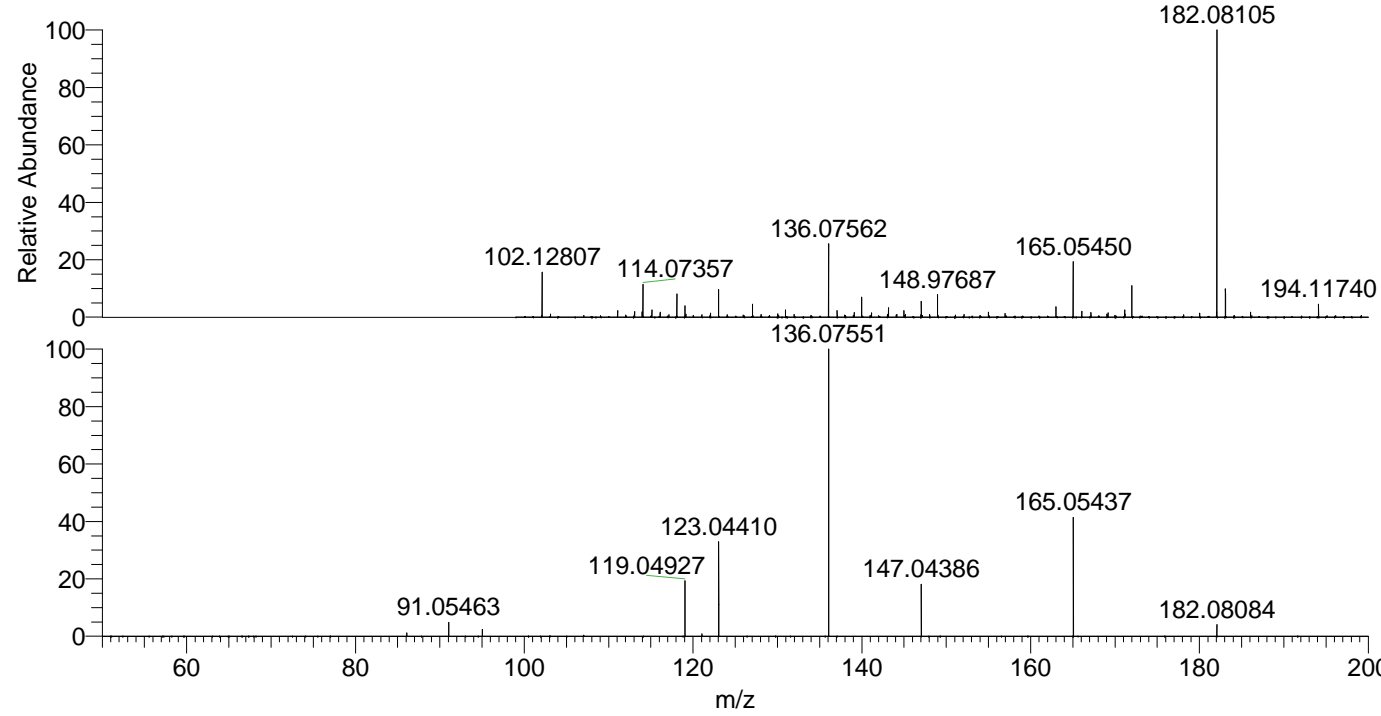
NL: 7.94E6
 Base Peak m/z=
 100.00000-1500.00000 F: FTMS + p
 ESI Full ms [100.0000-1500.0000]
 MS Tyrosine

NL: 3.90E6
 Base Peak m/z=
 182.07990-182.08354 F: FTMS + p
 ESI Full ms [100.0000-1500.0000]
 MS Tyrosine

NL: 1.42E6
 Base Peak m/z=
 50.00000-1500.00000 F: FTMS + p
 ESI d Full ms2 182.0397@hcd35.00
 [50.0000-205.0000] MS Tyrosine

Tyrosine#1151-1184 RT: 2.96-3.05 AV: 7
 F: FTMS + p ESI d Full ms2 182.04 ...
 m/z= 50.00000-1000.00000

m/z	Intensity	Relative
86.09690	10879.9	1.20
91.05463	43838.2	4.83
95.04957	21031.1	2.32
119.04927	172615.0	19.03
121.06478	7139.1	0.79
123.04410	305575.2	33.70
136.07551	906869.8	100.00
147.04386	165889.1	18.29
165.05437	377259.4	41.60
182.08084	36511.1	4.03



NL: 3.81E6
 Tyrosine#1170 RT: 3.01
 AV: 1 T: FTMS + p ESI Full
 ms [100.0000-1500.0000]

NL: 8.93E5
 Tyrosine#1149-1185 RT:
 2.96-3.05 AV: 7 F: FTMS +
 p ESI d Full ms2
 182.0397@hcd35.00
 [50.0000-205.0000]