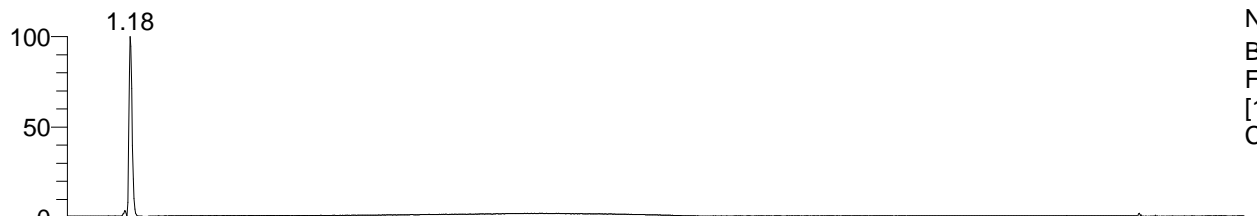


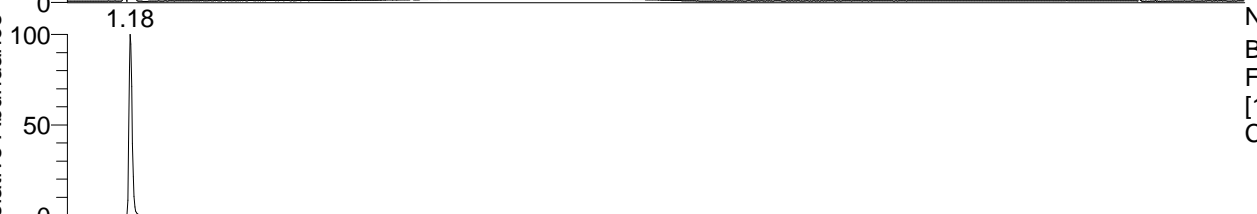
RT: 0.00 - 22.01



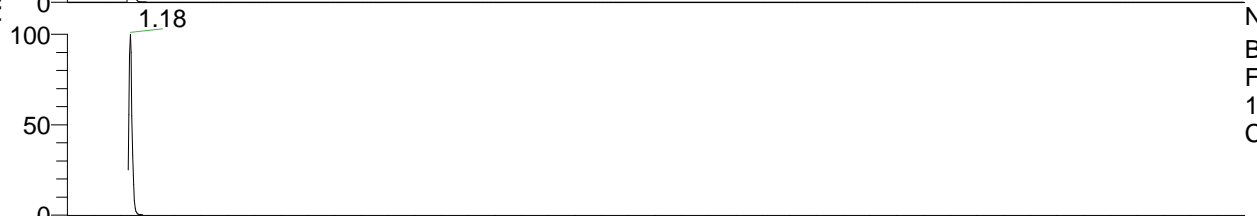
NL: 7.72E7
 Base Peak m/z= 50.00000-1500.00000
 F: FTMS + p ESI Full ms
 [100.00-1500.00] MS
 Carnitine_170816160703

Carnitine_170816160703#454-488 RT:
 F: FTMS + p ESI d Full ms2 162.11@hc ...
 m/z= 50.00000-1000.00000

m/z	Intensity	Relative
60.08165	3097752.3	14.29
85.02908	908027.7	4.19
102.09182	1149899.0	5.30
103.03946	4715862.0	21.75
162.11252	21684600.0	100.00



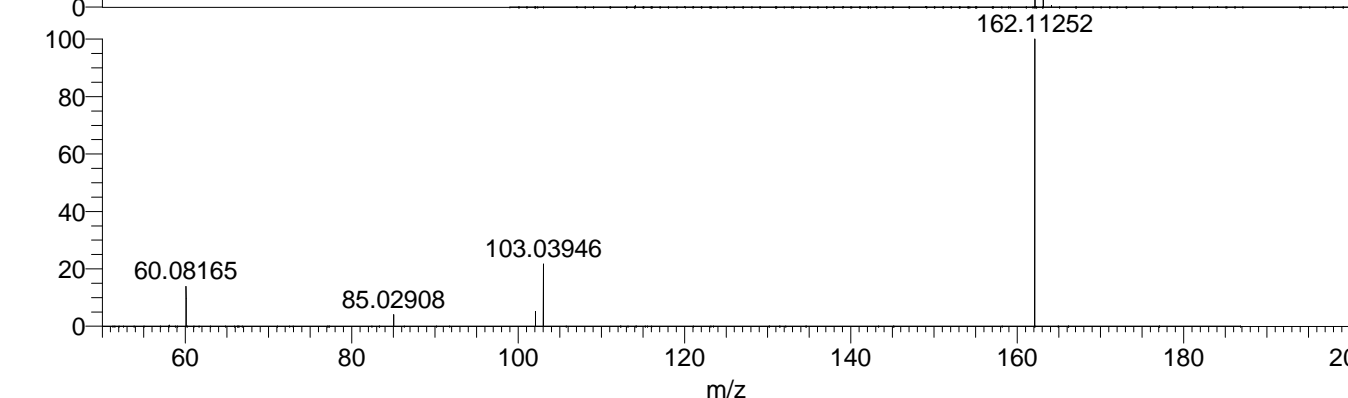
NL: 7.72E7
 Base Peak m/z= 162.11220-162.11382
 F: FTMS + p ESI Full ms
 [100.00-1500.00] MS
 Carnitine_170816160703



NL: 3.63E7
 Base Peak m/z= 50.00000-1500.00000
 F: FTMS + p ESI d Full ms2
 162.11@hcd35.00 [50.00-185.00] MS
 Carnitine_170816160703



NL: 7.51E7
 Carnitine_170816160703#469
 RT: 1.18 AV: 1 T: FTMS +
 p ESI Full lock ms
 [100.00-1500.00]



NL: 2.17E7
 Carnitine_170816160703#450
 -492 RT: 1.14-1.22 AV: 7 F:
 FTMS + p ESI d Full ms2
 162.11@hcd35.00
 [50.00-185.00]