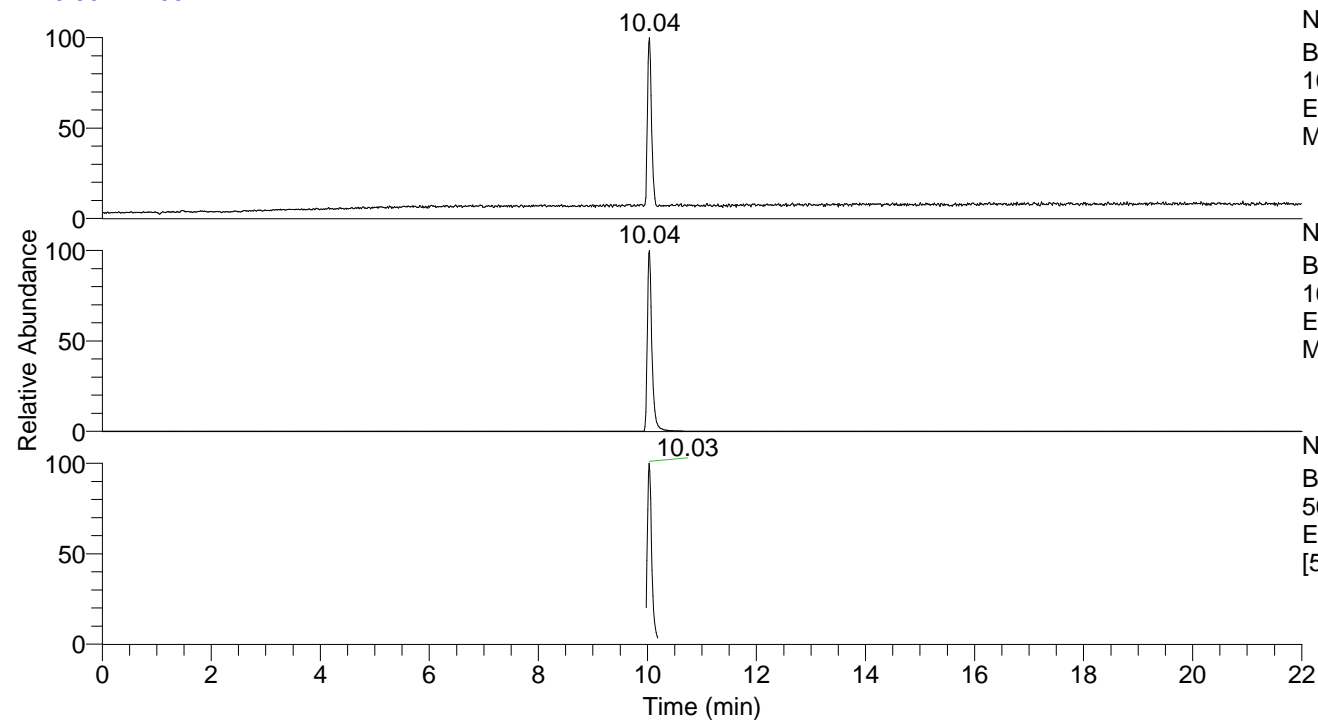


RT: 0.00 - 22.00



Tryptamine#3950-4034 RT: 9.98-10.17 AV:
 F: FTMS + p ESI d Full ms2 161.1100 ...
 m/z= 50.00000-1000.00000

m/z	Intensity	Relative
117.07006	31655.2	0.53
144.08068	5942961.5	100.00

