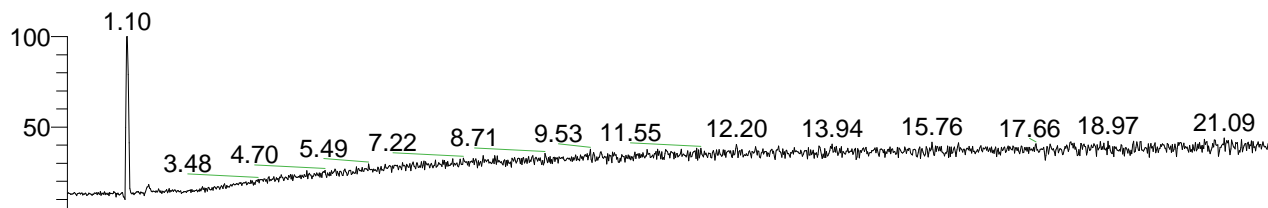


RT: 0.00 - 22.00



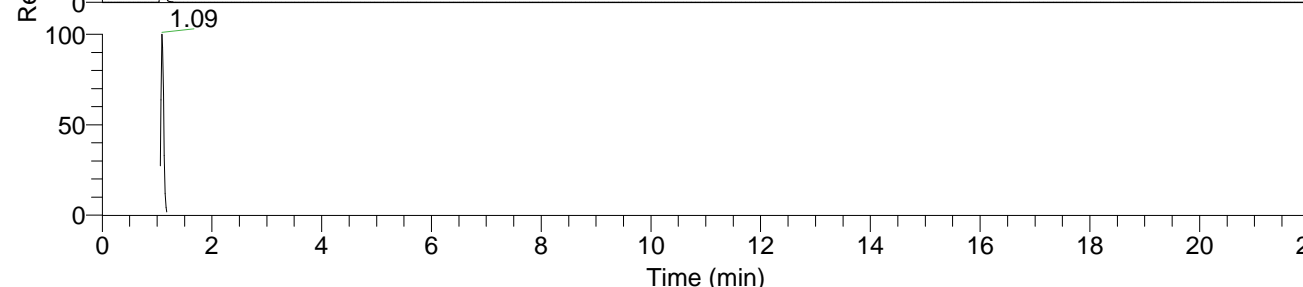
NL: 1.82E7
 Base Peak m/z=
 100.00000-1500.00000 F: FTMS + p
 ESI Full ms [100.0000-1500.0000]
 MS Histidin

Histidin#402-442 RT: 1.06-1.16 AV: 8
 F: FTMS + p ESI d Full ms2 156.0800 ...
 m/z= 50.00000-1000.00000

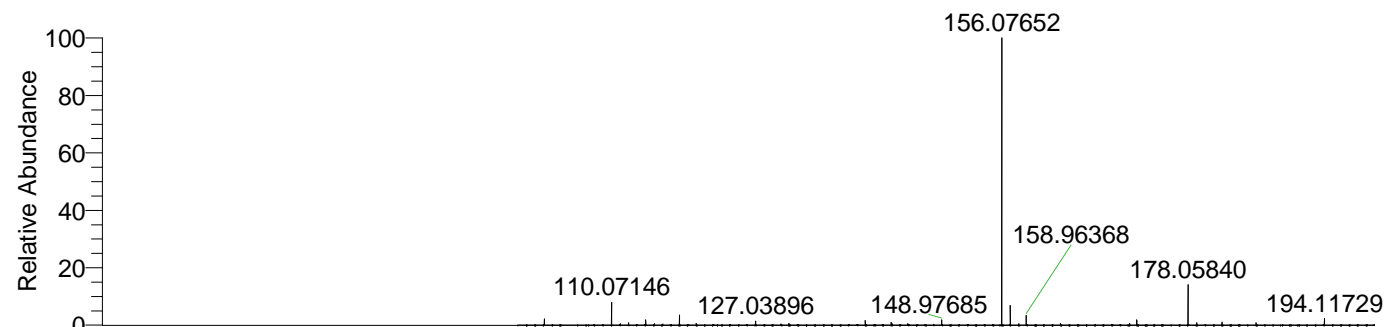
m/z	Intensity	Relative
82.05308	28191.0	0.74
83.06088	103562.3	2.72
93.04509	64506.8	1.69
95.06077	244348.2	6.42
110.07155	3806108.3	100.00
156.07669	976201.4	25.65



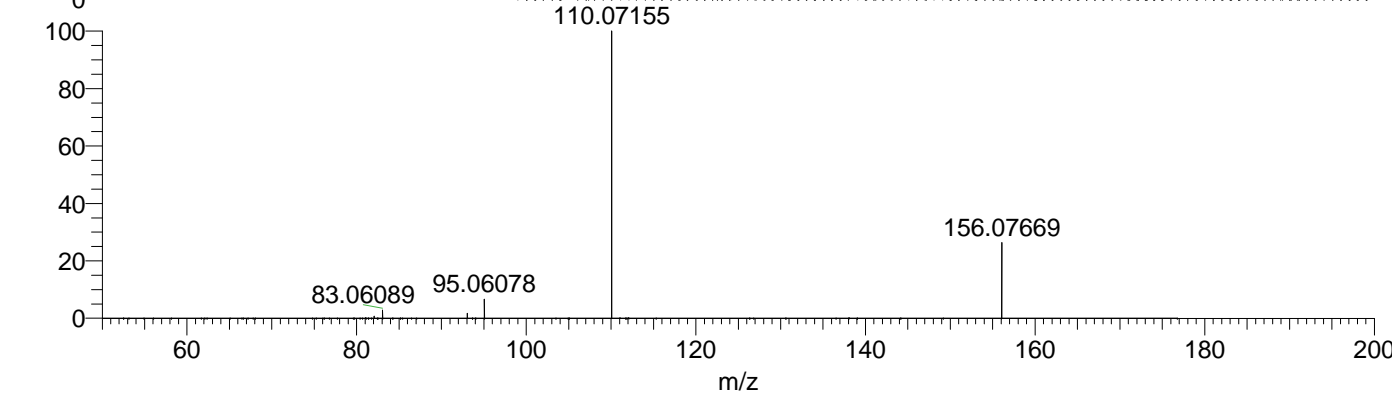
NL: 1.82E7
 Base Peak m/z=
 156.07574-156.07886 F: FTMS + p
 ESI Full ms [100.0000-1500.0000]
 MS Histidin



NL: 8.04E6
 Base Peak m/z=
 50.00000-1500.00000 F: FTMS + p
 ESI d Full ms2 156.0765@hcd35.00
 [50.0000-175.0000] MS Histidin



NL: 1.73E7
 Histidin#417 RT: 1.10 AV:
 1 T: FTMS + p ESI Full ms
 [100.0000-1500.0000]



NL: 4.16E6
 Histidin#402-438 RT:
 1.06-1.15 AV: 7 F: FTMS
 + p ESI d Full ms2
 156.0765@hcd35.00
 [50.0000-175.0000]