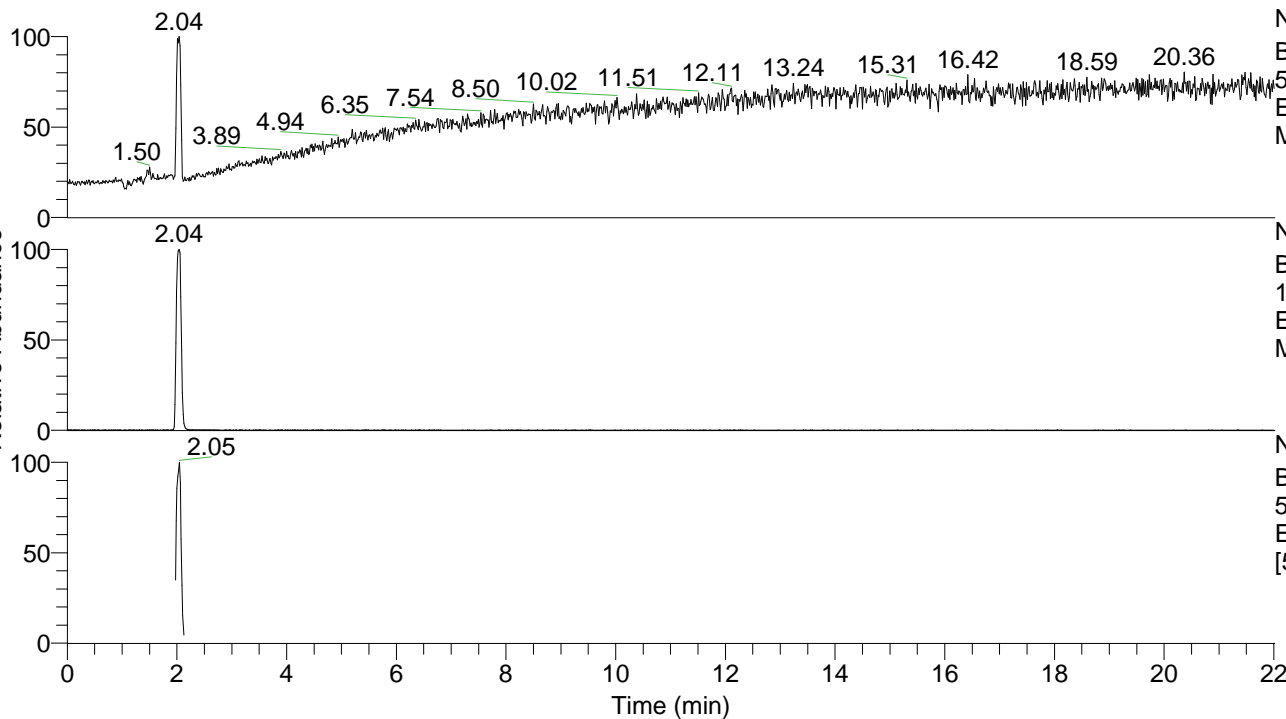


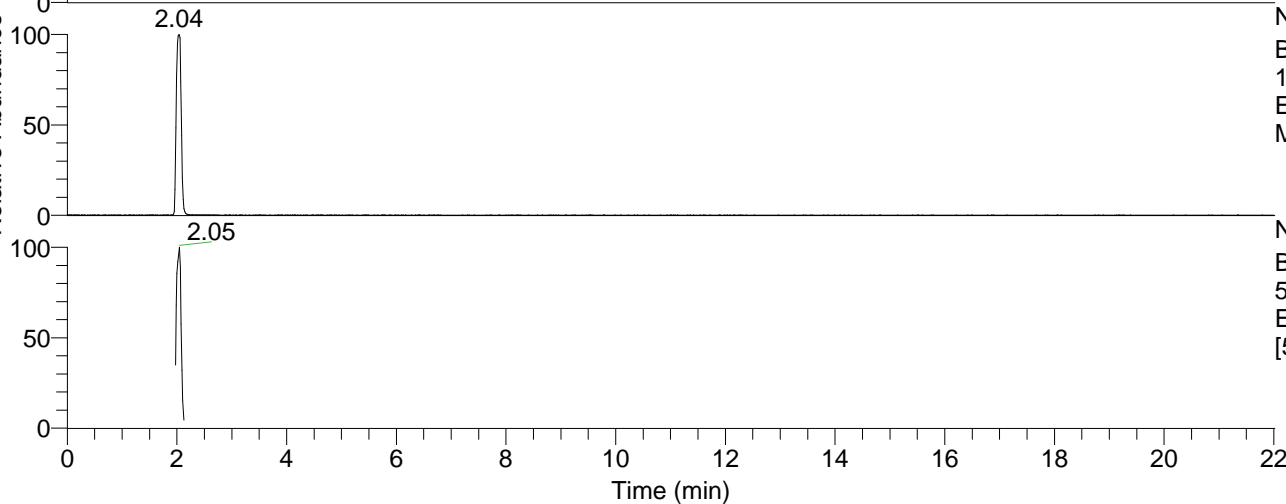
RT: 0.00 - 22.01



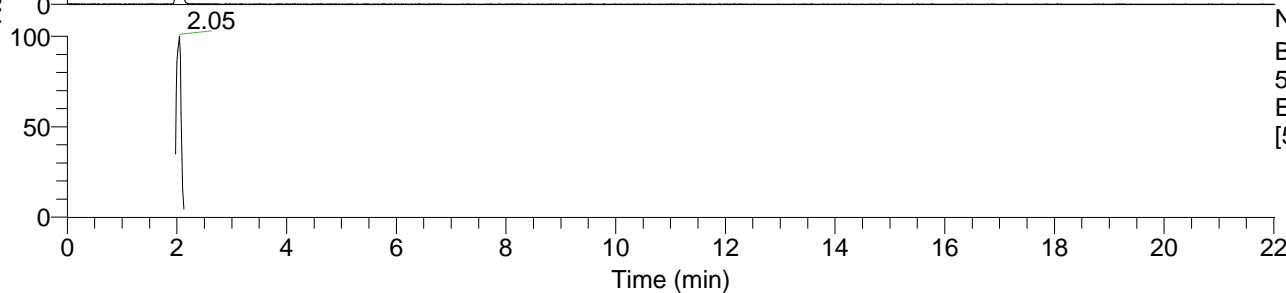
NL: 9.58E6
 Base Peak m/z=
 50.00000-1500.00000 F: FTMS + p
 ESI Full ms [100.0000-1500.0000]
 MS Dopamine

Dopamine#770-816 RT: 1.97-2.09 AV: 9
 F: FTMS + p ESI d Full ms2 154.0900 ...
 m/z= 50.00000-1500.00000

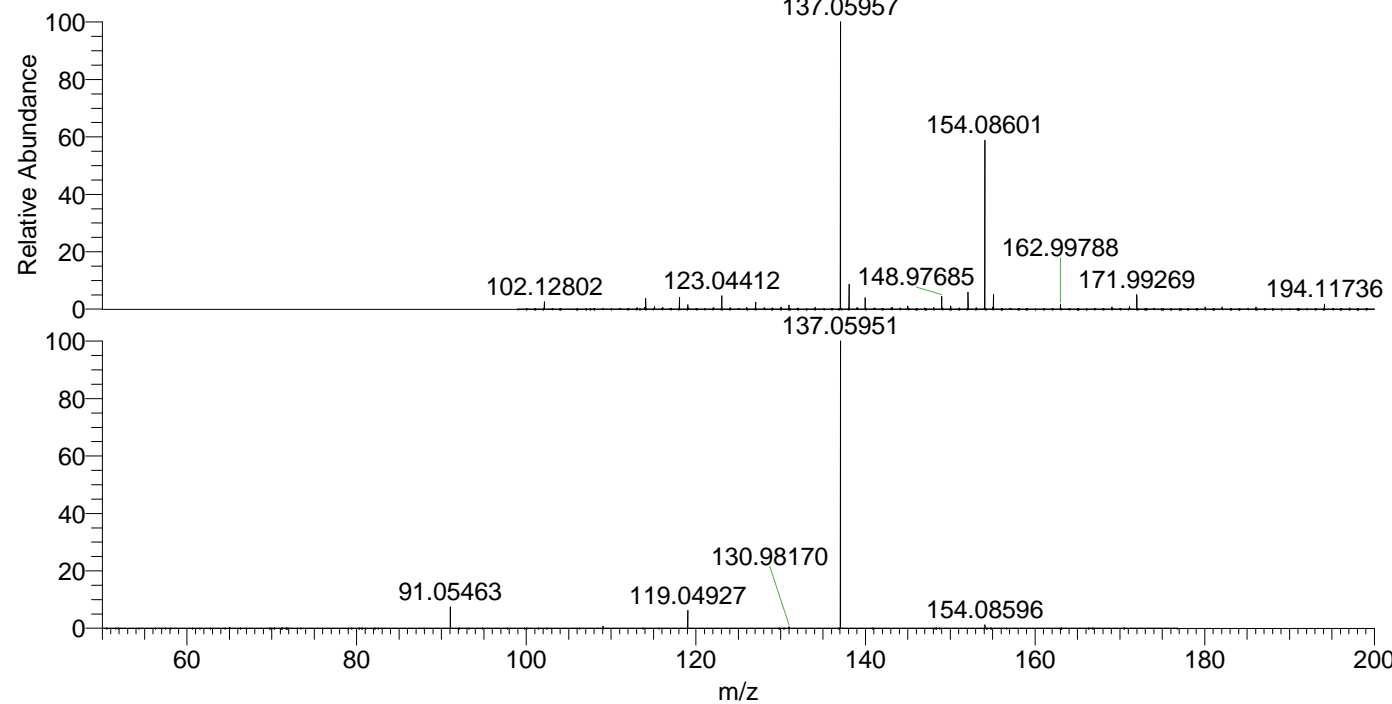
| m/z | Intensity | Relative |
|-----------|-----------|----------|
| 91.05463 | 190229.7 | 7.33 |
| 109.06489 | 18295.9 | 0.70 |
| 119.04927 | 158640.8 | 6.11 |
| 130.98170 | 13901.6 | 0.54 |
| 137.05951 | 2595898.8 | 100.00 |
| 154.08596 | 29838.2 | 1.15 |



NL: 5.65E6
 Base Peak m/z=
 154.08526-154.08834 F: FTMS + p
 ESI Full ms [100.0000-1500.0000]
 MS Dopamine



NL: 3.84E6
 Base Peak m/z=
 57.66667-1500.00000 F: FTMS + p
 ESI d Full ms2 154.0860@hcd35.00
 [50.0000-175.0000] MS Dopamine



NL: 9.57E6
 Dopamine#796 RT: 2.04
 AV: 1 T: FTMS + p ESI Full
 ms [100.0000-1500.0000]

NL: 2.57E6
 Dopamine#767-820 RT:
 1.97-2.09 AV: 9 F: FTMS
 + p ESI d Full ms2
 154.0860@hcd35.00
 [50.0000-175.0000]