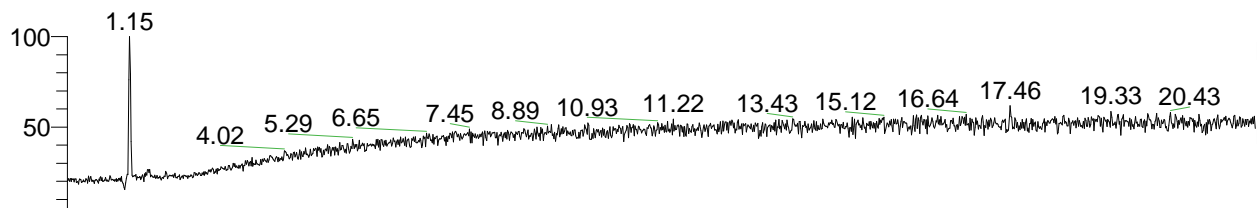


RT: 0.00 - 22.01



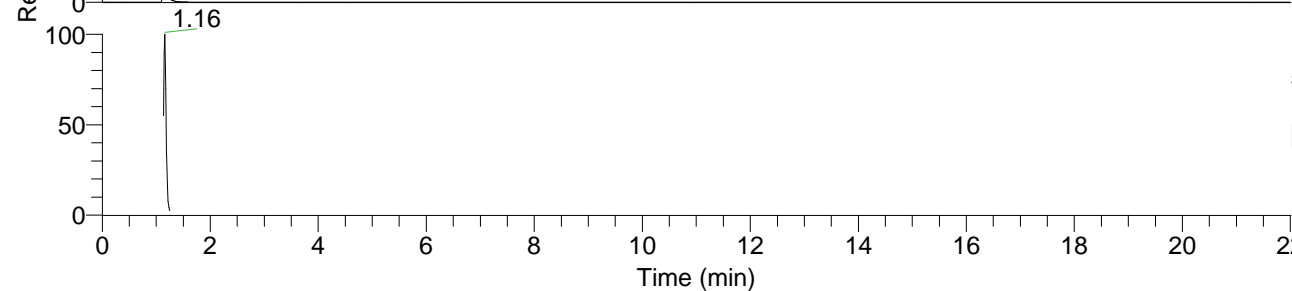
NL: 1.31E7
 Base Peak m/z=
 100.00000-1500.00000 F: FTMS + p
 ESI Full ms [100.0000-1500.0000]
 MS Glutamic_acid

Glutamic_acid#387-415 RT: 1.13-1.20 AV:
 F: FTMS + p ESI d Full ms2 148.0600 ...
 m/z= 50.00000-1000.00000

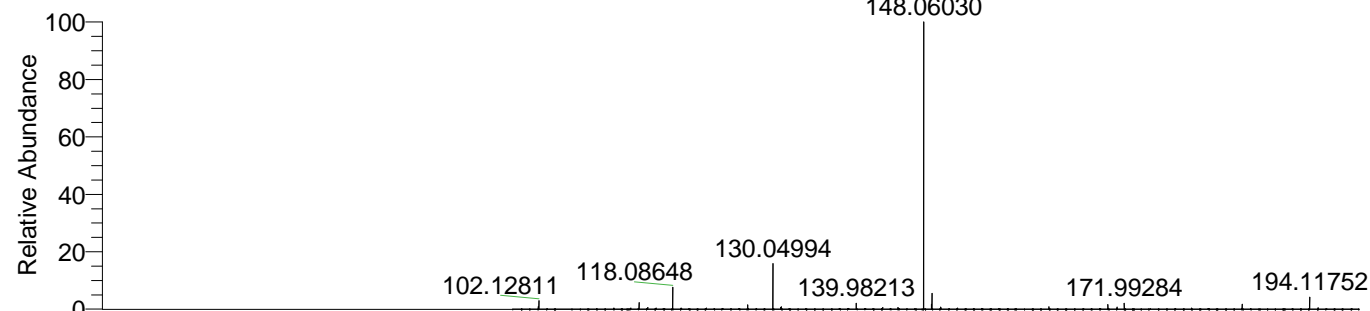
m/z	Intensity	Relative
56.05028	45748.7	1.42
84.04498	3219096.0	100.00
85.02888	53005.5	1.65
102.05527	1314139.4	40.82
130.04992	1230298.9	38.22
131.03390	20189.0	0.63
148.06021	397048.8	12.33



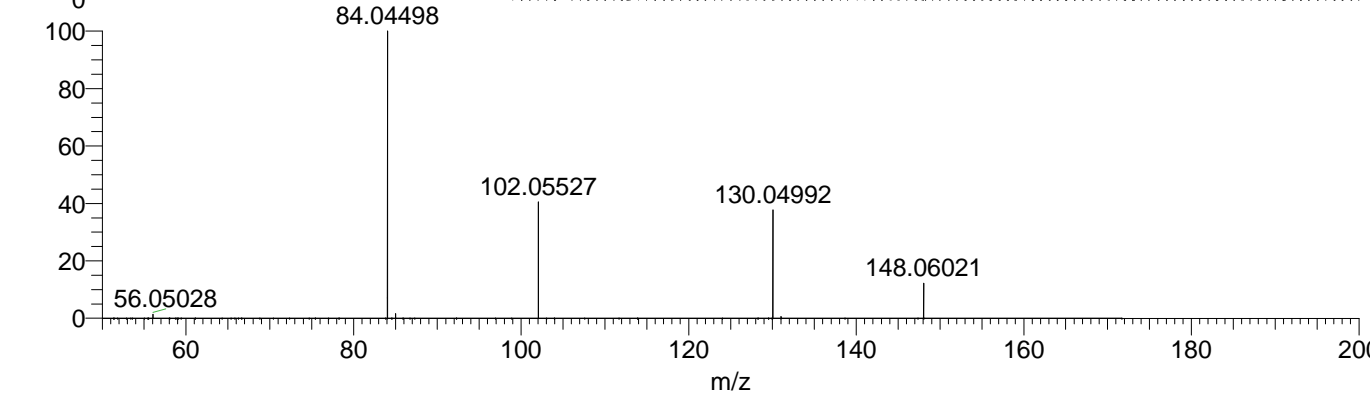
NL: 1.31E7
 Base Peak m/z=
 148.05950-148.06246 F: FTMS + p
 ESI Full ms [100.0000-1500.0000]
 MS Glutamic_acid



NL: 5.56E6
 Base Peak m/z=
 50.00000-1500.00000 F: FTMS + p
 ESI d Full ms2 148.0603@hcd35.00
 [50.0000-170.0000] MS Glutamic_acid



NL: 1.30E7
 Glutamic_acid#396 RT:
 1.15 AV: 1 T: FTMS + p ESI
 Full ms
 [100.0000-1500.0000]



NL: 3.21E6
 Glutamic_acid#382-419 RT:
 1.13-1.20 AV: 6 F: FTMS +
 p ESI d Full ms2
 148.0603@hcd35.00
 [50.0000-170.0000]