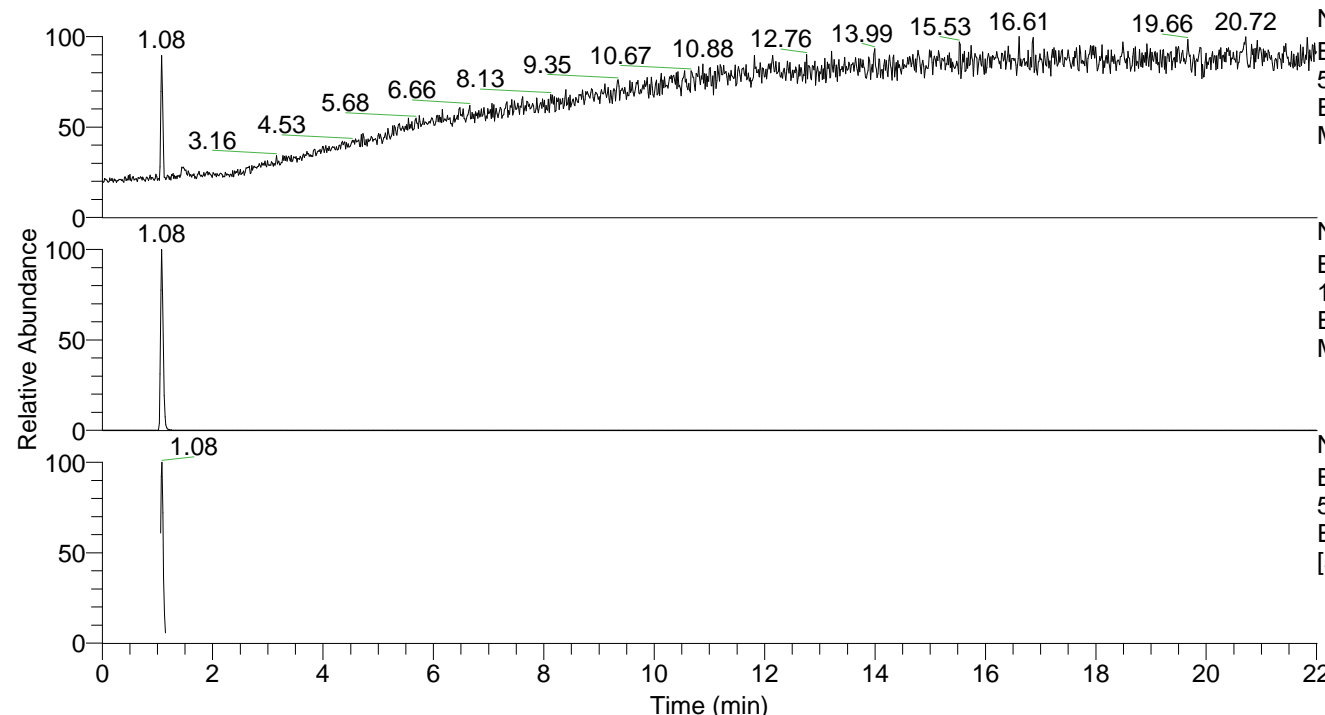


RT: 0.00 - 22.01



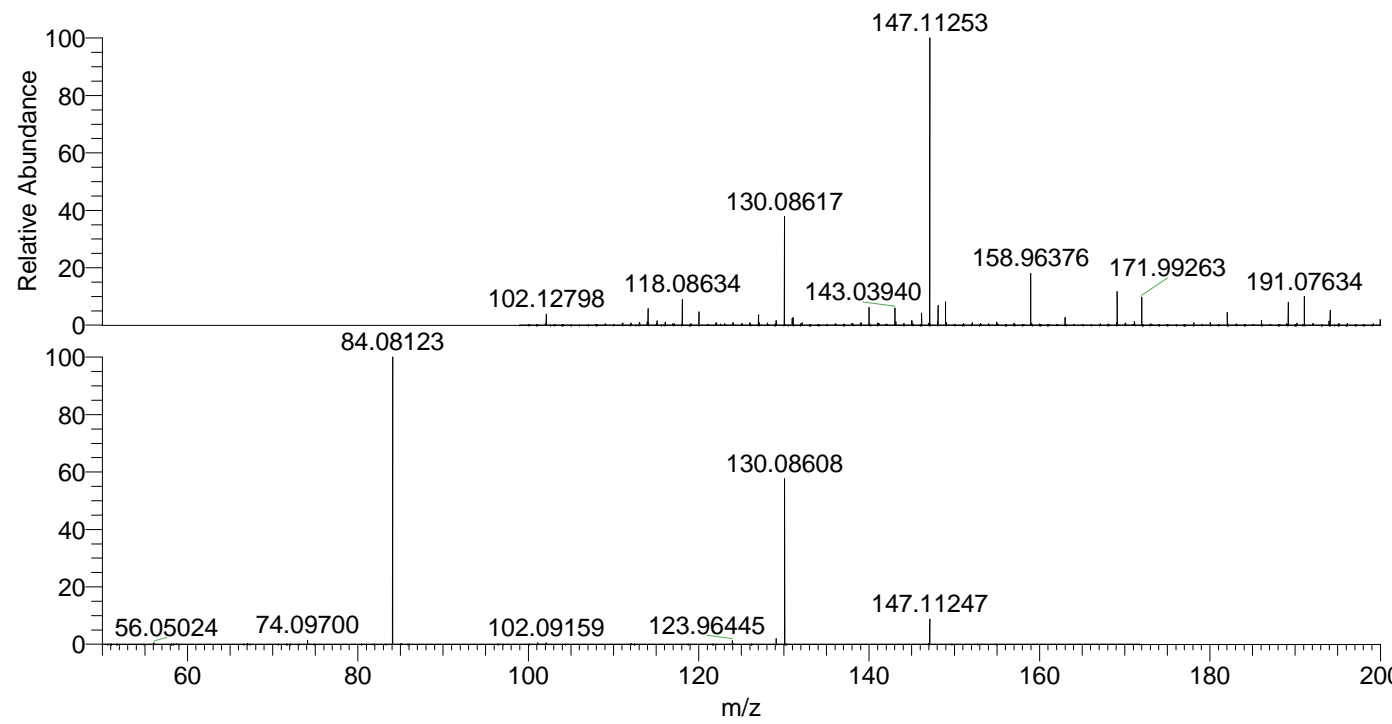
NL: 7.17E6
 Base Peak m/z=
 50.00000-1500.00000 F: FTMS + p
 ESI Full ms [100.0000-1500.0000]
 MS Lysine

NL: 6.43E6
 Base Peak m/z=
 147.11188-147.11482 F: FTMS + p
 ESI Full ms [100.0000-1500.0000]
 MS Lysine

NL: 2.79E6
 Base Peak m/z=
 57.66667-1500.00000 F: FTMS + p
 ESI d Full ms2 147.1125@hcd35.00
 [50.0000-170.0000] MS Lysine

Lysine#411-439 RT: 1.06-1.13 AV: 6
 F: FTMS + p ESI d Full ms2 147.1100 ...
 m/z= 50.00000-1500.00000

m/z	Intensity	Relative
56.05024	8449.5	0.51
74.09700	23484.5	1.43
84.08123	1641173.1	100.00
102.09159	8342.5	0.51
123.96445	20749.6	1.26
129.10200	32566.5	1.98
130.08608	946406.4	57.67
147.11247	141813.0	8.64



NL: 6.09E6
 Lysine#420 RT: 1.08 AV:
 1 T: FTMS + p ESI Full ms
 [100.0000-1500.0000]

NL: 1.62E6
 Lysine#408-441 RT:
 1.06-1.13 AV: 6 F: FTMS
 + p ESI d Full ms2
 147.1125@hcd35.00
 [50.0000-170.0000]

