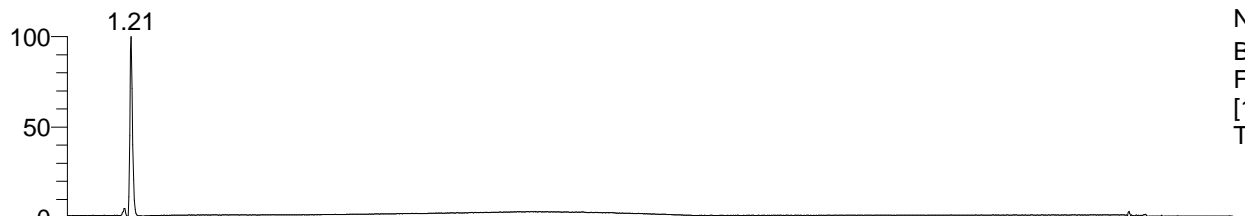


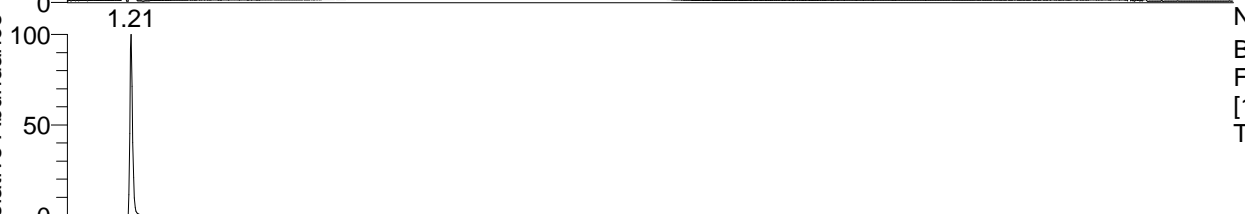
RT: 0.00 - 22.01



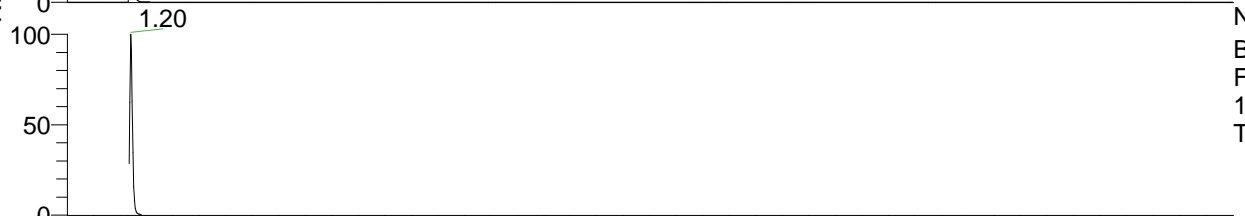
NL: 5.46E7  
 Base Peak m/z= 50.00000-1500.00000  
 F: FTMS + p ESI Full ms  
 [100.00-1500.00] MS  
 Trigonelline\_170816174654

Trigonelline\_170816174654#466-494 RT:  
 F: FTMS + p ESI d Full ms2 138.05@hc ...  
 m/z= 50.00000-1000.00000

m/z	Intensity	Relative
94.06567	633747.9	2.48
110.06046	503837.1	1.97
138.05498	25546204.0	100.00



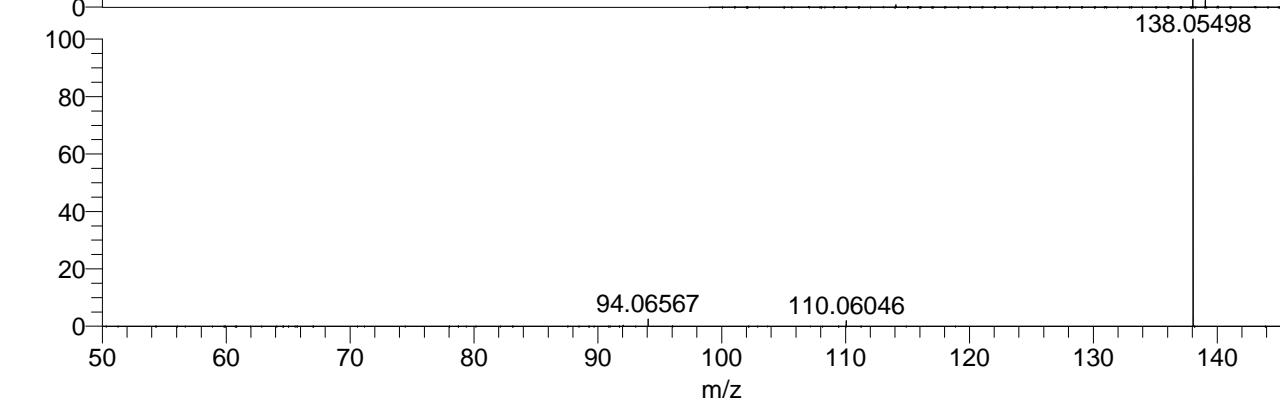
NL: 5.46E7  
 Base Peak m/z= 138.05481-138.05619  
 F: FTMS + p ESI Full ms  
 [100.00-1500.00] MS  
 Trigonelline\_170816174654



NL: 4.28E7  
 Base Peak m/z= 50.00000-1500.00000  
 F: FTMS + p ESI d Full ms2  
 138.05@hcd35.00 [50.00-160.00] MS  
 Trigonelline\_170816174654



NL: 5.40E7  
 Trigonelline\_170816174654#4  
 81 RT: 1.21 AV: 1 T: FTMS  
 + p ESI Full lock ms  
 [100.00-1500.00]



NL: 2.55E7  
 Trigonelline\_170816174654#4  
 64-499 RT: 1.17-1.24 AV: 6  
 F: FTMS + p ESI d Full ms2  
 138.05@hcd35.00  
 [50.00-160.00]