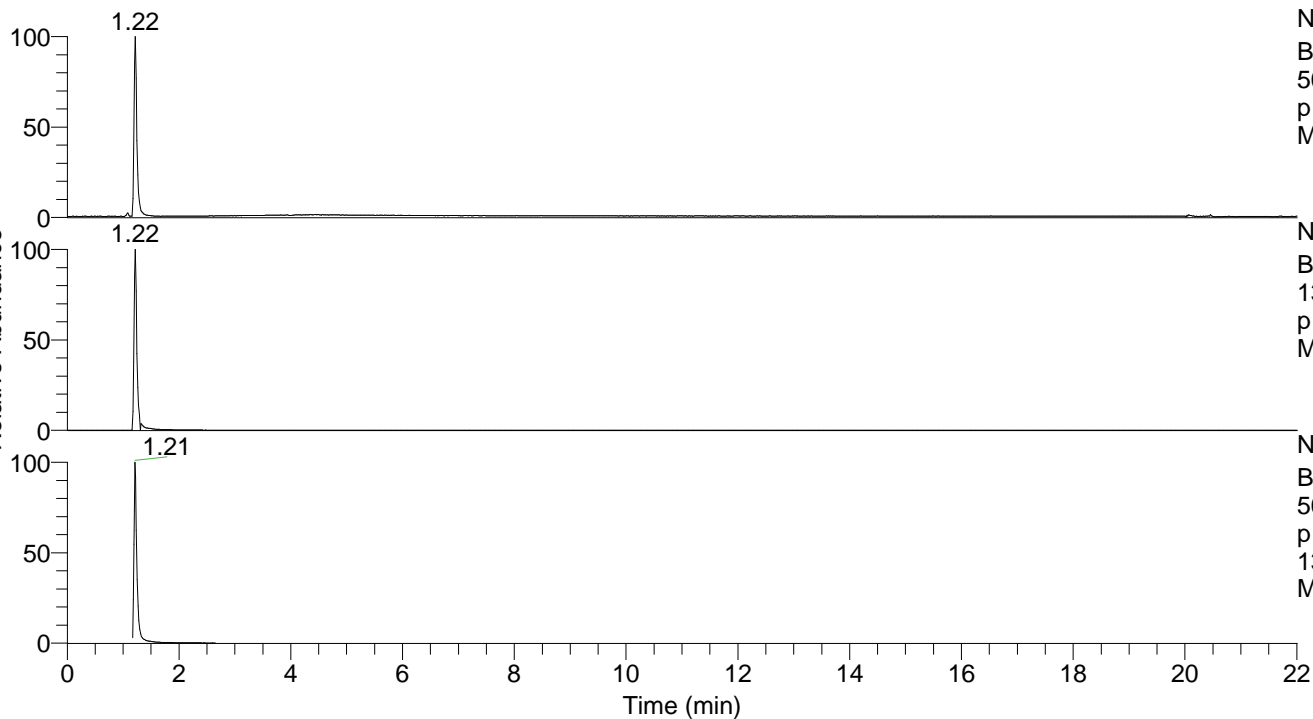


RT: 0.00 - 22.00



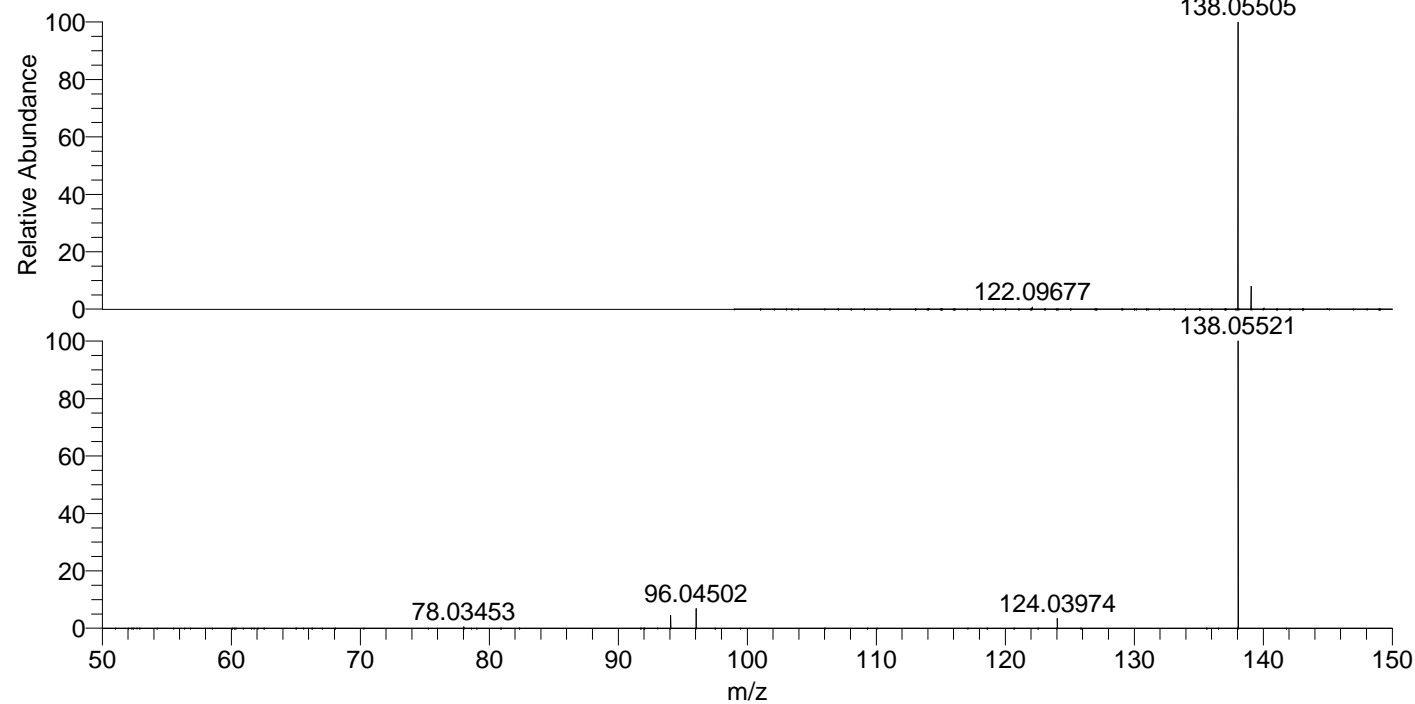
NL: 1.04E8
 Base Peak m/z=
 50.00000-1500.00000 F: FTMS +
 p ESI Full ms [100.00-1500.00]
 MS Homarine

NL: 1.04E8
 Base Peak m/z=
 138.05481-138.05619 F: FTMS +
 p ESI Full ms [100.00-1500.00]
 MS Homarine

NL: 7.66E7
 Base Peak m/z=
 50.00000-1500.00000 F: FTMS +
 p ESI d Full ms2
 138.05@hcd35.00 [50.00-160.00]
 MS Homarine

Homarine#466-512 RT: 1.17-1.28 AV: 9
 F: FTMS + p ESI d Full ms2 138.05@hc ...
 m/z= 50.00000-1000.00000

m/z	Intensity	Relative
78.03453	170175.8	0.53
96.06580	1458547.0	4.56
96.04502	2174250.0	6.80
124.03974	1067966.5	3.34
138.05522	31976448.0	100.00



NL: 9.84E7
 Homarine#487 RT: 1.22
 AV: 1 T: FTMS + p ESI
 Full ms [100.00-1500.00]

NL: 3.53E7
 Homarine#467-512 RT:
 1.18-1.28 AV: 8 F: FTMS
 + p ESI d Full ms2
 138.05@hcd35.00
 [50.00-160.00]