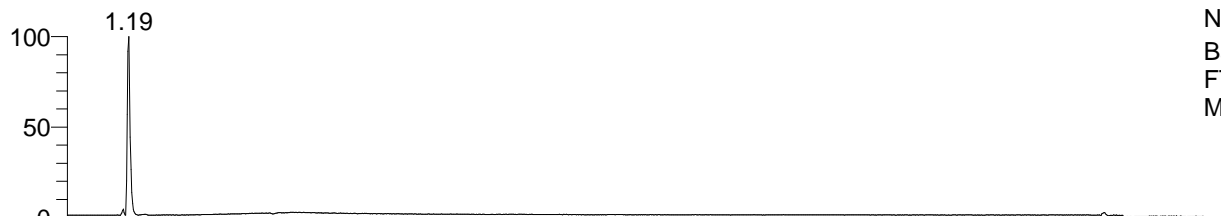


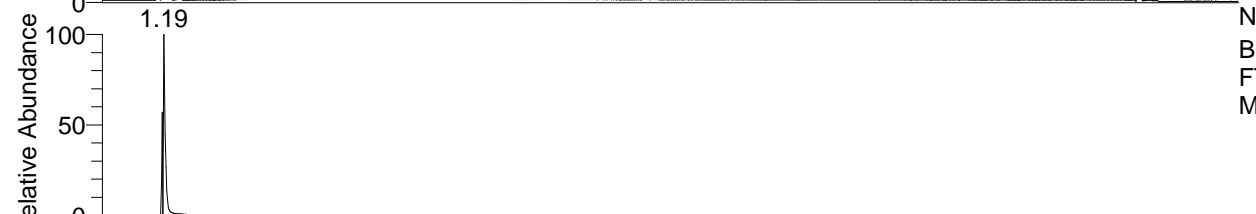
RT: 0.00 - 22.00



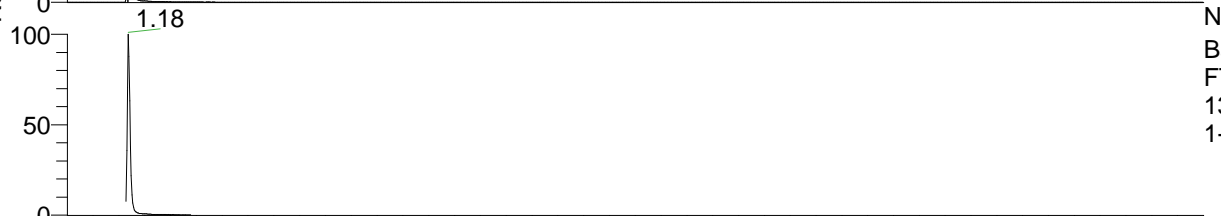
NL: 6.00E7
 Base Peak m/z= 50.00000-1500.00000 F:
 FTMS + p ESI Full ms [100.00-1500.00]
 MS 1-Methyl-4-pyridinium-carboxylate

1-Methyl-4-pyridinium-carboxylate#
 F: FTMS + p ESI d Full ms2 138.05@hc ...
 m/z= 50.00000-1000.00000

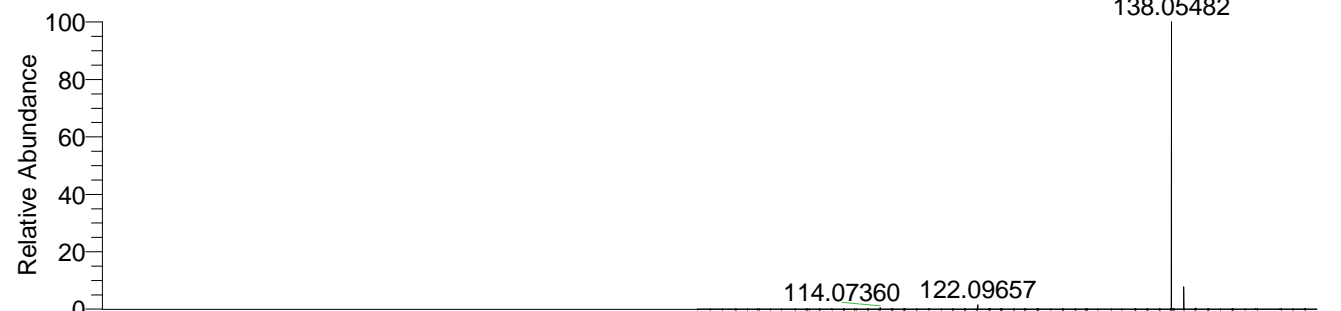
m/z	Intensity	Relative
94.06567	808892.9	3.53
110.06031	530162.0	2.32
138.05495	22891446.0	100.00



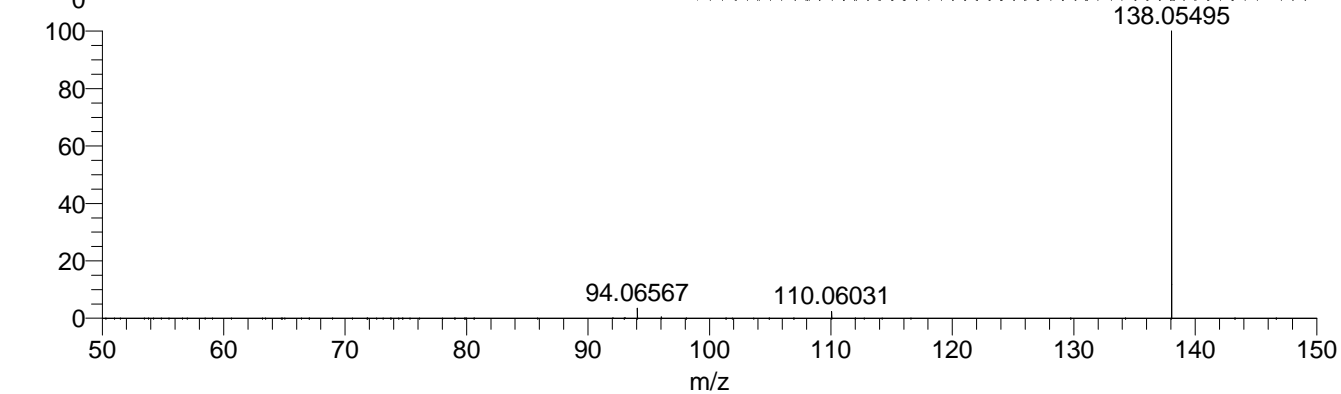
NL: 6.00E7
 Base Peak m/z= 138.05481-138.05619 F:
 FTMS + p ESI Full ms [100.00-1500.00]
 MS 1-Methyl-4-pyridinium-carboxylate



NL: 4.63E7
 Base Peak m/z= 50.00000-1500.00000 F:
 FTMS + p ESI d Full ms2
 138.05@hcd35.00 [50.00-160.00] MS
 1-Methyl-4-pyridinium-carboxylate



NL: 5.73E7
 1-Methyl-4-pyridinium-carboxylate#475 RT: 1.19 AV:
 1 T: FTMS + p ESI Full ms
 [100.00-1500.00]



NL: 2.20E7
 1-Methyl-4-pyridinium-carboxylate#454-499 RT:
 1.14-1.24 AV: 8 F: FTMS + p
 ESI d Full ms2
 138.05@hcd35.00
 [50.00-160.00]