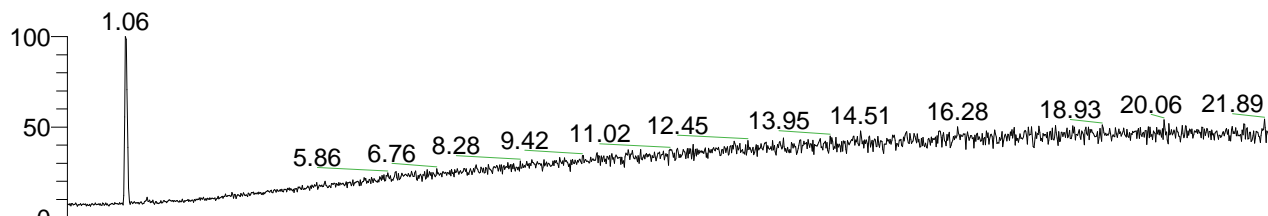


RT: 0.00 - 22.01



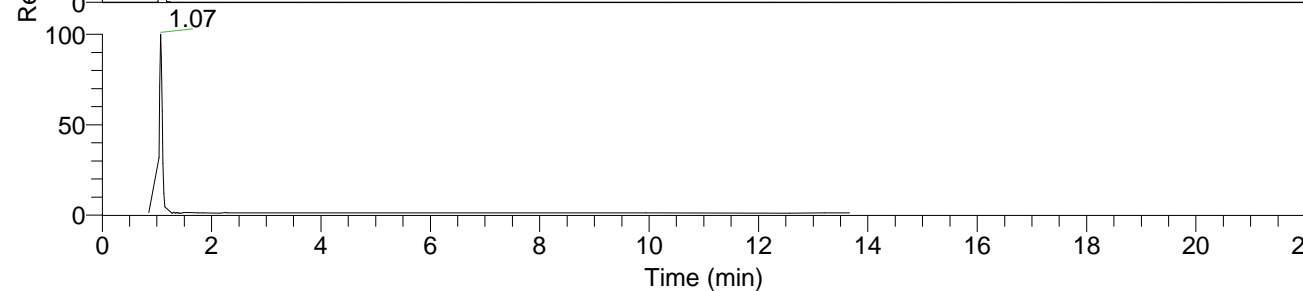
NL: 1.13E7  
 Base Peak m/z=  
 50.00000-1500.00000 F: FTMS + p  
 ESI Full ms [100.0000-1500.0000]  
 MS Ornithine

Ornithine#417-445 RT: 1.04-1.11 AV: 6  
 F: FTMS + p ESI d Full ms2 133.0900 ...  
 m/z= 50.00000-1500.00000

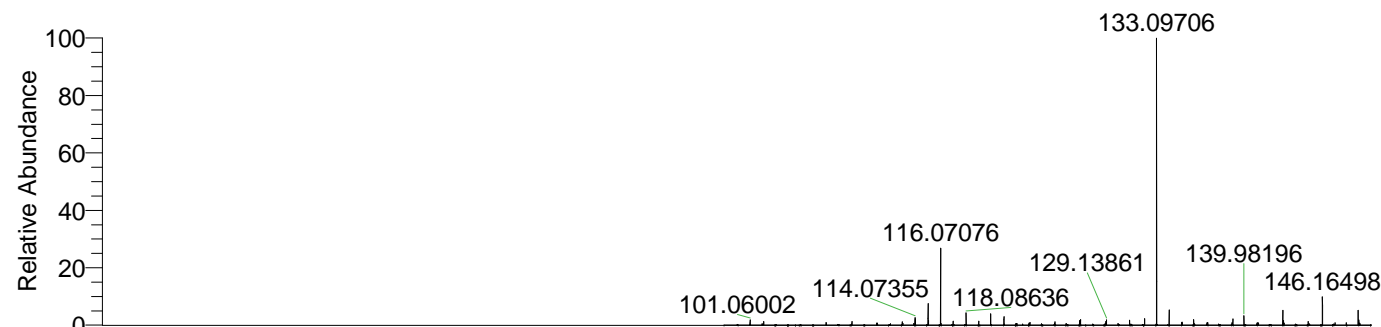
m/z	Intensity	Relative
70.06578	2964740.5	100.00
73.06539	64783.5	2.19
115.08670	339708.1	11.46
116.07067	2196224.3	74.08
133.06477	15765.6	0.53
133.09684	140944.3	4.75



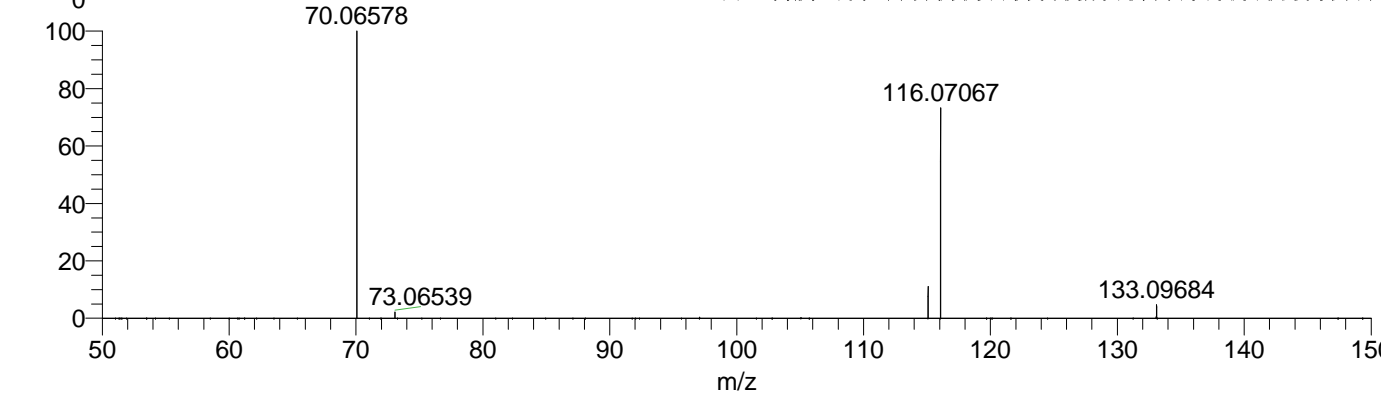
NL: 1.13E7  
 Base Peak m/z=  
 133.09637-133.09903 F: FTMS + p  
 ESI Full ms [100.0000-1500.0000]  
 MS Ornithine



NL: 4.84E6  
 Base Peak m/z=  
 57.66667-1500.00000 F: FTMS + p  
 ESI d Full ms2 133.0858@hcd35.00  
 [50.0000-155.0000] MS Ornithine



NL: 1.13E7  
 Ornithine#426 RT: 1.06  
 AV: 1 T: FTMS + p ESI Full  
 ms [100.0000-1500.0000]



NL: 2.96E6  
 Ornithine#416-445 RT:  
 1.04-1.11 AV: 6 F: FTMS +  
 p ESI d Full ms2  
 133.0858@hcd35.00  
 [50.0000-155.0000]