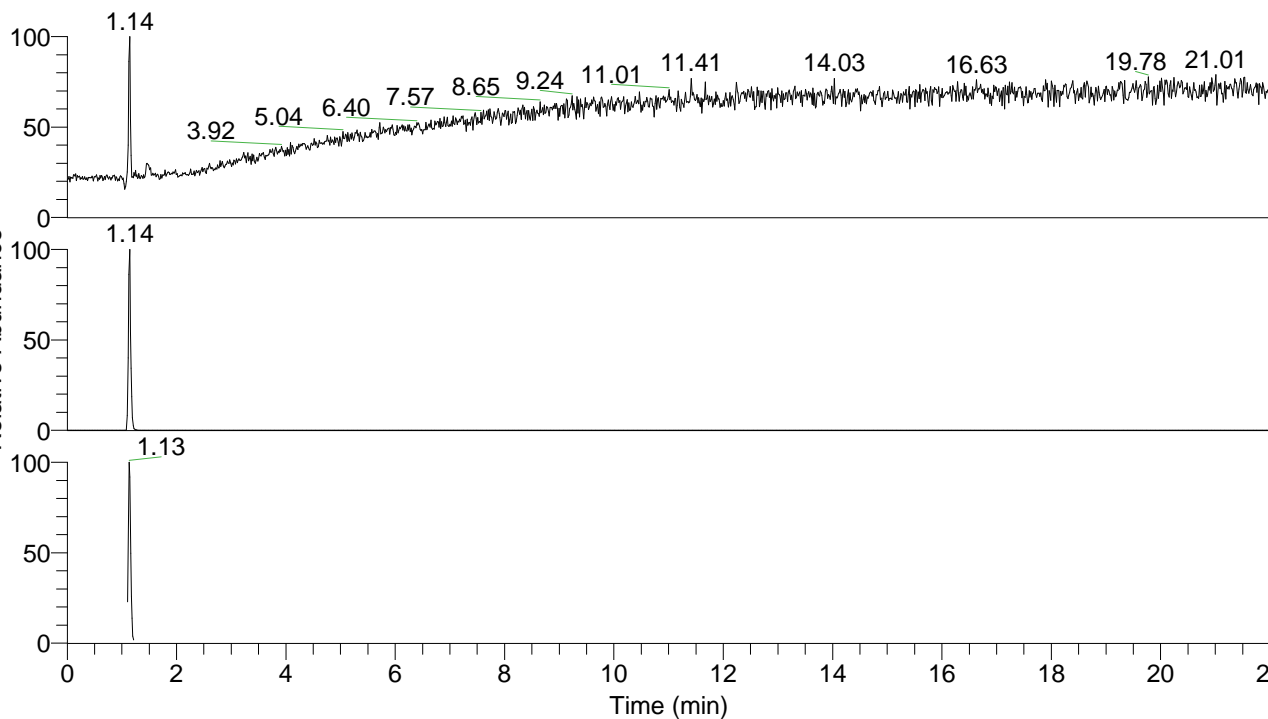


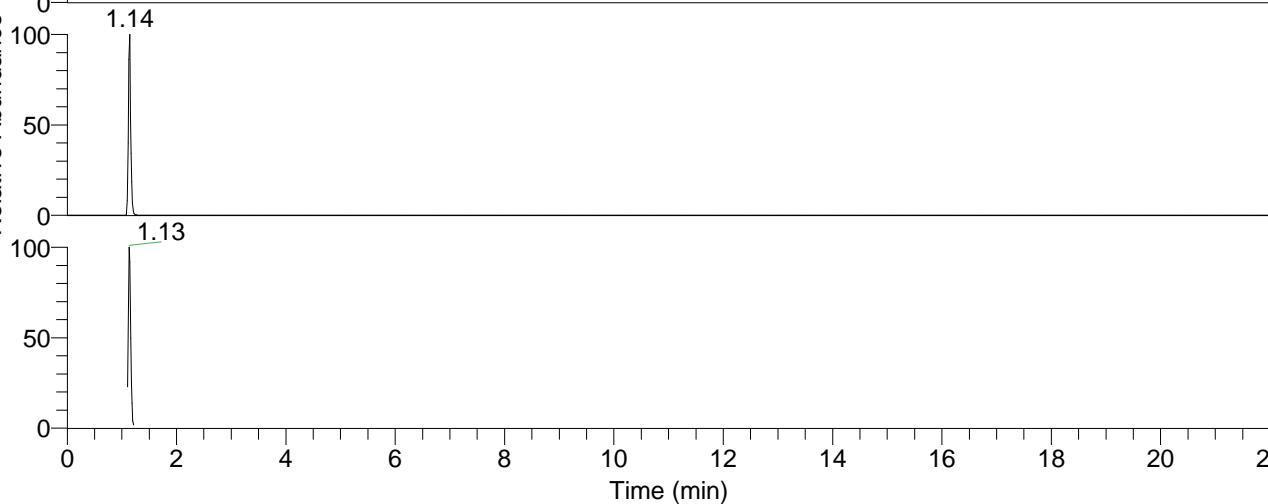
RT: 0.00 - 22.01



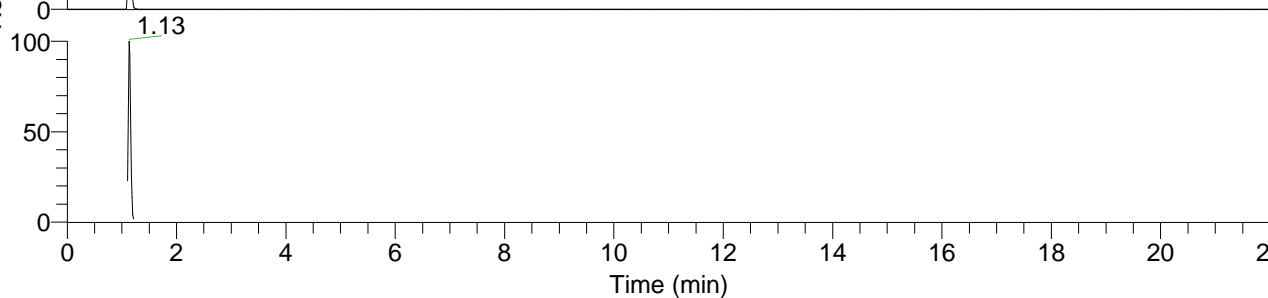
NL: 9.72E6  
 Base Peak m/z=  
 50.00000-1500.00000 F: FTMS + p  
 ESI Full ms [100.0000-1500.0000]  
 MS Threonine

Threonine#423-459 RT: 1.11-1.20 AV: 8  
 F: FTMS + p ESI d Full ms2 120.0700 ...  
 m/z= 50.00000-1500.00000

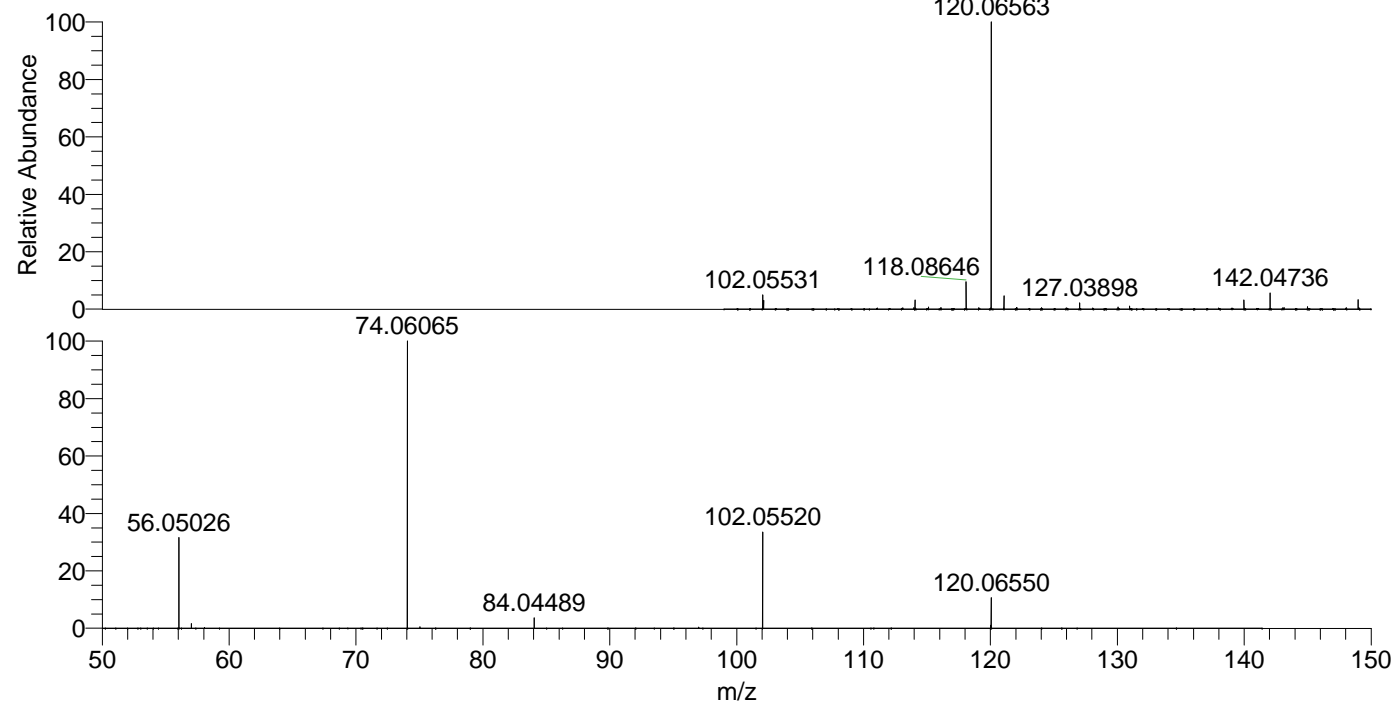
m/z	Intensity	Relative
56.05026	623892.2	31.57
57.03427	33257.9	1.68
74.06065	1976145.5	100.00
84.04489	72541.3	3.67
102.05520	659745.7	33.39
120.02357	21838.0	1.11
120.06550	213261.6	10.79



NL: 9.72E6  
 Base Peak m/z=  
 120.06487-120.06727 F: FTMS + p  
 ESI Full ms [100.0000-1500.0000]  
 MS Threonine



NL: 4.35E6  
 Base Peak m/z=  
 57.66667-1500.00000 F: FTMS + p  
 ESI d Full ms2 120.0656@hcd35.00  
 [50.0000-140.0000] MS Threonine



NL: 9.40E6  
 Threonine#438 RT: 1.14  
 AV: 1 T: FTMS + p ESI Full  
 ms [100.0000-1500.0000]

NL: 2.22E6  
 Threonine#421-455 RT:  
 1.11-1.18 AV: 7 F: FTMS +  
 p ESI d Full ms2  
 120.0656@hcd35.00  
 [50.0000-140.0000]