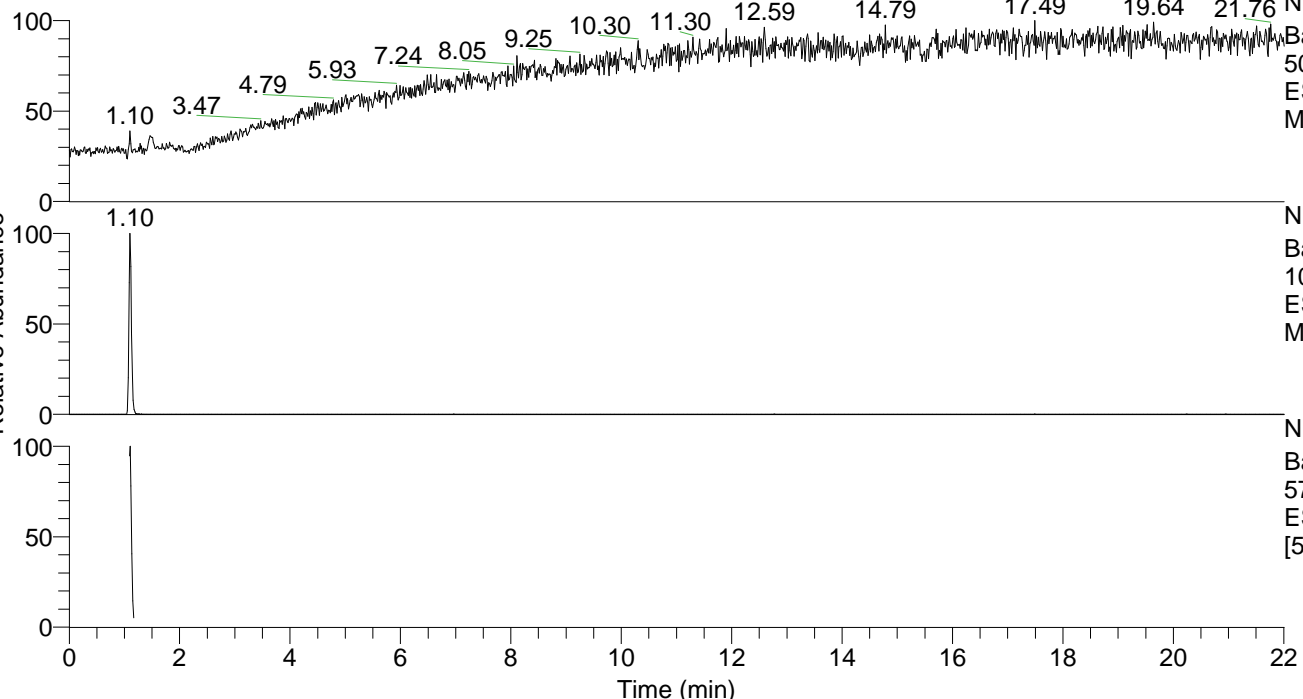


RT: 0.00 - 22.00



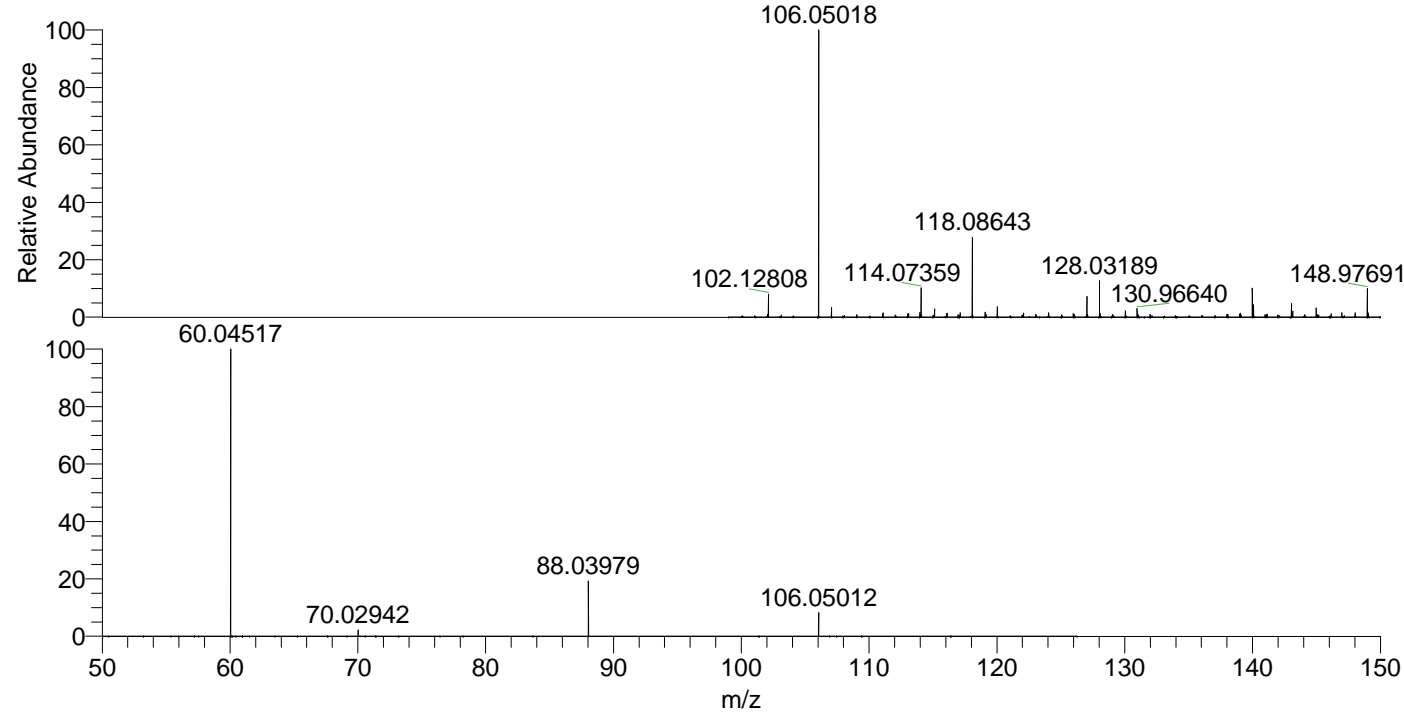
NL: 7.86E6
 Base Peak m/z=
 50.00000-1500.00000 F: FTMS + p
 ESI Full ms [100.0000-1500.0000]
 MS Serine

Serine#421-444 RT: 1.09-1.15 AV: 5
 F: FTMS + p ESI d Full ms2 106.0500 ...
 m/z= 50.00000-1500.00000

m/z	Intensity	Relative
60.04517	1369689.8	100.00
70.02942	30905.8	2.26
88.03979	263857.5	19.26
106.05012	114377.9	8.35

NL: 3.07E6
 Base Peak m/z=
 106.04936-106.05148 F: FTMS + p
 ESI Full ms [100.0000-1500.0000]
 MS Serine

NL: 2.10E6
 Base Peak m/z=
 57.66667-1500.00000 F: FTMS + p
 ESI d Full ms2 106.0502@hcd35.00
 [50.0000-125.0000] MS Serine



NL: 3.05E6
 Serine#424 RT: 1.10 AV:
 1 T: FTMS + p ESI Full ms
 [100.0000-1500.0000]

NL: 1.37E6
 Serine#416-448 RT:
 1.09-1.15 AV: 5 F: FTMS
 + p ESI d Full ms2
 106.0502@hcd35.00
 [50.0000-125.0000]