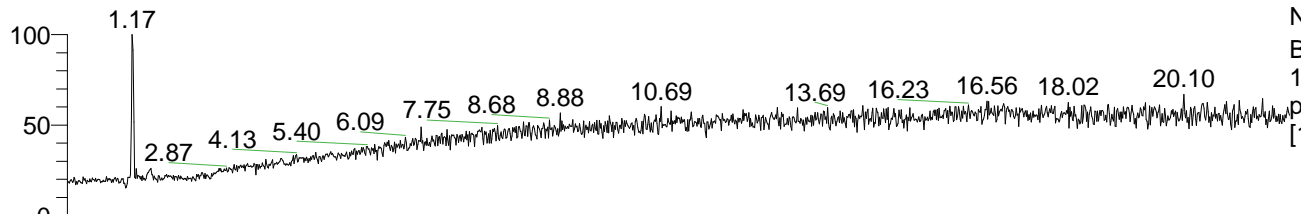


RT: 0.00 - 22.00



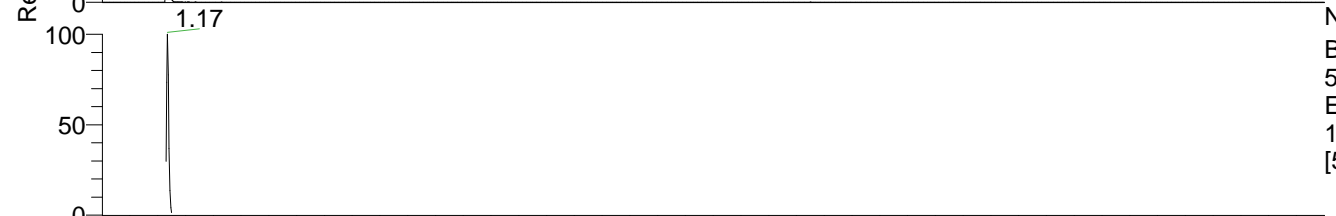
NL: 1.19E7
 Base Peak m/z=
 100.00000-1500.00000 F: FTMS +
 p ESI Full ms
 [100.0000-1500.0000] MS GABA

GABA#459-500 RT: 1.15-1.25 AV: 8
 F: FTMS + p ESI d Full ms2 104.1100 ...
 m/z= 50.00000-1000.00000

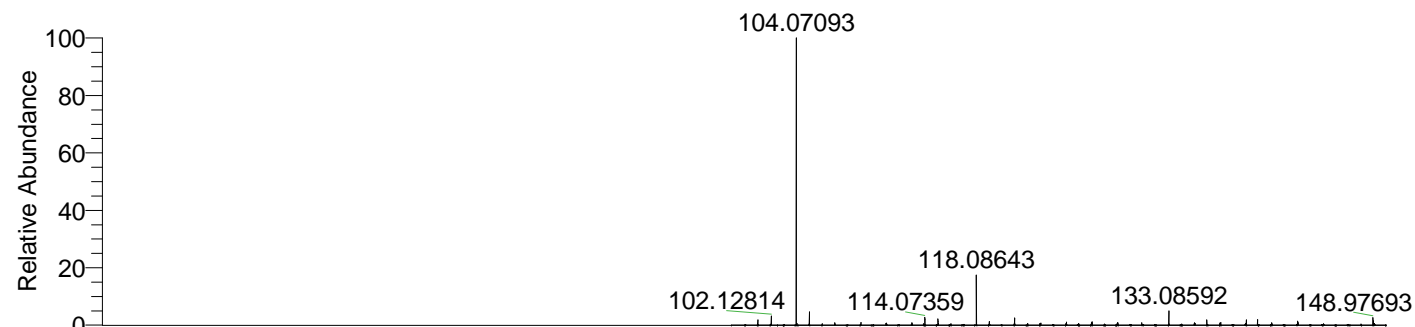
m/z	Intensity	Relative
68.05015	71665.4	1.85
69.03415	687307.3	17.74
86.06057	1029553.4	26.57
87.04455	3875291.0	100.00
104.07086	327541.5	8.45
104.10720	66110.3	1.71



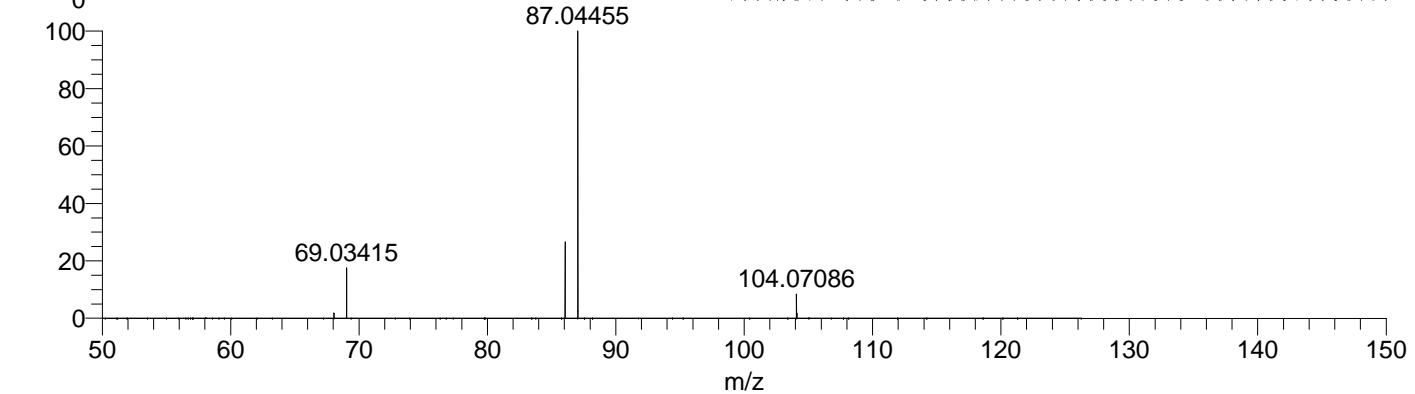
NL: 1.19E7
 Base Peak m/z=
 104.07011-104.07219 F: FTMS + p
 ESI Full ms [100.0000-1500.0000]
 MS GABA



NL: 9.65E6
 Base Peak m/z=
 50.00000-1500.00000 F: FTMS + p
 ESI d Full ms2
 104.1072@hcd35.00
 [50.0000-125.0000] MS GABA



NL: 1.16E7
 GABA#468 RT: 1.17 AV:
 1 T: FTMS + p ESI Full
 ms [100.0000-1500.0000]



NL: 3.87E6
 GABA#411-554 RT:
 1.15-1.25 AV: 8 F: FTMS
 + p ESI d Full ms2
 104.1072@hcd35.00
 [50.0000-125.0000]